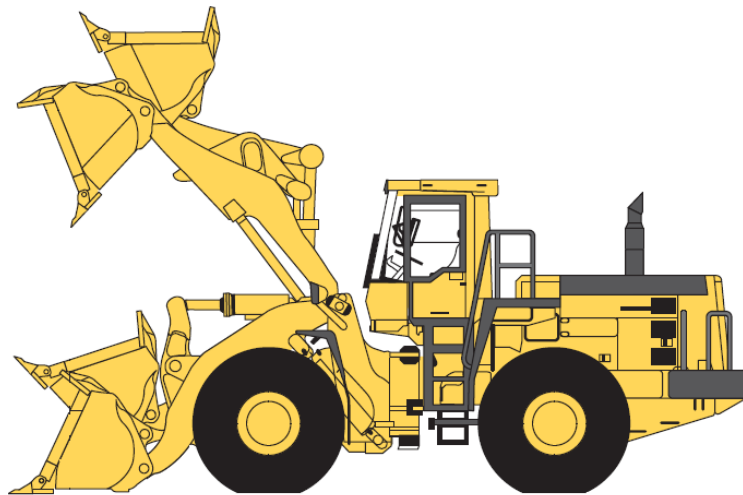




XS SYSTEMS

SERIES RECOMMENDATION CHART FOR LOADERS



November 1, 2004

XS SYSTEMS

SERIES RECOMMENDATION CHART FOR LOADERS

This recommendation chart is based on your machine model and the application in which the machine is used.

Machines are sorted by manufacturer and break out force.

Find your appropriate machine model and match that with the application in which the machine will be used. Select the application based on the majority of the machine work. Always select the more severe application if the percentage of work approaches 50%.

You will find the Definitions for Standard / Heavy Duty Application and Extreme Service Application listed below. This should help you select the appropriate system for your machine.

As an example:

If you have a Komatsu WA600-3 and 50% of the work is in loose, well-shot material, but 50% of the work is in heavy unshot rock, then you should use the Extreme Service recommendation for this machine, the 40 series.

Be realistic when selecting the appropriate series for your machine. Selecting a series that is too small for the machine and application will very likely result in product failure, which will reduce your production and increase your costs. Remember, Hensley guarantees our products to perform, but we will not guarantee our products when abused!

Note: These recommendations are a general guideline. There are many machine modifications and set ups that increase the break out force of the machine. If your machine is specifically designed for more severe work, always go with the Extreme Duty recommendation.

DEFINITIONS

Standard / Heavy Duty - The load on the machine ranges from very little to moderate with some limited, "high load" use. Materials range from light and loose, well-shot, fracturable, to some medium, even heavy shot materials that break up into manageable sizes when excavated. Large slabs of rock do not fit in this category.

Extreme Service – The load on the machine is high, nearing the maximum capabilities of the machine. Materials are heavy un-shot rock or slabs that require the full force of the machine to break out.

XS SYSTEMS SERIES RECOMMENDATION CHART FOR LOADERS

| MANUFACTURER | MODEL | BREAKOUT FORCE IN LBS. | RECOMMENDED SERIES SIZE BASED ON | |
|--------------|-------|------------------------------|-------------------------------------|--------------------|
| | | | APPLICATION | |
| | | | STANDARD / HEAVY DUTY | EXTREME SERVICE |
| AHLMANN | AL6B | 7,920 | 04 Series | 05 Series |
| AHLMANN | AL7C | 8,360 | 04 Series | 05 Series |
| AHLMANN | AL7D | 8,360 | 04 Series | 05 Series |
| AHLMANN | AL8 | 8,800 | 05 Series | 05 Series |
| AHLMANN | AL8C | 8,800 | 05 Series | 05 Series |
| AHLMANN | AS7CS | 11,880 | 05 Series | 05 Series |
| AHLMANN | AS10 | 13,640 | 05 Series | 05 Series |
| AHLMANN | AS12 | 22,000 | 10 Series | 15 Series |
| AHLMANN | AS15 | 22,440 | 10 Series | 15 Series |
| AHLMANN | AS18 | 22,440 | 10 Series | 15 Series |
| ATLAS | 32E | 5,254 | 04 Series | 04 Series |
| ATLAS | 32C | 5,280 | 04 Series | 04 Series |
| ATLAS | AR41B | 5,720 | 04 Series | 04 Series |
| ATLAS | 42C | 6,380 | 04 Series | 04 Series |
| ATLAS | 45 | 7,190 | 04 Series | 05 Series |
| ATLAS | AR45B | 7,260 | 04 Series | 05 Series |
| ATLAS | 46C | 7,700 | 04 Series | 05 Series |
| ATLAS | AR52C | 8,140 | 04 Series | 05 Series |
| ATLAS | 52D | 8,580 | 04 Series | 05 Series |
| ATLAS | 46E | 9,020 | 05 Series | 05 Series |
| ATLAS | 55 | 10,010 | 05 Series | 05 Series |
| ATLAS | 72E | 10,560 | 05 Series | 05 Series |
| ATLAS | 52E | 10,780 | 05 Series | 05 Series |
| ATLAS | AR62C | 11,000 | 05 Series | 05 Series |
| ATLAS | 65 | 11,156 | 05 Series | 05 Series |
| ATLAS | 62D | 11,440 | 05 Series | 05 Series |
| ATLAS | 62E | 11,440 | 05 Series | 05 Series |
| ATLAS | 72C | 11,440 | 05 Series | 05 Series |
| ATLAS | 70 | 12,756 | 05 Series | 05 Series |
| ATLAS | 80 | 13,173 | 05 Series | 05 Series |
| ATLAS | 82E | 14,702 | 05 Series | 05 Series |
| ATLAS | 86E | 14,702 | 05 Series | 05 Series |
| BENATI | 5.08 | 14,080 | 05 Series | 05 Series |
| BENATI | 5.10 | 16,060 | 05 Series | 10 Series |
| BENATI | 9SB | 16,280 | 05 Series | 10 Series |
| BENATI | 5.15B | 18,480 | 05 Series | 10 Series |
| BENATI | 12SB | 21,340 | 10 Series | 15 Series |
| BENATI | 5.20B | 23,540 | 10 Series | 15 Series |

XS SYSTEMS SERIES RECOMMENDATION CHART FOR LOADERS

| MANUFACTURER | MODEL | BREAKOUT FORCE IN LBS. | RECOMMENDED SERIES SIZE BASED ON | |
|--------------|----------|------------------------------|-------------------------------------|--------------------|
| | | | APPLICATION | |
| | | | STANDARD / HEAVY DUTY | EXTREME SERVICE |
| BENATI | 16SB | 25,960 | 15 Series | 15 Series |
| BENATI | 19SB | 30,140 | 15 Series | 20 Series |
| BENATI | 5.25 | 31,460 | 15 Series | 20 Series |
| BENATI | 5.30 | 36,080 | 15 Series | 20 Series |
| BENATI | 22SB | 38,060 | 20 Series | 20 Series |
| BENATI | 25SB | 50,160 | 20 Series | 25 Series |
| BENATI | 35SB | 64,240 | 25 Series | 30 Series |
| BENATI | 40SB | 87,120 | 30 Series | 50 Series |
| BENFRA | 1.05 | 6,160 | 04 Series | 04 Series |
| BENFRA | 1.15 | 8,800 | 05 Series | 05 Series |
| BENFRA | 215B | 11,000 | 05 Series | 05 Series |
| BENFRA | 315B | 14,300 | 05 Series | 05 Series |
| BENFRA | 415B | 17,600 | 05 Series | 10 Series |
| BENFRA | 515B | 18,480 | 05 Series | 10 Series |
| BRAY | RS4500C | 11,660 | 05 Series | 05 Series |
| BRAY | PS7500C | 19,580 | 10 Series | 10 Series |
| BRAY | PS10000B | 22,880 | 10 Series | 15 Series |
| BRAY | PS10500C | 27,280 | 15 Series | 15 Series |
| Buhler | B56 | 9,200 | 05 Series | 05 Series |
| CASE | 1825 | 1,760 | 04 Series | 04 Series |
| CASE | 1840 | 3,080 | 04 Series | 04 Series |
| CASE | 1845C | 4,620 | 04 Series | 04 Series |
| CASE | W4 | 5,060 | 04 Series | 04 Series |
| CASE | 21B | 7,700 | 04 Series | 05 Series |
| CASE | W11 | 10,815 | 05 Series | 05 Series |
| CASE | 121B | 11,000 | 05 Series | 05 Series |
| CASE | 221B | 11,000 | 05 Series | 05 Series |
| CASE | 21D | 11,238 | 05 Series | 05 Series |
| CASE | 321B | 12,980 | 05 Series | 05 Series |
| CASE | W14 | 14,080 | 05 Series | 05 Series |
| CASE | 421B | 15,180 | 05 Series | 10 Series |
| CASE | 321D | 15,955 | 05 Series | 10 Series |
| CASE | W15 | 16,720 | 05 Series | 10 Series |
| CASE | 521D | 20,202 | 10 Series | 10 Series |
| CASE | W24B | 21,340 | 10 Series | 15 Series |
| CASE | W18 | 22,440 | 10 Series | 15 Series |
| CASE | W20 | 22,440 | 10 Series | 15 Series |
| CASE | W20C | 22,440 | 10 Series | 15 Series |

XS SYSTEMS SERIES RECOMMENDATION CHART FOR LOADERS

| MANUFACTURER | MODEL | BREAKOUT FORCE IN LBS. | RECOMMENDED SERIES SIZE BASED ON | |
|--------------|----------------|------------------------------|-------------------------------------|--------------------|
| | | | APPLICATION | |
| | | | STANDARD / HEAVY DUTY | EXTREME SERVICE |
| CASE | 621 | 24,640 | 10 Series | 15 Series |
| CASE | W30 | 25,960 | 15 Series | 15 Series |
| CASE | 621C | 26,033 | 15 Series | 15 Series |
| CASE | 621D | 26,055 | 15 Series | 15 Series |
| CASE | 721C | 28,834 | 15 Series | 15 Series |
| CASE | 721 | 30,140 | 15 Series | 20 Series |
| CASE | W36 | 30,140 | 15 Series | 20 Series |
| CASE | 821C | 30,476 | 15 Series | 20 Series |
| CASE | 821 | 35,200 | 15 Series | 20 Series |
| CASE | 921C | 45,398 | 20 Series | 25 Series |
| CASE | 921 | 45,980 | 20 Series | 25 Series |
| CATERPILLAR | 902 | 8,200 | 04 Series | 05 Series |
| CATERPILLAR | 906 | 10,200 | 05 Series | 05 Series |
| CATERPILLAR | 910.0 | 10,340 | 05 Series | 05 Series |
| CATERPILLAR | 908 | 13,050 | 05 Series | 05 Series |
| CATERPILLAR | 914G | 13,136 | 05 Series | 05 Series |
| CATERPILLAR | IT12F | 14,520 | 05 Series | 05 Series |
| CATERPILLAR | IT12B | 15,180 | 05 Series | 10 Series |
| CATERPILLAR | 910F | 16,060 | 05 Series | 10 Series |
| CATERPILLAR | 910E | 16,500 | 05 Series | 10 Series |
| CATERPILLAR | IT14F | 16,720 | 05 Series | 10 Series |
| CATERPILLAR | IT14B | 16,940 | 05 Series | 10 Series |
| CATERPILLAR | 920.0 | 17,380 | 05 Series | 10 Series |
| CATERPILLAR | 930.0 | 18,700 | 05 Series | 10 Series |
| CATERPILLAR | IT18F | 20,460 | 10 Series | 15 Series |
| CATERPILLAR | IT24F | 20,460 | 10 Series | 15 Series |
| CATERPILLAR | 918F | 21,560 | 10 Series | 15 Series |
| CATERPILLAR | 924Gz | 21,727 | 10 Series | 15 Series |
| CATERPILLAR | 928F | 21,780 | 10 Series | 15 Series |
| CATERPILLAR | 916.0 | 22,000 | 10 Series | 15 Series |
| CATERPILLAR | 924F | 22,000 | 10 Series | 15 Series |
| CATERPILLAR | 950 | 22,660 | 10 Series | 15 Series |
| CATERPILLAR | 926.0 | 24,200 | 10 Series | 15 Series |
| CATERPILLAR | 926E | 24,200 | 10 Series | 15 Series |
| CATERPILLAR | 938G Series II | 24,594 | 10 Series | 15 Series |
| CATERPILLAR | IT18B | 24,860 | 10 Series | 15 Series |
| CATERPILLAR | IT28B | 25,080 | 10 Series | 15 Series |
| CATERPILLAR | 924G | 25,195 | 10 Series | 15 Series |

XS SYSTEMS SERIES RECOMMENDATION CHART FOR LOADERS

| MANUFACTURER | MODEL | BREAKOUT FORCE IN LBS. | RECOMMENDED SERIES SIZE BASED ON | |
|--------------|--------------------|------------------------------|-------------------------------------|--------------------|
| | | | APPLICATION | |
| | | | STANDARD / HEAVY DUTY | EXTREME SERVICE |
| CATERPILLAR | IT28G | 25,340 | 15 Series | 15 Series |
| CATERPILLAR | 938G High Lift | 25,830 | 15 Series | 15 Series |
| CATERPILLAR | 928G | 25,849 | 15 Series | 15 Series |
| CATERPILLAR | IT38G Series II | 26,730 | 15 Series | 15 Series |
| CATERPILLAR | 938G | 27,060 | 15 Series | 15 Series |
| CATERPILLAR | 966D | 27,940 | 15 Series | 15 Series |
| CATERPILLAR | 966C | 28,600 | 15 Series | 15 Series |
| CATERPILLAR | 960F | 29,260 | 15 Series | 15 Series |
| CATERPILLAR | 936F | 29,920 | 15 Series | 20 Series |
| CATERPILLAR | 936E | 30,140 | 15 Series | 20 Series |
| CATERPILLAR | 936 | 30,580 | 15 Series | 20 Series |
| CATERPILLAR | 962G Series II | 31,024 | 15 Series | 20 Series |
| CATERPILLAR | 962G | 32,980 | 15 Series | 20 Series |
| CATERPILLAR | IT62G II | 33,497 | 15 Series | 20 Series |
| CATERPILLAR | 970F | 34,540 | 15 Series | 20 Series |
| CATERPILLAR | 950G | 34,640 | 15 Series | 20 Series |
| CATERPILLAR | 950G Series II | 34,666 | 15 Series | 20 Series |
| CATERPILLAR | 950E | 35,200 | 15 Series | 20 Series |
| CATERPILLAR | 980B | 35,640 | 15 Series | 20 Series |
| CATERPILLAR | 980G Waste Handler | 36,095 | 15 Series | 20 Series |
| CATERPILLAR | 950B | 36,740 | 15 Series | 20 Series |
| CATERPILLAR | 950F | 37,400 | 20 Series | 20 Series |
| CATERPILLAR | 966G | 44,120 | 20 Series | 25 Series |
| CATERPILLAR | 966G Series II | 45,184 | 20 Series | 25 Series |
| CATERPILLAR | 980G Series II | 47,277 | 20 Series | 25 Series |
| CATERPILLAR | 966E | 48,180 | 20 Series | 25 Series |
| CATERPILLAR | 972G Series II | 48,554 | 20 Series | 25 Series |
| CATERPILLAR | 980G | 49,255 | 20 Series | 25 Series |
| CATERPILLAR | 972G | 51,210 | 20 Series | 25 Series |
| CATERPILLAR | 966F | 52,360 | 20 Series | 25 Series |
| CATERPILLAR | 980G-II | 52,391 | 20 Series | 25 Series |
| CATERPILLAR | 980F | 55,660 | 25 Series | 25 Series |
| CATERPILLAR | 980G-II High Lift | 56,386 | 25 Series | 25 Series |
| CATERPILLAR | 980C | 58,300 | 25 Series | 30 Series |
| CATERPILLAR | 988F | 80,520 | 30 Series | 40 Series |
| CATERPILLAR | 992B | 80,740 | 30 Series | 40 Series |
| CATERPILLAR | 988B | 103,400 | 40 Series | 50 Series |
| CATERPILLAR | 988G | 103,500 | 40 Series | 50 Series |

XS SYSTEMS SERIES RECOMMENDATION CHART FOR LOADERS

| MANUFACTURER | MODEL | BREAKOUT FORCE IN LBS. | RECOMMENDED SERIES SIZE BASED ON | |
|--------------|-------------------------|------------------------------|-------------------------------------|--------------------|
| | | | APPLICATION | |
| | | | STANDARD / HEAVY DUTY | EXTREME SERVICE |
| CATERPILLAR | 990 Series II High Lift | 120,498 | 50 Series | 70 Series |
| CATERPILLAR | 990 | 128,920 | 50 Series | 85 Series |
| CATERPILLAR | 990 Series II | 131,194 | 70 Series | 85 Series |
| CATERPILLAR | 990-II High Lift | 138,773 | 70 Series | 85 Series |
| CATERPILLAR | 990-II | 138,883 | 70 Series | 85 Series |
| CATERPILLAR | 992G High Lift | 141,600 | 70 Series | 85 Series |
| CATERPILLAR | 992D | 144,760 | 70 Series | 85 Series |
| CATERPILLAR | 992G | 146,549 | 70 Series | 85 Series |
| CATERPILLAR | 992C | 148,720 | 70 Series | 85 Series |
| CATERPILLAR | 994D High Lift | 197,208 | 85 Series | 115 Series |
| CATERPILLAR | 994 | 209,440 | 115 Series | 145 Series |
| CATERPILLAR | 994D | 213,750 | 115 Series | 145 Series |
| CLARK | 35B | 11,000 | 05 Series | 05 Series |
| CLARK | 45C | 14,740 | 05 Series | 05 Series |
| CLARK | 55B | 18,040 | 05 Series | 10 Series |
| CLARK | 55C | 18,040 | 05 Series | 10 Series |
| CLARK | 75B | 18,700 | 05 Series | 10 Series |
| CLARK | 75C | 26,840 | 15 Series | 15 Series |
| CLARK | 125B | 29,920 | 15 Series | 20 Series |
| CLARK | 175B | 36,740 | 15 Series | 20 Series |
| CLARK | 125C | 40,480 | 20 Series | 20 Series |
| CLARK | 175C | 40,920 | 20 Series | 20 Series |
| CLARK | 275B | 51,700 | 20 Series | 25 Series |
| CLARK | 275C | 55,000 | 20 Series | 25 Series |
| CLARK | 475B | 102,740 | 40 Series | 50 Series |
| CLARK | 475C | 104,500 | 40 Series | 70 Series |
| CLARK | 320 | 107,800 | 40 Series | 70 Series |
| COYOTE | C18 | 1,170 | 04 Series | 04 Series |
| COYOTE | C170 | 3,300 | 04 Series | 04 Series |
| COYOTE | C285 | 3,750 | 04 Series | 04 Series |
| COYOTE | C265 | 3,754 | 04 Series | 04 Series |
| COYOTE | C5 | 5,450 | 04 Series | 04 Series |
| COYOTE | C7 | 6,613 | 04 Series | 04 Series |
| COYOTE | C8c | 7,190 | 04 Series | 05 Series |
| COYOTE | C9 | 9,325 | 05 Series | 05 Series |
| COYOTE | C15 | 10,050 | 05 Series | 05 Series |
| COYOTE | C14C | 10,100 | 05 Series | 05 Series |
| COYOTE | C10B | 10,207 | 05 Series | 05 Series |

XS SYSTEMS SERIES RECOMMENDATION CHART FOR LOADERS

| MANUFACTURER | MODEL | BREAKOUT FORCE IN LBS. | RECOMMENDED SERIES SIZE BASED ON | |
|--------------|--------------|------------------------------|-------------------------------------|--------------------|
| | | | APPLICATION | |
| | | | STANDARD / HEAVY DUTY | EXTREME SERVICE |
| COYOTE | C18B | 11,450 | 05 Series | 05 Series |
| COYOTE | C19 | 11,465 | 05 Series | 05 Series |
| COYOTE | C20 | 13,450 | 05 Series | 05 Series |
| COYOTE | C22 | 15,000 | 05 Series | 05 Series |
| DAEWOO | Mega 160 | 17,250 | 05 Series | 10 Series |
| DAEWOO | 160-III | 17,290 | 05 Series | 10 Series |
| DAEWOO | 200-III | 23,100 | 10 Series | 15 Series |
| DAEWOO | Mega 200-V | 23,150 | 10 Series | 15 Series |
| DAEWOO | Mega 250-V | 29,100 | 15 Series | 15 Series |
| DAEWOO | 250-III | 29,106 | 15 Series | 15 Series |
| DAEWOO | 300-III | 36,900 | 20 Series | 20 Series |
| DAEWOO | Mega 300-V | 40,790 | 20 Series | 20 Series |
| DAEWOO | MEGA 400 | 45,980 | 20 Series | 25 Series |
| DAEWOO | 400-III Plus | 48,180 | 20 Series | 25 Series |
| DAEWOO | Mega 400-V | 48,510 | 20 Series | 25 Series |
| DAEWOO | Mega 500-V | 59,525 | 25 Series | 30 Series |
| DART | 600E | 111,320 | 50 Series | 70 Series |
| DART | 600EC | 111,320 | 50 Series | 70 Series |
| DRESSER | 510B | 15,400 | 05 Series | 10 Series |
| DRESSER | 510C | 15,400 | 05 Series | 10 Series |
| DRESSER | 515B | 17,160 | 05 Series | 10 Series |
| DRESSER | 515C | 23,540 | 10 Series | 15 Series |
| DRESSER | 520B | 23,980 | 10 Series | 15 Series |
| DRESSER | 520C | 23,980 | 10 Series | 15 Series |
| DRESSER | 530C | 27,500 | 15 Series | 15 Series |
| DRESSER | 530A II | 30,140 | 15 Series | 20 Series |
| DRESSER | 530 | 30,800 | 15 Series | 20 Series |
| DRESSER | 540A II | 33,000 | 15 Series | 20 Series |
| DRESSER | 540C | 33,000 | 15 Series | 20 Series |
| DRESSER | 540 | 33,660 | 15 Series | 20 Series |
| DRESSER | 538 | 38,280 | 20 Series | 20 Series |
| DRESSER | 545 | 39,160 | 20 Series | 20 Series |
| DRESSER | 550 | 39,600 | 20 Series | 20 Series |
| DRESSER | 555 | 55,220 | 25 Series | 25 Series |
| DRESSER | 560B | 71,500 | 25 Series | 40 Series |
| DRESSER | 570 | 98,560 | 40 Series | 50 Series |
| DRESSER | 580 | 191,400 | 85 Series | 115 Series |
| DRESSER | 4000 | 215,600 | 115 Series | 145 Series |

XS SYSTEMS SERIES RECOMMENDATION CHART FOR LOADERS

| MANUFACTURER | MODEL | BREAKOUT FORCE IN LBS. | RECOMMENDED SERIES SIZE BASED ON | |
|--------------|-----------------|------------------------------|-------------------------------------|--------------------|
| | | | APPLICATION | |
| | | | STANDARD / HEAVY DUTY | EXTREME SERVICE |
| DRESSTA | 510C | 16,263 | 05 Series | 10 Series |
| DRESSTA | 515E | 20,027 | 10 Series | 10 Series |
| DRESSTA | 515EH | 21,615 | 10 Series | 15 Series |
| DRESSTA | 515CH | 23,536 | 10 Series | 15 Series |
| DRESSTA | 515EH High Lift | 24,850 | 10 Series | 15 Series |
| DRESSTA | 520EH High Lift | 26,980 | 15 Series | 15 Series |
| DRESSTA | 520E | 29,671 | 15 Series | 20 Series |
| DRESSTA | 520CH | 29,983 | 15 Series | 20 Series |
| DRESSTA | 520EH | 29,983 | 15 Series | 20 Series |
| DRESSTA | 530E | 39,632 | 20 Series | 20 Series |
| DRESSTA | 555B | 60,010 | 25 Series | 30 Series |
| DRESSTA | 555B High Lift | 63,090 | 25 Series | 30 Series |
| DRESSTA | 560C | 66,230 | 25 Series | 30 Series |
| DRESSTA | 560C High Lift | 69,580 | 25 Series | 30 Series |
| FAI | 320B | 2,420 | 04 Series | 04 Series |
| FAI | 330B | 2,420 | 04 Series | 04 Series |
| FAI | 333 | 2,640 | 04 Series | 04 Series |
| FAI | 338 | 3,520 | 04 Series | 04 Series |
| FAI | 380 | 5,500 | 04 Series | 04 Series |
| FAI | 555 | 11,440 | 05 Series | 05 Series |
| FAI | 556 | 11,440 | 05 Series | 05 Series |
| FAI | 585 | 13,640 | 05 Series | 05 Series |
| FAI | 575 | 14,960 | 05 Series | 05 Series |
| FAI | 590 Turbo | 14,960 | 05 Series | 05 Series |
| FAI | 595 Turbo | 15,620 | 05 Series | 10 Series |
| FAUN | F1110C | 18,040 | 05 Series | 10 Series |
| FAUN | F1110 | 19,140 | 10 Series | 10 Series |
| FAUN | F1310 | 23,760 | 10 Series | 15 Series |
| FAUN | F1400C | 25,300 | 15 Series | 15 Series |
| FAUN | F1410 | 26,840 | 15 Series | 15 Series |
| FAUN | F2010 | 32,120 | 15 Series | 20 Series |
| FAUN | F2000C | 33,000 | 15 Series | 20 Series |
| FAUN | F1810 | 35,200 | 15 Series | 20 Series |
| FAUN | F3500 | 48,620 | 20 Series | 25 Series |
| FAUN | F3510 | 57,860 | 25 Series | 30 Series |
| FAUN | F5000 | 60,280 | 25 Series | 30 Series |
| FDI | D1000S | 7,920 | 04 Series | 05 Series |
| Fiatallis | FR120.2 | 21,693 | 10 Series | 15 Series |

XS SYSTEMS SERIES RECOMMENDATION CHART FOR LOADERS

| MANUFACTURER | MODEL | BREAKOUT FORCE IN LBS. | RECOMMENDED SERIES SIZE BASED ON | |
|--------------|-------------|------------------------------|-------------------------------------|--------------------|
| | | | APPLICATION | |
| | | | STANDARD / HEAVY DUTY | EXTREME SERVICE |
| Fiatallis | FR140.2 | 27,606 | 15 Series | 15 Series |
| Fiatallis | FR180.2 | 34,729 | 15 Series | 20 Series |
| FIAT-HITACHI | FR7B | 14,740 | 05 Series | 05 Series |
| FIAT-HITACHI | FR7C | 14,960 | 05 Series | 05 Series |
| FIAT-HITACHI | 345B | 17,380 | 05 Series | 10 Series |
| FIAT-HITACHI | FR9 | 17,600 | 05 Series | 10 Series |
| FIAT-HITACHI | FR90 | 18,040 | 05 Series | 10 Series |
| FIAT-HITACHI | FR9C | 18,700 | 05 Series | 10 Series |
| FIAT-HITACHI | FR90PL | 19,580 | 10 Series | 10 Series |
| FIAT-HITACHI | FR9B | 19,580 | 10 Series | 10 Series |
| FIAT-HITACHI | FR9B PL | 19,800 | 10 Series | 10 Series |
| FIAT-HITACHI | FR11 | 21,120 | 10 Series | 15 Series |
| FIAT-HITACHI | FR10B | 23,320 | 10 Series | 15 Series |
| FIAT-HITACHI | FR12 | 23,540 | 10 Series | 15 Series |
| FIAT-HITACHI | FR10C | 23,760 | 10 Series | 15 Series |
| FIAT-HITACHI | FR130.2 | 24,860 | 10 Series | 15 Series |
| FIAT-HITACHI | FR12B Turbo | 26,180 | 15 Series | 15 Series |
| FIAT-HITACHI | FR10E | 26,400 | 15 Series | 15 Series |
| FIAT-HITACHI | FR130 | 26,840 | 15 Series | 15 Series |
| FIAT-HITACHI | FR15 | 29,260 | 15 Series | 15 Series |
| FIAT-HITACHI | FR15B | 32,120 | 15 Series | 20 Series |
| FIAT-HITACHI | FR160.2 | 34,540 | 15 Series | 20 Series |
| FIAT-HITACHI | FR160 | 38,060 | 20 Series | 20 Series |
| FIAT-HITACHI | FR20 | 44,000 | 20 Series | 20 Series |
| FIAT-HITACHI | FR20B | 44,000 | 20 Series | 20 Series |
| FIAT-HITACHI | FR30 | 44,000 | 20 Series | 20 Series |
| FIAT-HITACHI | 945B | 45,100 | 20 Series | 25 Series |
| FIAT-HITACHI | FR220.2 | 47,520 | 20 Series | 25 Series |
| FIAT-HITACHI | FR220 | 49,500 | 20 Series | 25 Series |
| FIAT-HITACHI | FR35 | 60,060 | 25 Series | 30 Series |
| FORD | 555D | 11,660 | 05 Series | 05 Series |
| FORD | 655D | 11,660 | 05 Series | 05 Series |
| FURUKAWA | FL70A | 2,860 | 04 Series | 04 Series |
| FURUKAWA | FL35 | 5,280 | 04 Series | 04 Series |
| FURUKAWA | FL302-2 | 5,620 | 04 Series | 04 Series |
| FURUKAWA | FL304A-2 | 6,720 | 04 Series | 04 Series |
| FURUKAWA | FL50 | 7,260 | 04 Series | 05 Series |
| FURUKAWA | FL303-2 | 7,270 | 04 Series | 05 Series |

XS SYSTEMS SERIES RECOMMENDATION CHART FOR LOADERS

| MANUFACTURER | MODEL | BREAKOUT FORCE IN LBS. | RECOMMENDED SERIES SIZE BASED ON | |
|---------------|---------|------------------------------|-------------------------------------|--------------------|
| | | | APPLICATION | |
| | | | STANDARD / HEAVY DUTY | EXTREME SERVICE |
| FURUKAWA | FL90-1 | 9,020 | 05 Series | 05 Series |
| FURUKAWA | FL305-1 | 9,150 | 05 Series | 05 Series |
| FURUKAWA | FL90 | 9,240 | 05 Series | 05 Series |
| FURUKAWA | 305 | 10,120 | 05 Series | 05 Series |
| FURUKAWA | FL120A | 12,760 | 05 Series | 05 Series |
| FURUKAWA | 310 | 15,180 | 05 Series | 10 Series |
| FURUKAWA | FL150 | 18,040 | 05 Series | 10 Series |
| FURUKAWA | FL170A | 20,020 | 10 Series | 10 Series |
| FURUKAWA | 315 | 21,120 | 10 Series | 15 Series |
| FURUKAWA | FL150-1 | 21,120 | 10 Series | 15 Series |
| FURUKAWA | FL200-1 | 26,400 | 15 Series | 15 Series |
| FURUKAWA | FL230 | 27,720 | 15 Series | 15 Series |
| FURUKAWA | FL230-1 | 27,720 | 15 Series | 15 Series |
| FURUKAWA | 335 | 29,040 | 15 Series | 15 Series |
| FURUKAWA | 345 | 33,440 | 15 Series | 20 Series |
| FURUKAWA | FL270-1 | 35,860 | 15 Series | 20 Series |
| FURUKAWA | FL330-I | 36,740 | 15 Series | 20 Series |
| FURUKAWA | FL320A | 37,400 | 20 Series | 20 Series |
| FURUKAWA | FL330 | 41,360 | 20 Series | 20 Series |
| FURUKAWA | 355 | 42,460 | 20 Series | 20 Series |
| FURUKAWA | 365 | 46,200 | 20 Series | 25 Series |
| FURUKAWA | FL460 | 56,320 | 25 Series | 25 Series |
| GEHL | KL415 | 7,920 | 04 Series | 05 Series |
| GEHL | KL608 | 10,780 | 05 Series | 05 Series |
| Gehl Avantage | AL-20DX | 1,079 | 04 Series | 04 Series |
| HANOMAG | 5C | 5,720 | 04 Series | 04 Series |
| HANOMAG | 6D | 5,720 | 04 Series | 04 Series |
| HANOMAG | 10E | 5,940 | 04 Series | 04 Series |
| HANOMAG | 10F | 7,260 | 04 Series | 05 Series |
| HANOMAG | 15F | 9,900 | 05 Series | 05 Series |
| HANOMAG | 22C | 11,660 | 05 Series | 05 Series |
| HANOMAG | 20E | 12,980 | 05 Series | 05 Series |
| HANOMAG | 22D | 14,300 | 05 Series | 05 Series |
| HANOMAG | 20F | 15,400 | 05 Series | 10 Series |
| HANOMAG | 33C | 15,840 | 05 Series | 10 Series |
| HANOMAG | 33D | 16,060 | 05 Series | 10 Series |
| HANOMAG | 33C1 | 16,280 | 05 Series | 10 Series |
| HANOMAG | 35D | 20,900 | 10 Series | 15 Series |

XS SYSTEMS SERIES RECOMMENDATION CHART FOR LOADERS

| MANUFACTURER | MODEL | BREAKOUT FORCE IN LBS. | RECOMMENDED SERIES SIZE BASED ON | |
|--------------|-------------------|------------------------------|-------------------------------------|--------------------|
| | | | APPLICATION | |
| | | | STANDARD / HEAVY DUTY | EXTREME SERVICE |
| HANOMAG | 44D Turbo | 22,880 | 10 Series | 15 Series |
| HANOMAG | 55C | 25,300 | 15 Series | 15 Series |
| HANOMAG | 55D | 26,620 | 15 Series | 15 Series |
| HANOMAG | 50E | 31,460 | 15 Series | 20 Series |
| HANOMAG | 60E Turbo | 36,080 | 15 Series | 20 Series |
| HANOMAG | 60E | 37,400 | 20 Series | 20 Series |
| HANOMAG | 66C | 37,840 | 20 Series | 20 Series |
| HANOMAG | 66D Turbo | 41,800 | 20 Series | 20 Series |
| HANOMAG | 77C Turbo | 43,780 | 20 Series | 20 Series |
| HANOMAG | 77D Turbo | 43,780 | 20 Series | 20 Series |
| HANOMAG | 70E | 57,860 | 25 Series | 30 Series |
| HANOMAG | 80E | 66,000 | 25 Series | 30 Series |
| HYUNDAI | HL720-3 | 16,420 | 05 Series | 10 Series |
| HYUNDAI | HL730-3 | 19,620 | 10 Series | 10 Series |
| HYUNDAI | HL730-3 w/Cummins | 19,620 | 10 Series | 10 Series |
| HYUNDAI | HL740-3 | 23,200 | 10 Series | 15 Series |
| HYUNDAI | HL17 | 23,320 | 10 Series | 15 Series |
| HYUNDAI | HL750 | 30,270 | 15 Series | 20 Series |
| HYUNDAI | HL25 | 38,720 | 20 Series | 20 Series |
| HYUNDAI | HL760 | 40,630 | 20 Series | 20 Series |
| HYUNDAI | HL35 | 47,520 | 20 Series | 25 Series |
| HYUNDAI | HL770 | 50,200 | 20 Series | 25 Series |
| HYUNDAI | HL-780-3 | 58,130 | 25 Series | 30 Series |
| JCB | 406 | 8,140 | 04 Series | 05 Series |
| JCB | 407 | 8,140 | 04 Series | 05 Series |
| JCB | 412FM+ | 9,020 | 05 Series | 05 Series |
| JCB | 409 | 9,240 | 05 Series | 05 Series |
| JCB | 408 | 9,460 | 05 Series | 05 Series |
| JCB | 407B ZX | 9,923 | 05 Series | 05 Series |
| JCB | 409B ZX | 10,838 | 05 Series | 05 Series |
| JCB | 410 | 13,640 | 05 Series | 05 Series |
| JCB | 410E | 13,640 | 05 Series | 05 Series |
| JCB | 412E Turbo | 13,860 | 05 Series | 05 Series |
| JCB | 411 | 16,060 | 05 Series | 10 Series |
| JCB | 420 | 17,160 | 05 Series | 10 Series |
| JCB | 413 | 17,820 | 05 Series | 10 Series |
| JCB | 426HT | 17,820 | 05 Series | 10 Series |
| JCB | 415 | 18,920 | 05 Series | 10 Series |

XS SYSTEMS SERIES RECOMMENDATION CHART FOR LOADERS

| MANUFACTURER | MODEL | BREAKOUT FORCE IN LBS. | RECOMMENDED SERIES SIZE BASED ON | |
|--------------|------------------------|------------------------------|-------------------------------------|--------------------|
| | | | APPLICATION | |
| | | | STANDARD / HEAVY DUTY | EXTREME SERVICE |
| JCB | 415E | 19,140 | 10 Series | 10 Series |
| JCB | 907 / 1750 | 19,580 | 10 Series | 10 Series |
| JCB | 3000 | 20,020 | 10 Series | 10 Series |
| JCB | 418 | 21,560 | 10 Series | 15 Series |
| JCB | 416 | 22,000 | 10 Series | 15 Series |
| JCB | 425 | 22,220 | 10 Series | 15 Series |
| JCB | 416 HT | 22,570 | 10 Series | 15 Series |
| JCB | 416 HT Super High Lift | 22,794 | 10 Series | 15 Series |
| JCB | 423 | 25,300 | 15 Series | 15 Series |
| JCB | 430 | 25,300 | 15 Series | 15 Series |
| JCB | 435 | 26,400 | 15 Series | 15 Series |
| JCB | 436HT | 29,920 | 15 Series | 20 Series |
| JCB | 428 | 30,140 | 15 Series | 20 Series |
| JCB | 436 HT Super Lift | 32,925 | 15 Series | 20 Series |
| JCB | 426B ZX | 33,630 | 15 Series | 20 Series |
| JCB | 456 ZX | 36,193 | 15 Series | 20 Series |
| JCB | 436B ZX | 36,418 | 15 Series | 20 Series |
| JCB | 436 ZX | 39,565 | 20 Series | 20 Series |
| JCB | 456B ZX | 41,125 | 20 Series | 20 Series |
| JOHN DEERE | JD84 | 8,800 | 05 Series | 05 Series |
| JOHN DEERE | 304H | 10,119 | 05 Series | 05 Series |
| JOHN DEERE | 244H | 10,143 | 05 Series | 05 Series |
| JOHN DEERE | 304H Waste Handler | 10,410 | 05 Series | 05 Series |
| JOHN DEERE | JD344E | 14,300 | 05 Series | 05 Series |
| JOHN DEERE | JD544A | 16,060 | 05 Series | 10 Series |
| JOHN DEERE | 324H | 16,629 | 05 Series | 10 Series |
| JOHN DEERE | 344H | 16,629 | 05 Series | 10 Series |
| JOHN DEERE | JD444C | 16,940 | 05 Series | 10 Series |
| JOHN DEERE | 444H | 16,952 | 05 Series | 10 Series |
| JOHN DEERE | JD544B | 19,360 | 10 Series | 10 Series |
| JOHN DEERE | JD544D | 20,020 | 10 Series | 10 Series |
| JOHN DEERE | JD544C | 20,460 | 10 Series | 15 Series |
| JOHN DEERE | JD544E | 22,000 | 10 Series | 15 Series |
| JOHN DEERE | 544H | 22,487 | 10 Series | 15 Series |
| JOHN DEERE | JD544G | 23,540 | 10 Series | 15 Series |
| JOHN DEERE | JD644A | 23,760 | 10 Series | 15 Series |
| JOHN DEERE | JD644D | 23,980 | 10 Series | 15 Series |
| JOHN DEERE | JD644B | 24,200 | 10 Series | 15 Series |

XS SYSTEMS SERIES RECOMMENDATION CHART FOR LOADERS

| MANUFACTURER | MODEL | BREAKOUT FORCE IN LBS. | RECOMMENDED SERIES SIZE BASED ON | |
|--------------|--------------------|------------------------------|-------------------------------------|--------------------|
| | | | APPLICATION | |
| | | | STANDARD / HEAVY DUTY | EXTREME SERVICE |
| JOHN DEERE | JD644C | 24,420 | 10 Series | 15 Series |
| JOHN DEERE | 644H Waste Handler | 27,279 | 15 Series | 15 Series |
| JOHN DEERE | 624H | 27,771 | 15 Series | 15 Series |
| JOHN DEERE | JD624E | 29,700 | 15 Series | 20 Series |
| JOHN DEERE | JD844 | 34,320 | 15 Series | 20 Series |
| JOHN DEERE | 644H MH | 34,340 | 15 Series | 20 Series |
| JOHN DEERE | 644H | 34,432 | 15 Series | 20 Series |
| JOHN DEERE | JD644E | 35,860 | 15 Series | 20 Series |
| JOHN DEERE | 744H MH | 37,175 | 20 Series | 20 Series |
| JOHN DEERE | JD744 | 40,040 | 20 Series | 20 Series |
| JOHN DEERE | 744H | 42,150 | 20 Series | 20 Series |
| KAEBLE | SL14B | 25,300 | 15 Series | 15 Series |
| KAEBLE | SL18C | 34,100 | 15 Series | 20 Series |
| KAEBLE | SL18E | 34,100 | 15 Series | 20 Series |
| KAEBLE | SL20 | 34,100 | 15 Series | 20 Series |
| KAEBLE | SL18F | 34,760 | 15 Series | 20 Series |
| KAEBLE | SL20B | 39,160 | 20 Series | 20 Series |
| KAEBLE | SL25B | 39,820 | 20 Series | 20 Series |
| KAEBLE | SL25C | 55,660 | 25 Series | 25 Series |
| KAEBLE | SL26 | 55,660 | 25 Series | 25 Series |
| KAWASAKI | 45ZII | 9,680 | 05 Series | 05 Series |
| KAWASAKI | 50ZIV-2 | 13,700 | 05 Series | 05 Series |
| KAWASAKI | 50ZII | 14,960 | 05 Series | 05 Series |
| KAWASAKI | 60ZIV-2 | 17,600 | 05 Series | 10 Series |
| KAWASAKI | 60ZII | 18,260 | 05 Series | 10 Series |
| KAWASAKI | 65ZIV-2 | 21,400 | 10 Series | 15 Series |
| KAWASAKI | 65ZII | 22,880 | 10 Series | 15 Series |
| KAWASAKI | 70ZIV-2 | 27,560 | 15 Series | 15 Series |
| KAWASAKI | 70Z IV | 29,480 | 15 Series | 20 Series |
| KAWASAKI | 70ZII | 30,140 | 15 Series | 20 Series |
| KAWASAKI | 80ZIV-2 | 34,390 | 15 Series | 20 Series |
| KAWASAKI | 80Z III | 34,540 | 15 Series | 20 Series |
| KAWASAKI | 80ZII | 35,200 | 15 Series | 20 Series |
| KAWASAKI | 85ZII | 40,700 | 20 Series | 20 Series |
| KAWASAKI | 85ZIV-2 | 41,225 | 20 Series | 20 Series |
| KAWASAKI | 90ZIV-2 | 46,075 | 20 Series | 25 Series |
| KAWASAKI | 90ZII | 47,300 | 20 Series | 25 Series |
| KAWASAKI | 95ZIV-2 | 54,670 | 20 Series | 25 Series |

XS SYSTEMS SERIES RECOMMENDATION CHART FOR LOADERS

| MANUFACTURER | MODEL | BREAKOUT FORCE IN LBS. | RECOMMENDED SERIES SIZE BASED ON | |
|--------------|--------------------|------------------------------|-------------------------------------|--------------------|
| | | | APPLICATION | |
| | | | STANDARD / HEAVY DUTY | EXTREME SERVICE |
| KAWASAKI | 95ZII | 56,100 | 25 Series | 25 Series |
| KAWASAKI | 110ZII | 69,520 | 25 Series | 30 Series |
| KAWASAKI | 115ZII | 80,520 | 30 Series | 40 Series |
| KAWASAKI | 115ZIV-2 | 84,900 | 30 Series | 40 Series |
| KAWASAKI | 115ZIV-2 High Lift | 90,400 | 40 Series | 50 Series |
| KOBELCO | LK200 | 8,580 | 04 Series | 05 Series |
| KOBELCO | LK80Z | 9,680 | 05 Series | 05 Series |
| KOBELCO | LK300A | 12,100 | 05 Series | 05 Series |
| KOBELCO | LK350 Mk II | 14,740 | 05 Series | 05 Series |
| KOBELCO | LK120Z | 14,960 | 05 Series | 05 Series |
| KOBELCO | LK150Z | 18,260 | 05 Series | 10 Series |
| KOBELCO | LK400 | 18,480 | 05 Series | 10 Series |
| KOBELCO | LK500 | 20,460 | 10 Series | 15 Series |
| KOBELCO | LK550 Mk II | 22,440 | 10 Series | 15 Series |
| KOBELCO | LK190Z | 23,320 | 10 Series | 15 Series |
| KOBELCO | LK700A | 27,500 | 15 Series | 15 Series |
| KOBELCO | LK600 | 28,600 | 15 Series | 15 Series |
| KOBELCO | LK650 Mk II | 29,480 | 15 Series | 20 Series |
| KOBELCO | LK230Z | 30,140 | 15 Series | 20 Series |
| KOBELCO | LK270Z | 35,200 | 15 Series | 20 Series |
| KOBELCO | LK850-II | 40,260 | 20 Series | 20 Series |
| KOBELCO | LK310Z | 40,700 | 20 Series | 20 Series |
| KOBELCO | LK900 | 47,080 | 20 Series | 25 Series |
| KOBELCO | LK350Z | 47,300 | 20 Series | 25 Series |
| KOBELCO | LK1500A | 51,920 | 20 Series | 25 Series |
| KOBELCO | LK470Z | 56,100 | 25 Series | 25 Series |
| KOBELCO | LK560Z | 80,520 | 30 Series | 40 Series |
| KOMATSU | WA20-1 | 4,400 | 04 Series | 04 Series |
| KOMATSU | WA30-2 | 5,720 | 04 Series | 04 Series |
| KOMATSU | WA30-5 | 5,950 | 04 Series | 04 Series |
| KOMATSU | WA50-3 | 6,720 | 04 Series | 04 Series |
| KOMATSU | WA60 | 7,260 | 04 Series | 05 Series |
| KOMATSU | WA40-1 | 7,920 | 04 Series | 05 Series |
| KOMATSU | WA65-3 | 8,955 | 05 Series | 05 Series |
| KOMATSU | WA75 | 9,020 | 05 Series | 05 Series |
| KOMATSU | WA70-1 | 9,240 | 05 Series | 05 Series |
| KOMATSU | WA75-3 | 10,935 | 05 Series | 05 Series |
| KOMATSU | WA65 | 11,440 | 05 Series | 05 Series |

XS SYSTEMS SERIES RECOMMENDATION CHART FOR LOADERS

| MANUFACTURER | MODEL | BREAKOUT FORCE IN LBS. | RECOMMENDED SERIES SIZE BASED ON | |
|--------------|---------------------|------------------------------|-------------------------------------|--------------------|
| | | | APPLICATION | |
| | | | STANDARD / HEAVY DUTY | EXTREME SERVICE |
| KOMATSU | WA90 | 15,400 | 05 Series | 10 Series |
| KOMATSU | WA100-1 | 16,060 | 05 Series | 10 Series |
| KOMATSU | WA180-3 APlus | 16,160 | 05 Series | 10 Series |
| KOMATSU | WA120-3 APlus | 16,280 | 05 Series | 10 Series |
| KOMATSU | WA95-3 | 16,313 | 05 Series | 10 Series |
| KOMATSU | WA150-1 | 18,700 | 05 Series | 10 Series |
| KOMATSU | WA180PT-3 A PLUS | 20,234 | 10 Series | 10 Series |
| KOMATSU | W70-3 | 21,560 | 10 Series | 15 Series |
| KOMATSU | WA320-3 High Lift | 21,777 | 10 Series | 15 Series |
| KOMATSU | WA120-1 | 22,440 | 10 Series | 15 Series |
| KOMATSU | WA200-1 | 22,660 | 10 Series | 15 Series |
| KOMATSU | WA250-3 High Lift | 22,706 | 10 Series | 15 Series |
| KOMATSU | WA180-1 | 22,880 | 10 Series | 15 Series |
| KOMATSU | WA200-5 | 23,038 | 10 Series | 15 Series |
| KOMATSU | WA300-1 | 23,320 | 10 Series | 15 Series |
| KOMATSU | WA250PT-5 | 24,581 | 10 Series | 15 Series |
| KOMATSU | WA250-3 APlus | 26,896 | 15 Series | 15 Series |
| KOMATSU | WA320-2 APlus | 27,560 | 15 Series | 15 Series |
| KOMATSU | WA320-3 AVANCE PLUS | 27,560 | 15 Series | 15 Series |
| KOMATSU | WA300-3 Custom | 27,563 | 15 Series | 15 Series |
| KOMATSU | W90-3 | 27,940 | 15 Series | 15 Series |
| KOMATSU | WA320-5 | 29,057 | 15 Series | 15 Series |
| KOMATSU | WA250-5 | 30,534 | 15 Series | 20 Series |
| KOMATSU | WA250-1 | 31,020 | 15 Series | 20 Series |
| KOMATSU | WA320-1 | 32,120 | 15 Series | 20 Series |
| KOMATSU | WA380-5 | 33,245 | 15 Series | 20 Series |
| KOMATSU | WA400-5 | 33,290 | 15 Series | 20 Series |
| KOMATSU | WA380-3 APlus | 33,296 | 15 Series | 20 Series |
| KOMATSU | WA390-1 | 33,440 | 15 Series | 20 Series |
| KOMATSU | W120-3 | 34,540 | 15 Series | 20 Series |
| KOMATSU | WA380-3 High Lift | 36,009 | 15 Series | 20 Series |
| KOMATSU | WA380-3 | 36,520 | 15 Series | 20 Series |
| KOMATSU | WA450-3 MH APlus | 36,934 | 20 Series | 20 Series |
| KOMATSU | WA350-1 | 38,720 | 20 Series | 20 Series |
| KOMATSU | WA380-1 | 38,720 | 20 Series | 20 Series |
| KOMATSU | WA420-2 APlus | 40,793 | 20 Series | 20 Series |
| KOMATSU | WA420-3 High Lift | 41,120 | 20 Series | 20 Series |
| KOMATSU | WA400-1 | 42,900 | 20 Series | 20 Series |

XS SYSTEMS SERIES RECOMMENDATION CHART FOR LOADERS

| MANUFACTURER | MODEL | BREAKOUT FORCE IN LBS. | RECOMMENDED SERIES SIZE BASED ON | |
|--------------|----------------------|------------------------------|-------------------------------------|--------------------|
| | | | APPLICATION | |
| | | | STANDARD / HEAVY DUTY | EXTREME SERVICE |
| KOMATSU | WA450-5 | 43,162 | 20 Series | 20 Series |
| KOMATSU | WA450-3 APlus | 43,218 | 20 Series | 20 Series |
| KOMATSU | WA420-1 | 43,560 | 20 Series | 20 Series |
| KOMATSU | WA470-1 | 44,660 | 20 Series | 25 Series |
| KOMATSU | WA450-3 High Lift | 45,308 | 20 Series | 25 Series |
| KOMATSU | W170-2 | 47,080 | 20 Series | 25 Series |
| KOMATSU | WA480-5 | 47,658 | 20 Series | 25 Series |
| KOMATSU | WA450-1 | 48,620 | 20 Series | 25 Series |
| KOMATSU | WA500-3 Avance Plus | 52,259 | 20 Series | 25 Series |
| KOMATSU | WA500-1 | 59,400 | 25 Series | 30 Series |
| KOMATSU | WA500-3 High Lift | 62,721 | 25 Series | 30 Series |
| KOMATSU | W260-1 | 73,480 | 30 Series | 40 Series |
| KOMATSU | WA600-3 Load & Carry | 78,022 | 30 Series | 40 Series |
| KOMATSU | WA600-3 AVANCE PLUS | 83,010 | 30 Series | 40 Series |
| KOMATSU | WA600-3 | 83,025 | 30 Series | 40 Series |
| KOMATSU | WA600-3 High Lift | 98,216 | 40 Series | 50 Series |
| KOMATSU | WA600-1 | 99,880 | 40 Series | 50 Series |
| KOMATSU | WA700-3 | 116,180 | 50 Series | 70 Series |
| KOMATSU | WA700-3 With AJSS | 116,180 | 50 Series | 70 Series |
| KOMATSU | WA700-1 | 142,340 | 70 Series | 85 Series |
| KOMATSU | WA900-3 | 149,690 | 70 Series | 85 Series |
| KOMATSU | WA800-3 | 152,120 | 70 Series | 85 Series |
| KOMATSU | WA900-3 High Lift | 158,070 | 85 Series | 85 Series |
| KOMATSU | WA800-3 High Lift | 158,270 | 85 Series | 85 Series |
| KOMATSU | WA800-2 | 179,520 | 85 Series | 115 Series |
| KOMATSU | WA1200-3 High Lift | 227,782 | 115 Series | 145 Series |
| KOMATSU | WA1200-3 | 286,600 | 145 Series | 145 Series |
| KRAMER | 112SL | 2,420 | 04 Series | 04 Series |
| KRAMER | 314T | 4,180 | 04 Series | 04 Series |
| KRAMER | 212LT | 4,400 | 04 Series | 04 Series |
| KRAMER | 212E | 4,620 | 04 Series | 04 Series |
| KRAMER | 312L | 5,940 | 04 Series | 04 Series |
| KRAMER | 312LE | 5,940 | 04 Series | 04 Series |
| KRAMER | 312SL | 5,940 | 04 Series | 04 Series |
| KRAMER | 312E | 6,380 | 04 Series | 04 Series |
| KRAMER | 312LT | 6,380 | 04 Series | 04 Series |
| KRAMER | 312SE | 6,380 | 04 Series | 04 Series |
| KRAMER | 412E | 7,040 | 04 Series | 05 Series |

XS SYSTEMS SERIES RECOMMENDATION CHART FOR LOADERS

| MANUFACTURER | MODEL | BREAKOUT FORCE IN LBS. | RECOMMENDED SERIES SIZE BASED ON | |
|--------------|------------------|------------------------------|-------------------------------------|--------------------|
| | | | APPLICATION | |
| | | | STANDARD / HEAVY DUTY | EXTREME SERVICE |
| KRAMER | 512SE | 7,480 | 04 Series | 05 Series |
| KRAMER | 512SL | 7,700 | 04 Series | 05 Series |
| KRAMER | 612 | 11,220 | 05 Series | 05 Series |
| KRAMER | 612SL | 11,220 | 05 Series | 05 Series |
| KramerAllrad | 120 | 2,406 | 04 Series | 04 Series |
| KramerAllrad | 118 Series 2 | 2,406 | 04 Series | 04 Series |
| KramerAllrad | 318 Series 2 | 6,520 | 04 Series | 04 Series |
| KramerAllrad | 420 series 2 | 7,801 | 04 Series | 05 Series |
| KramerAllrad | 421 | 8,183 | 04 Series | 05 Series |
| KramerAllrad | 320 Series 2 | 8,323 | 04 Series | 05 Series |
| KramerAllrad | 521 | 8,722 | 04 Series | 05 Series |
| KramerAllrad | 418 Series 2 | 8,992 | 05 Series | 05 Series |
| KramerAllrad | 520 | 9,689 | 05 Series | 05 Series |
| KramerAllrad | 520 Series 2 | 9,689 | 05 Series | 05 Series |
| KramerAllrad | 620 series 2 | 10,319 | 05 Series | 05 Series |
| KramerAllrad | 720 | 11,555 | 05 Series | 05 Series |
| KramerAllrad | 720 Series 2 | 11,555 | 05 Series | 05 Series |
| KUBOTA | R310 | 3,520 | 04 Series | 04 Series |
| KUBOTA | R410 | 5,940 | 04 Series | 04 Series |
| KUBOTA | R420 | 6,550 | 04 Series | 04 Series |
| KUBOTA | R510 | 7,260 | 04 Series | 05 Series |
| KUBOTA | R520 | 7,425 | 04 Series | 05 Series |
| LETOURNEAU | L800 | 115,720 | 50 Series | 70 Series |
| LETOURNEAU | L-1000 | 150,000 | 70 Series | 85 Series |
| LETOURNEAU | L-1000 HIGH LIFT | 155,000 | 70 Series | 85 Series |
| LETOURNEAU | L1200 | 160,600 | 85 Series | 115 Series |
| LETOURNEAU | L-1100 HIGH LIFT | 180,000 | 85 Series | 115 Series |
| LETOURNEAU | L-1100 | 185,000 | 85 Series | 115 Series |
| LETOURNEAU | L-1350 HIGH LIFT | 217,930 | 115 Series | 145 Series |
| LETOURNEAU | L-1350 | 220,000 | 115 Series | 145 Series |
| LETOURNEAU | L-1800 | 263,000 | 145 Series | 145 Series |
| LETOURNEAU | L-1800 HIGH LIFT | 266,000 | 145 Series | 145 Series |
| LETOURNEAU | L-1850 | 276,181 | 145 Series | 145 Series |
| LETOURNEAU | L-1850 HIGH LIFT | 280,672 | 145 Series | 145 Series |
| LETOURNEAU | L-1400 | 282,000 | 145 Series | 145 Series |
| LETOURNEAU | L-1400 HIGH LIFT | 285,000 | 145 Series | 145 Series |
| LETOURNEAU | L-2350 | 289,000 | 145 Series | 145 Series |
| LIEBHERR | L504 | 4,840 | 04 Series | 04 Series |

XS SYSTEMS SERIES RECOMMENDATION CHART FOR LOADERS

| MANUFACTURER | MODEL | BREAKOUT FORCE IN LBS. | RECOMMENDED SERIES SIZE BASED ON | |
|--------------|---------|------------------------------|-------------------------------------|--------------------|
| | | | APPLICATION | |
| | | | STANDARD / HEAVY DUTY | EXTREME SERVICE |
| LIEBHERR | L507 | 9,240 | 05 Series | 05 Series |
| LIEBHERR | L506 | 9,680 | 05 Series | 05 Series |
| LIEBHERR | L508 | 10,780 | 05 Series | 05 Series |
| LIEBHERR | L510 | 17,160 | 05 Series | 10 Series |
| LIEBHERR | L511 | 19,360 | 10 Series | 10 Series |
| LIEBHERR | L512 | 21,120 | 10 Series | 15 Series |
| LIEBHERR | L521 | 22,000 | 10 Series | 15 Series |
| LIEBHERR | L522 | 22,880 | 10 Series | 15 Series |
| LIEBHERR | L531 | 25,740 | 15 Series | 15 Series |
| LIEBHERR | L541 | 29,480 | 15 Series | 20 Series |
| LIEBHERR | L551 | 40,260 | 20 Series | 20 Series |
| Link-Belt | L120D | 19,108 | 10 Series | 10 Series |
| Link-Belt | L125 | 22,031 | 10 Series | 15 Series |
| Link-Belt | L130 | 27,876 | 15 Series | 15 Series |
| MASSEY FERG. | MF613 | 11,000 | 05 Series | 05 Series |
| MASSEY FERG. | MF615 | 13,200 | 05 Series | 05 Series |
| MATBRO | LS200 | 10,120 | 05 Series | 05 Series |
| MATBRO | LS300 | 17,600 | 05 Series | 10 Series |
| MATBRO | LS500 | 26,840 | 15 Series | 15 Series |
| MITSUBISHI | WS400 | 5,500 | 04 Series | 04 Series |
| MITSUBISHI | WS500 | 7,040 | 04 Series | 05 Series |
| New Holland | LW50 | 10,575 | 05 Series | 05 Series |
| New Holland | LW50.B | 12,050 | 05 Series | 05 Series |
| New Holland | LW70.B | 12,248 | 05 Series | 05 Series |
| New Holland | LW60.B | 12,278 | 05 Series | 05 Series |
| New Holland | LW80 | 15,030 | 05 Series | 10 Series |
| New Holland | LW90 | 15,148 | 05 Series | 10 Series |
| New Holland | LW80.B | 15,921 | 05 Series | 10 Series |
| New Holland | LW110 | 17,640 | 05 Series | 10 Series |
| New Holland | LW130 | 20,437 | 10 Series | 15 Series |
| New Holland | LW170 | 29,542 | 15 Series | 20 Series |
| New Holland | LW190.B | 31,967 | 15 Series | 20 Series |
| New Holland | LW190 | 35,935 | 15 Series | 20 Series |
| New Holland | LW230.B | 39,352 | 20 Series | 20 Series |
| New Holland | LW230 | 39,463 | 20 Series | 20 Series |
| New Holland | LW270 | 41,447 | 20 Series | 20 Series |
| New Holland | LW270.B | 50,045 | 20 Series | 25 Series |
| O&K | L4 | 10,120 | 05 Series | 05 Series |

XS SYSTEMS SERIES RECOMMENDATION CHART FOR LOADERS

| MANUFACTURER | MODEL | BREAKOUT FORCE IN LBS. | RECOMMENDED SERIES SIZE BASED ON | |
|--------------|-----------|------------------------------|-------------------------------------|--------------------|
| | | | APPLICATION | |
| | | | STANDARD / HEAVY DUTY | EXTREME SERVICE |
| O&K | L6 | 10,560 | 05 Series | 05 Series |
| O&K | L7 | 10,780 | 05 Series | 05 Series |
| O&K | L9 | 10,780 | 05 Series | 05 Series |
| O&K | L8 | 11,000 | 05 Series | 05 Series |
| O&K | L5 | 12,100 | 05 Series | 05 Series |
| O&K | L6F | 12,100 | 05 Series | 05 Series |
| O&K | L10 | 14,080 | 05 Series | 05 Series |
| O&K | L12 | 17,600 | 05 Series | 10 Series |
| O&K | L15 | 20,900 | 10 Series | 15 Series |
| O&K | L15i | 22,660 | 10 Series | 15 Series |
| O&K | L20 | 23,980 | 10 Series | 15 Series |
| O&K | L20i | 26,840 | 15 Series | 15 Series |
| O&K | L25 | 29,260 | 15 Series | 15 Series |
| O&K | L35 | 32,780 | 15 Series | 20 Series |
| O&K | L30 | 36,740 | 15 Series | 20 Series |
| O&K | L45 | 39,820 | 20 Series | 20 Series |
| O&K | L55 | 49,720 | 20 Series | 25 Series |
| PEL-JOB | EL451 | 1,980 | 04 Series | 04 Series |
| PEL-JOB | EL751 | 3,520 | 04 Series | 04 Series |
| PEL-JOB | EL851 | 7,480 | 04 Series | 05 Series |
| ROSSI | 650HDS | 14,740 | 05 Series | 05 Series |
| ROSSI | 500HDS | 16,720 | 05 Series | 10 Series |
| ROSSI | 950HDS | 18,920 | 05 Series | 10 Series |
| ROSSI | 1600HDS | 29,260 | 15 Series | 15 Series |
| ROSSI | 1800HDS | 36,080 | 15 Series | 20 Series |
| ROSSI | 2200HDS | 40,480 | 20 Series | 20 Series |
| ROSSI | 2800HDS | 46,640 | 20 Series | 25 Series |
| ROSSI | 4800HDS | 65,120 | 25 Series | 30 Series |
| SAMSUNG | SL150 | 29,700 | 15 Series | 20 Series |
| SAMSUNG | SL180 | 36,080 | 15 Series | 20 Series |
| SAMSUNG | SL200 | 41,800 | 20 Series | 20 Series |
| SAMSUNG | SL250 | 43,780 | 20 Series | 20 Series |
| Scat Trak | 3200 | 6,107 | 04 Series | 04 Series |
| Scat Trak | 3210 | 6,107 | 04 Series | 04 Series |
| SCHAEFF | SKL808 | 4,400 | 04 Series | 04 Series |
| SCHAEFF | SKL809 | 4,840 | 04 Series | 04 Series |
| SCHAEFF | SKL809 S | 4,840 | 04 Series | 04 Series |
| SCHAEFF | SKL809 S9 | 4,840 | 04 Series | 04 Series |

XS SYSTEMS SERIES RECOMMENDATION CHART FOR LOADERS

| MANUFACTURER | MODEL | BREAKOUT FORCE IN LBS. | RECOMMENDED SERIES SIZE BASED ON | |
|--------------|----------|------------------------------|-------------------------------------|--------------------|
| | | | APPLICATION | |
| | | | STANDARD / HEAVY DUTY | EXTREME SERVICE |
| SCHAEFF | SKL810 | 4,840 | 04 Series | 04 Series |
| SCHAEFF | SKL820 | 5,500 | 04 Series | 04 Series |
| SCHAEFF | SKL811 A | 5,720 | 04 Series | 04 Series |
| SCHAEFF | SKL820 A | 6,160 | 04 Series | 04 Series |
| SCHAEFF | SKL821 | 7,260 | 04 Series | 05 Series |
| SCHAEFF | SKL821 A | 7,480 | 04 Series | 05 Series |
| SCHAEFF | SKL830 | 7,480 | 04 Series | 05 Series |
| SCHAEFF | SKL 823 | 7,630 | 04 Series | 05 Series |
| SCHAEFF | SKL830 A | 8,140 | 04 Series | 05 Series |
| SCHAEFF | SKL840 | 8,580 | 04 Series | 05 Series |
| SCHAEFF | SKL831 | 8,800 | 05 Series | 05 Series |
| SCHAEFF | SKL831 A | 8,800 | 05 Series | 05 Series |
| SCHAEFF | SKL832 A | 8,800 | 05 Series | 05 Series |
| SCHAEFF | SKS631 | 8,800 | 05 Series | 05 Series |
| SCHAEFF | SCL-515 | 8,960 | 05 Series | 05 Series |
| SCHAEFF | SKL 833 | 9,890 | 05 Series | 05 Series |
| SCHAEFF | SKS 633 | 10,115 | 05 Series | 05 Series |
| SCHAEFF | SKL840 A | 10,120 | 05 Series | 05 Series |
| SCHAEFF | SKL841 | 10,340 | 05 Series | 05 Series |
| SCHAEFF | SKL841 A | 10,340 | 05 Series | 05 Series |
| SCHAEFF | SKL850 | 10,560 | 05 Series | 05 Series |
| SCHAEFF | SKL851 | 11,880 | 05 Series | 05 Series |
| SCHAEFF | SKL851 A | 11,880 | 05 Series | 05 Series |
| SCHAEFF | SKL 853 | 12,815 | 05 Series | 05 Series |
| SCHAEFF | SKL861 A | 13,200 | 05 Series | 05 Series |
| SCHAEFF | SKL 863 | 15,050 | 05 Series | 10 Series |
| SCHAEFF | SKL871 | 20,680 | 10 Series | 15 Series |
| SCHAEFF | SKL 873 | 24,325 | 10 Series | 15 Series |
| Swinger | 2000 | 4,752 | 04 Series | 04 Series |
| Swinger | 3000 | 8,500 | 04 Series | 05 Series |
| TCM | E804 | 5,940 | 04 Series | 04 Series |
| TCM | E806 | 7,060 | 04 Series | 05 Series |
| TCM | E820 | 10,360 | 05 Series | 05 Series |
| TCM | E830 | 14,550 | 05 Series | 05 Series |
| TCM | E835 | 18,740 | 05 Series | 10 Series |
| TCM | E840 | 22,050 | 10 Series | 15 Series |
| TEREX | 72-31B | 22,660 | 10 Series | 15 Series |
| TEREX | 80C | 36,520 | 15 Series | 20 Series |

XS SYSTEMS SERIES RECOMMENDATION CHART FOR LOADERS

| MANUFACTURER | MODEL | BREAKOUT FORCE IN LBS. | RECOMMENDED SERIES SIZE BASED ON | |
|--------------|-------------|------------------------------|-------------------------------------|--------------------|
| | | | APPLICATION | |
| | | | STANDARD / HEAVY DUTY | EXTREME SERVICE |
| TEREX | 72-51B | 38,280 | 20 Series | 20 Series |
| TEREX | 72-61 | 42,240 | 20 Series | 20 Series |
| TEREX | 85B | 57,420 | 25 Series | 30 Series |
| TEREX | 72-81 | 61,600 | 25 Series | 30 Series |
| TEREX | 72-71B | 67,100 | 25 Series | 30 Series |
| TEREX | 90C | 97,680 | 40 Series | 50 Series |
| V.M.E. | L30 | 12,320 | 05 Series | 05 Series |
| V.M.E. | 4200 | 12,760 | 05 Series | 05 Series |
| V.M.E. | 4200B | 15,620 | 05 Series | 10 Series |
| V.M.E. | L50 | 16,720 | 05 Series | 10 Series |
| V.M.E. | 4300 | 17,820 | 05 Series | 10 Series |
| V.M.E. | 4300B | 18,480 | 05 Series | 10 Series |
| V.M.E. | 4400 | 19,800 | 10 Series | 10 Series |
| V.M.E. | 4500 | 24,200 | 10 Series | 15 Series |
| V.M.E. | L70 | 25,520 | 15 Series | 15 Series |
| V.M.E. | L90B | 27,060 | 15 Series | 15 Series |
| V.M.E. | L90C | 27,940 | 15 Series | 15 Series |
| V.M.E. | L120B | 34,320 | 15 Series | 20 Series |
| V.M.E. | 4600 | 34,760 | 15 Series | 20 Series |
| V.M.E. | 4600B | 34,760 | 15 Series | 20 Series |
| V.M.E. | L120C | 35,420 | 15 Series | 20 Series |
| V.M.E. | L160 | 40,040 | 20 Series | 20 Series |
| V.M.E. | L150 | 44,000 | 20 Series | 20 Series |
| V.M.E. | L180 | 46,420 | 20 Series | 25 Series |
| V.M.E. | L190B | 60,060 | 25 Series | 30 Series |
| V.M.E. | L190 | 60,500 | 25 Series | 30 Series |
| V.M.E. | L270B | 79,860 | 30 Series | 40 Series |
| V.M.E. | L320 | 110,000 | 50 Series | 70 Series |
| V.M.E. | L330C | 110,000 | 50 Series | 70 Series |
| V.M.E. | L480 | 141,680 | 70 Series | 85 Series |
| V.M.E. | L480 Turbo | 141,680 | 70 Series | 85 Series |
| V.M.E. | 475CT Turbo | 148,500 | 70 Series | 85 Series |
| VENIERI | 2.63 | 6,600 | 04 Series | 04 Series |
| VENIERI | 3.63 | 6,600 | 04 Series | 04 Series |
| VENIERI | 3.73B | 6,600 | 04 Series | 04 Series |
| VENIERI | 4.63 | 7,040 | 04 Series | 05 Series |
| VENIERI | 4.73 | 7,040 | 04 Series | 05 Series |
| VENIERI | 1.63B | 7,920 | 04 Series | 05 Series |

XS SYSTEMS SERIES RECOMMENDATION CHART FOR LOADERS

| MANUFACTURER | MODEL | BREAKOUT FORCE IN LBS. | RECOMMENDED SERIES SIZE BASED ON | |
|--------------|--------------------|------------------------------|-------------------------------------|--------------------|
| | | | APPLICATION | |
| | | | STANDARD / HEAVY DUTY | EXTREME SERVICE |
| VENIERI | 6.33 | 8,580 | 04 Series | 05 Series |
| VENIERI | 3.63B | 9,460 | 05 Series | 05 Series |
| VENIERI | 6.53B | 11,000 | 05 Series | 05 Series |
| VENIERI | 3.63D | 11,220 | 05 Series | 05 Series |
| VENIERI | 4.63B | 11,440 | 05 Series | 05 Series |
| VENIERI | 4.63C | 13,420 | 05 Series | 05 Series |
| VENIERI | 6.63 | 13,860 | 05 Series | 05 Series |
| VENIERI | 8.63 | 13,860 | 05 Series | 05 Series |
| VENIERI | 7.73 | 17,160 | 05 Series | 10 Series |
| VENIERI | 14.63 | 24,860 | 10 Series | 15 Series |
| VersaDyne | 3K | 8,000 | 04 Series | 05 Series |
| VOLVO | ZL402C | 7,419 | 04 Series | 05 Series |
| VOLVO | L30B | 10,116 | 05 Series | 05 Series |
| VOLVO | L35B | 10,791 | 05 Series | 05 Series |
| VOLVO | L40B | 12,589 | 05 Series | 05 Series |
| VOLVO | L45B | 13,938 | 05 Series | 05 Series |
| VOLVO | L50D | 15,695 | 05 Series | 10 Series |
| VOLVO | L70D | 19,530 | 10 Series | 10 Series |
| VOLVO | L60E | 20,997 | 10 Series | 15 Series |
| VOLVO | L70E | 23,940 | 10 Series | 15 Series |
| VOLVO | L90D | 24,459 | 10 Series | 15 Series |
| VOLVO | L90E | 26,606 | 15 Series | 15 Series |
| VOLVO | L180E Long Boom | 31,010 | 15 Series | 20 Series |
| VOLVO | L120D | 31,293 | 15 Series | 20 Series |
| VOLVO | L150 Waste Handler | 33,080 | 15 Series | 20 Series |
| VOLVO | L120E | 34,180 | 15 Series | 20 Series |
| VOLVO | L110E | 35,140 | 15 Series | 20 Series |
| VOLVO | L180 Waste Handler | 35,800 | 15 Series | 20 Series |
| VOLVO | L150E | 38,370 | 20 Series | 20 Series |
| VOLVO | L150D | 39,290 | 20 Series | 20 Series |
| VOLVO | L120 Long Boom | 40,730 | 20 Series | 20 Series |
| VOLVO | L180D | 47,655 | 20 Series | 25 Series |
| VOLVO | L180E | 48,910 | 20 Series | 25 Series |
| VOLVO | L180E HIGH LIFT | 48,910 | 20 Series | 25 Series |
| VOLVO | L180 Long Boom | 49,210 | 20 Series | 25 Series |
| VOLVO | L220D | 49,480 | 20 Series | 25 Series |
| VOLVO | L220E Long Boom | 50,110 | 20 Series | 25 Series |
| VOLVO | L220E | 53,774 | 20 Series | 25 Series |

XS SYSTEMS SERIES RECOMMENDATION CHART FOR LOADERS

| MANUFACTURER | MODEL | BREAKOUT FORCE IN LBS. | RECOMMENDED SERIES SIZE BASED ON | |
|--------------|-----------------|------------------------------|-------------------------------------|--------------------|
| | | | APPLICATION | |
| | | | STANDARD / HEAVY DUTY | EXTREME SERVICE |
| VOLVO | L330E Long Boom | 88,100 | 40 Series | 50 Series |
| VOLVO | L330D | 88,911 | 40 Series | 50 Series |
| VOLVO | L330E | 102,910 | 40 Series | 50 Series |
| WALDON | 4100 | 3,375 | 04 Series | 04 Series |
| WALDON | 5100 | 5,000 | 04 Series | 04 Series |
| WALDON | 4500B | 5,950 | 04 Series | 04 Series |
| WALDON | 7000 | 9,000 | 05 Series | 05 Series |
| WALDON | 7500 | 10,097 | 05 Series | 05 Series |
| WALDON | 6000C | 10,450 | 05 Series | 05 Series |
| WALDON | 8500C | 13,800 | 05 Series | 05 Series |
| XCMG | XWL30G | 24,728 | 10 Series | 15 Series |
| XCMG | XWL40G | 31,472 | 15 Series | 20 Series |
| YANMAR | V1 | 1,760 | 04 Series | 04 Series |
| YANMAR | V3 | 4,840 | 04 Series | 04 Series |
| YANMAR | V3-5 | 5,072 | 04 Series | 04 Series |
| YANMAR | V4-5 | 5,510 | 04 Series | 04 Series |
| YANMAR | V4 | 5,940 | 04 Series | 04 Series |
| YANMAR | V4-5HL | 6,170 | 04 Series | 04 Series |
| ZEPPELIN | ZL4B | 7,700 | 04 Series | 05 Series |
| ZEPPELIN | ZL6B | 8,800 | 05 Series | 05 Series |
| ZEPPELIN | ZL8B | 10,560 | 05 Series | 05 Series |
| ZEPPELIN | ZL10B | 12,100 | 05 Series | 05 Series |
| ZEPPELIN | ZL12B | 13,420 | 05 Series | 05 Series |
| ZETTELMAYER | ZL401B | 3,080 | 04 Series | 04 Series |
| ZETTELMAYER | ZL302 | 3,520 | 04 Series | 04 Series |
| ZETTELMAYER | ZL401 | 5,500 | 04 Series | 04 Series |
| ZETTELMAYER | ZL402 | 7,480 | 04 Series | 05 Series |
| ZETTELMAYER | ZL501 | 8,140 | 04 Series | 05 Series |
| ZETTELMAYER | ZL601 | 8,580 | 04 Series | 05 Series |
| ZETTELMAYER | ZL601B | 9,020 | 05 Series | 05 Series |
| ZETTELMAYER | ZL602 | 9,020 | 05 Series | 05 Series |
| ZETTELMAYER | ZL702 | 9,020 | 05 Series | 05 Series |
| ZETTELMAYER | ZL501B | 9,240 | 05 Series | 05 Series |
| ZETTELMAYER | ZL502 | 9,240 | 05 Series | 05 Series |
| ZETTELMAYER | ZL801 | 13,200 | 05 Series | 05 Series |
| ZETTELMAYER | ZL802 | 13,200 | 05 Series | 05 Series |
| ZETTELMAYER | ZL1001 | 13,420 | 05 Series | 05 Series |
| ZETTELMAYER | ZL1002i | 13,420 | 05 Series | 05 Series |

XS SYSTEMS SERIES RECOMMENDATION CHART FOR LOADERS

| MANUFACTURER | MODEL | BREAKOUT FORCE IN LBS. | RECOMMENDED SERIES SIZE BASED ON | |
|--------------|---------|------------------------------|-------------------------------------|--------------------|
| | | | APPLICATION | |
| | | | STANDARD / HEAVY DUTY | EXTREME SERVICE |
| ZETTELMEYER | ZL801B | 13,420 | 05 Series | 05 Series |
| ZETTELMEYER | ZL802i | 13,860 | 05 Series | 05 Series |
| ZETTELMEYER | ZL802Si | 13,860 | 05 Series | 05 Series |
| ZETTELMEYER | ZL1700 | 20,460 | 10 Series | 15 Series |
| ZETTELMEYER | ZL1801 | 25,740 | 15 Series | 15 Series |
| ZETTELMEYER | ZL2001 | 30,140 | 15 Series | 20 Series |
| ZETTELMEYER | ZL2002 | 31,020 | 15 Series | 20 Series |
| ZETTELMEYER | ZL4001 | 41,800 | 20 Series | 20 Series |
| ZETTELMEYER | ZL4001B | 46,200 | 20 Series | 25 Series |
| ZETTELMEYER | ZL5001F | 46,200 | 20 Series | 25 Series |
| ZETTELMEYER | ZL3002 | 48,180 | 20 Series | 25 Series |
| ZETTELMEYER | ZL4002 | 50,380 | 20 Series | 25 Series |



All manufacturers' names, numbers, symbols, and descriptions are used for reference purposes only. It is not implied that any part listed is the product of these manufacturers.

HENSLEY INDUSTRIES, INC.

2108 Joe Field Road
Dallas, Texas 75229
www.hensleyind.com
Phone 972-241-2321

CUSTOMER SERVICE

Phone 888-406-6262
Fax 888-241-3274

Copyright © 2004 Hensley Industries, Inc.
This publication is protected under the copyright laws of the United States.
Unauthorized duplication or distribution is prohibited.