



## INTEGRATED O-PILE SYSTEMS

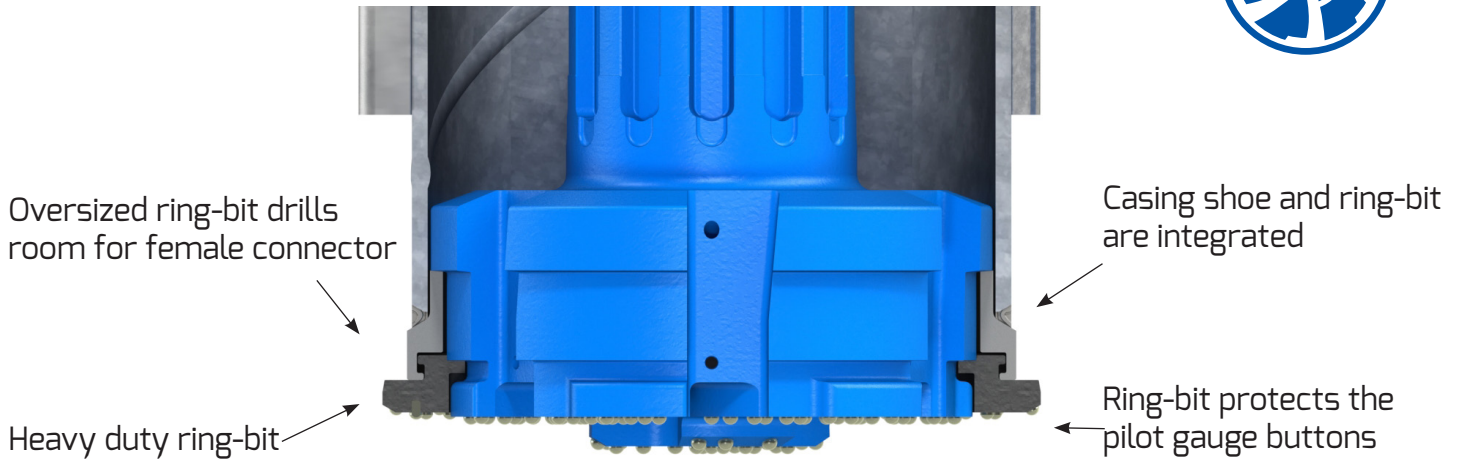
**INTEGRATED O-PILE RING-BIT SYSTEMS** are used to drill straight interlocked casings through boulders, rock layers, or into inclined bedrock. With this O-pile technique, one can build interlocked casing walls, roofs, and other structures for the construction industry. O-piles can also replace sheet piles and slurry walls in rocky ground conditions. The heavy-duty ring-bit is integrated in the casing shoe, which makes it safe to drill in loose ground and water.



Main **applications** for O-pile systems are:

1. O-pile walls
2. O-pile roofs
3. Cofferdams
4. Retaining walls
5. Watertight cut off walls

# INTEGRATED O-PILE SYSTEM DESIGN FEATURES



System is available from 219 to 1220 mm casings and for all major shank designs.

System product code	Casing OD		Max wall		Ring-bit ID		Ring-bit OD		Pilot bit OD	
	mm	inch	mm	Inch	mm	inch	mm	inch	mm	inch
XLI219-12.7-150	219.1	8.625"	12.7	0.5"	150	5.906"	279	10.984"	191	7.520"
XLI244-14.2-170	244.5	9.625"	14.2	0.559"	170	6.693"	304	11.969"	213	8.386"
XLI254-14.2-178	254	10"	14.2	0.559"	178	7.008"	314	12.362"	223	8.780"
XLI273-12.7-192	273	10.75"	12.7	0.5"	192	7.559"	333	13.110"	245	9.646"
XLI301-14.2-220	301.6	11.875"	14.2	0.559"	220	8.661"	361	14.213"	270	10.630"
XLI323-14.2-240	323.9	12.75"	14.2	0.559"	240	9.449"	383	15.079"	291	11.622"
XLI339-14.2-255	339.7	13.375"	14.2	0.559"	255	10.039"	399	15.709"	308	12.126"
XLI355-14.2-270	355.6	14"	14.2	0.559"	270	10.630"	415	16.339"	324	12.756"
XLI406-16-318	406.4	16"	16	0.625"	318	12.520"	466	18.346"	370	14.567"
XLI457-16-360	457.2	18"	16	0.625"	360	14.173"	517	20.354"	423	16.654"
XLI508-16-422	508	20"	16	0.625"	422	16.614"	565	22.244"	471	18.543"
XLI559-16-470	558.8	22"	16	0.625"	470	18.504"	619	24.370"	521	20.512"
<b>XLI610-16-502</b>	<b>609.6</b>	<b>24"</b>	<b>16</b>	<b>0.625"</b>	<b>502</b>	<b>19.764"</b>	<b>670</b>	<b>26.378"</b>	<b>572</b>	<b>22.520"</b>
XLI660-16-545	660.4	26"	16	0.625"	545	21.457"	720	28.346"	615	24.213"
XLI711-16-610	711.2	28"	16	0.625"	610	24.016"	771	30.354"	675	26.757"
XLI762-20-655	762	30"	20	0.787"	655	25.787"	822	32.362"	715	28.150"
XLI813-20-700	812.8	32"	20	0.787"	700	27.559"	873	34.370"	769	30.276"
XLI863-20-750	863.6	34"	20	0.787"	750	29.528"	923	36.339"	815	32.087"
XLI914-20-800	914.4	36"	20	0.787"	800	31.500"	974	38.346"	866	34.095"
XLI1016-20-880 *	1016	40"	20	0.787"	880	34.646"	1076	42.362"	966	38.094"
XLI1220-20-1080 *	1219.2	48"	20	0.787"	1080	42.520"	1280	50.394"	1168	45.984"

\*Large diameter system can be engineered based on the specific customer requirements

