

SPIRALFLUSH®



SOLITARY RING BIT SYSTEMS

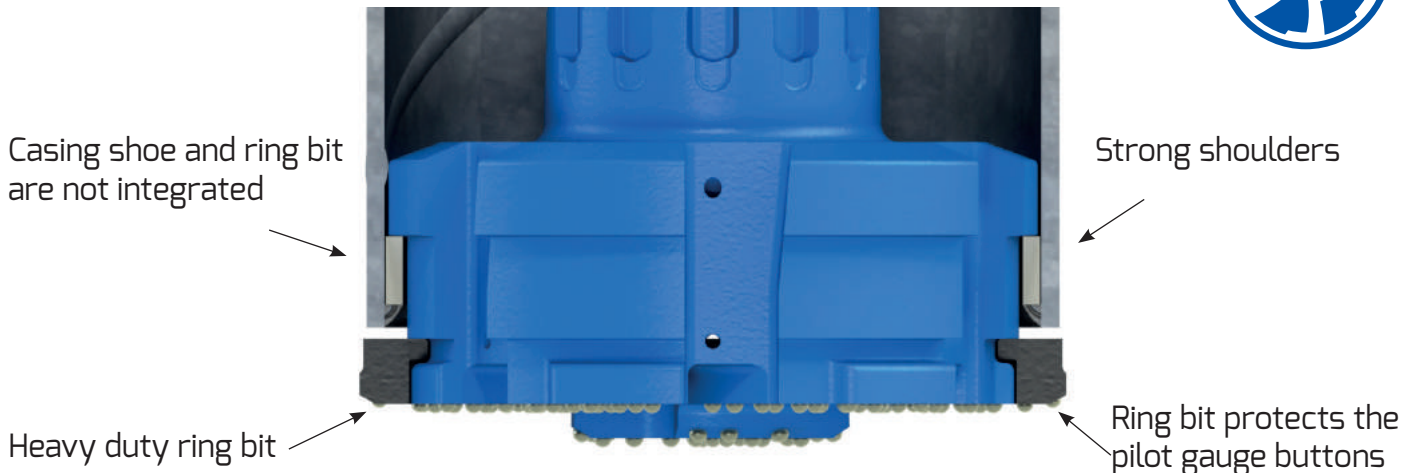
SOLITARY RING BIT SYSTEMS are designed for drilling end bearing piles to bed rock. System is designed to drill straight piles through boulders, rock layers and also into inclined bed rock. Heavy duty ring bit is not attached to casing shoe, which makes it most economical of the ring bit alternatives.



Main **applications** for solitary systems are:

1. End bearing piles including micro piling
2. Pilings with sacrificed casings, which have no large ID ring bit requirements
3. Slope stabilization
4. Pipe walls, king piles etc.

SOLITARY SYSTEM DESIGN FEATURES



System is available from 114 to 1524 mm casings and for all major shank designs.

System product code	Casing OD		Max wall		Ring bit ID		Ring bit OD		Pilot bit OD	
	mm	Inch	mm	Inch	mm	Inch	mm	Inch	mm	Inch
S114-8-68	114,3	4,5"	8	0.315"	68	2.677"	125	4.921"	96	3.780"
S127-10-75	127	5"	10	0.394"	75	2.953"	137	5.394"	105	4.134"
S140-10-86	139,7	5,5"	10	0.394"	86	3.386"	149	5.866"	119	4.685"
S152-10-96	152,4	6"	10	0.394"	96	3.780"	162	6.378"	130	5.118"
S159-10-103	158,8	6,25"	10	0.394"	103	4.055"	169	6.654"	137	5.394"
S168-12.7-106	168,3	6.625"	12,7	0.5"	106	4.173"	179	7.047"	141	5.551"
S178-12.7-116	177,8	7"	12,7	0.5"	116	4.567"	188	7.402"	152	5.984"
S194-12.7-125	193,7	7.625"	12,7	0.5"	125	4.921"	205	8.071"	166	6.535"
S219-12.7-150	219,1	8.625"	12,7	0.5"	150	5.906"	230	9.055"	191	7.520"
S244-14.2-162	244,5	9.625"	14,2	0.559"	162	6.378"	255	10.039"	213	8.386"
S254-14.2-172	254	10"	14,2	0.559"	172	6.772"	265	10.433"	223	8.780"
S273-12.7-192	273	10.75"	12,7	0.5"	192	7.559"	290	11.417"	245	9.646"
S301-14.2-220	301,6	11.875"	14,2	0.559"	220	8.661"	312	12.283"	270	10.630"
S323-14.2-240	323,9	12.75"	14,2	0.559"	240	9.449"	335	13.189"	291	11.622"
S339-14.2-255	339,7	13.375"	14,2	0.559"	255	10.039"	350	13.780"	308	12.126"
S355-14.2-270	355,6	14"	14,2	0.559"	270	10.630"	367	14.449"	324	12.756"
S406-16-318	406,4	16"	16	0.625"	318	12.520"	418	16.457"	370	14.567"
S457-16-360	457,2	18"	16	0.625"	360	14.173"	469	18.465"	423	16.654"
S508-16-422	508	20"	16	0.625"	422	16.614"	520	20.472"	471	18.543"
S559-16-470	558,8	22"	16	0.625"	470	18.504"	571	22.480"	521	20.512"
S610-16-502	609,6	24"	16	0.625"	502	19.764"	622	24.488"	572	22.520"
S660-16-545	660,4	26"	16	0.625"	545	21.457"	675	26.575"	615	24.213"
S711-16-610	711,2	28"	16	0.625"	610	24.016"	735	28.937"	675	26.757"
S762-20-655	762	30"	20	0.787"	655	25.787"	785	30.906"	715	28.150"
S813-20-700	812,8	32"	20	0.787"	700	27.559"	830	32.677"	769	30.276"
S863-20-750	863,6	34"	20	0.787"	750	29.528"	880	34.646"	815	32.087"
S914-20-800	914,4	36"	20	0.787"	800	31.500"	930	36.614"	866	34.213"
S1016-20-880	1016	40"	20	0.787"	880	34.646"	1032	40.630"	966	38.094"
S1066-20-930	1066,8	42"	20	0.787"	930	36.614"	1086	42.756"	1014	39.921"
S1220-20-1080*	1219,2	48"	20	0.787"	1080	42.520"	1240	48.819"	1168	45.984"
S1321-22-1160 *	1320,8	52"	22	0.866"	1150	45.276"	1344	52.913"	1247	49.094"
S1422-22-1250 *	1422,4	56"	22	0.866"	1250	49.213"	1446	56.929"	1348	53.071"
S1524-22-1340*	1524	60"	22	0.866"	1340	52.756"	1548	60.945"	1462	57.559"

*Large diameter systems can be engineered based on the specific customer requirements