

SPIRALFLUSH®



LARGE ID RING BIT SYSTEMS

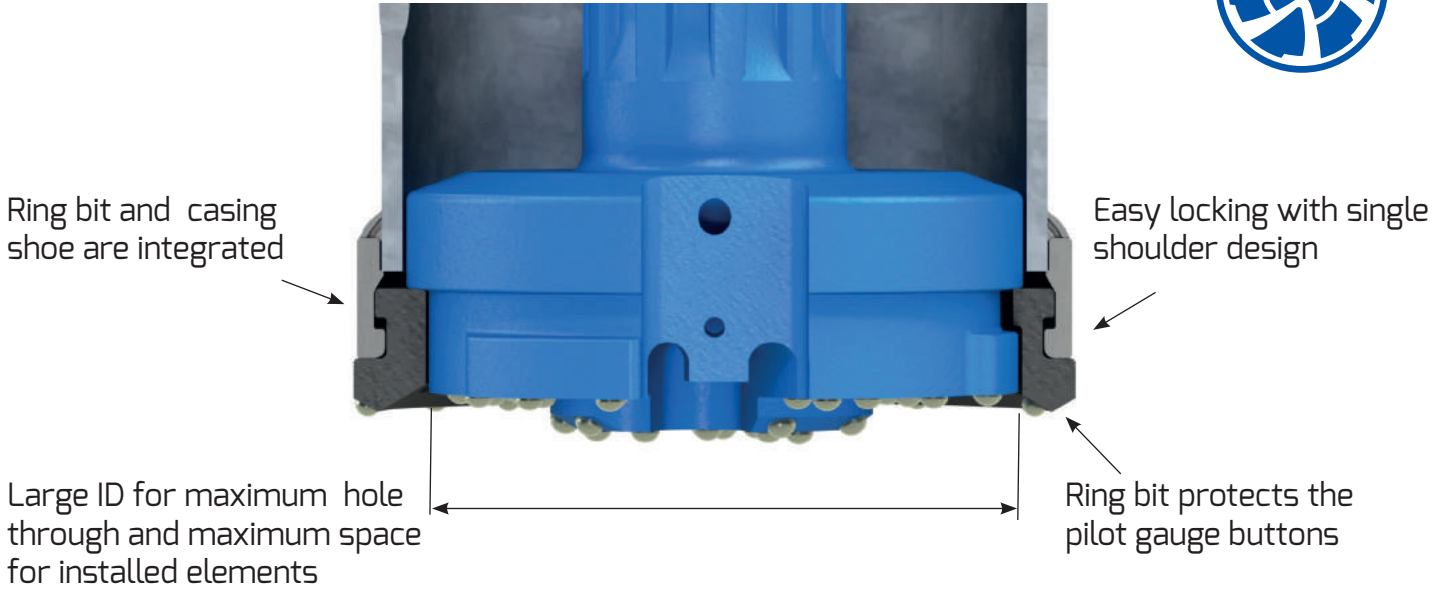
LARGE ID RING BIT SYSTEMS are used with sacrificed casings when there is a requirement to continue the hole after casing is set. Such casings are left in ground due to economical, corrosion protection or sealing reasons, or because of ground cavities.



Main **applications** for large ID ring bit systems are:

1. Piling with sacrificed casings and rock socket
2. Energy/water wells
3. Surface casings (sealing, dewatering)

LARGE ID SYSTEM DESIGN FEATURES



System is available from 114 to 660 mm casings and for all major shank designs.

System product code	Casing OD		Max wall		Ring bit ID		Ring bit OD		Pilot bit OD	
	mm	inch	mm	Inch	mm	inch	mm	inch	mm	inch
I114-5.5-91	114,3	4.5"	5,5	0.217"	91	3.583"	133	5.236"	101.5	3.996
I127-5.5-103	127	5"	5,5	0.217"	103	4.055"	147	5.787"	114	4.488"
I140-5.5-116	139,7	5.5"	5,5	0.217"	116	4.567"	160	6.299"	127	5"
HDI140-5.5-116 *	139,7	5.5"	5,5	0.217"	116	4.567"	170	6.693"	127	5"
I159-6-134	158,8	6.25"	6	0.236"	134	5.276"	179	7.047"	145	5.709"
I168-5.5-141	168,3	6.626"	5,5	0.217"	141	5.551"	189	7.441"	152	5.984"
HDI168-5.5-141 *	168,3	6.626"	5,5	0.217"	141	5.551"	199	7.835"	152	5.984"
I178-7-153	177,8	7"	7	0.276"	153	6.024"	204	8.031"	162	6.378"
I194-6-165	193,7	7.626"	6	0.236"	165	6.496"	224	8.819"	179	7.047"
I219-6.5-190	219,1	8.626"	6,5	0.265"	190	7.480"	245	9.646"	203	7.992"
I244-8-212	244,5	9.625"	8	0.315"	212	8.346"	270	10.630"	225	8.858"
I254-8-222	254	10"	8	0.315"	222	8.740"	280	11.024"	235	9.252"
I273-8-240	273	10.748"	8	0.315"	240	9.449"	299	11.772"	254	10"
I301-10-260	301,6	11.875"	10	0.394"	260	10.235"	327	12.874"	279	10.984"
I323-10-280	323,9	12.752"	10	0.394"	280	11.024"	350	13.780"	298	11.732"
I339-10-295	339,7	13.375"	10	0.394"	295	11.614"	366	14.409"	316	12.441"
I355-10-211	355,6	14"	10	0.394"	311	12.244"	383	15.079"	332	13.071"
I406-10-360	406,4	16"	10	0.394"	360	14.173"	436	17.165"	382	15.039"
I457-10-405	457,2	18"	10	0.394"	405	15.945"	487	19.173"	432	17.008"
I508-12.7-450	508	20"	12,7	0.5"	450	17.717"	538	21.181"	478	18.819"
I559-12.7-500	558,8	22"	12,7	0.5"	500	19.685"	589	23.189"	528	20.787"
I610-12.7-555	609,6	24"	12,7	0.5"	555	21.850"	640	25.197"	580	22.835"
I660-12.7-600	660,4	26"	12,7	0.5"	600	23.622"	690	27.165"	629	24.764"
I711-12.7-641	711,2	28"	12,7	0.5"	641	25.236"	741	29.173"	679	26.732"
I762-12.7-690	762	30"	12,7	0.5"	690	27.1	794	31.260"	729	28.701"
I813-12.7-735	812,8	34"	12,7	0.5"	735	28.937	845	33.268"	780	30.709"

* Heavy duty systems for deep casing drilling. Special design with large ID.

**Large diameter system can be engineered based on the specific customer requirements(660-1524mm)