



DRIVES

LET'S BR  
BREAK  
GROUND  
TOGETHER



[www.pengoattachments.com](http://www.pengoattachments.com) | 800.599.0211

**powerful construction attachments**

Revolution Drives and Excavator Augers



power pack



compact  
skid-steer



mini  
excavator



skid-steer



mini digger  
derrick



digger  
derrick



backhoe



excavator

## DRIVE SELECTION GUIDE

PENGO's Revolution Series Drives are designed to outfit several different types of equipment. This selection guide will assist you in selection the right model for your equipment type.

### DRILLING DRIVE "D" SERIES

Designed for Drilling Applications

Part No.	Model	Connection	Speed Config.	Max Flow (gpm)	Max Pressure (psi)	Torque Low (ft/lbs)	Torque High (ft/lbs)	Speed (rpm)	Recommended Prime Mover							Excavator Size (metric tons)	
									Power Pack	Cmpt Digger Derrick	Compt Excavator	Skid Steer Loader	Digger Derrick	Backhoe (TLB)	Excavator		
610171	DS-2	H-200	Sngl	25	3000	0	2356	65		■	■	■					2T - 3T
610267	DS-2	R-256	Sngl	25	3000	0	2356	65		■	■	■					2T - 3T
610172	DS-3	H-200	Sngl	25	3000	0	3859	40		■	■	■					2T - 4T
610173	DT-5	H-250	Two	40	3000	2465	4930	50 / 100		■	■	■		■			5T - 8T
610174	DT-15	H-300	Two	50	3000	7738	15478	20 / 40					■	■	■		17T - 25T
610442	DV-20	H-300	Var	60	4000	13337	22507	24 / 40						■	■		17T - 25T
610384	DV-30	S-400	Var	60	4000	13048	31661	18 / 41							■		20T - 30T
610385	DV-40	130mm	Var	60	4000	15683	38056	14 / 34							■		20T - 30T

### ANCHOR DRIVE "R" SERIES

Designed for Anchor Installation Applications

Part No.	Model	Connection	Speed Config.	Max Flow (gpm)	Max Pressure (psi)	Torque Low (ft/lbs)	Torque High (ft/lbs)	Speed (rpm)	Recommended Prime Mover							Excavator Size (metric tons)	
									Power Pack	Cmpt Digger Derrick	Compt Excavator	Skid Steer Loader	Digger Derrick	Backhoe (TLB)	Excavator		
610206	RS-7X	H-200	Sngl	25	2500	0	7512	18	■								NA
610207	RS-7	H-200	Sngl	25	2500	0	7512	18		■	■	■					5T - 8T
610057	RS-12	H-250	Sngl	40	3000	0	13014	18			■	■	■	■			11T - 17T
610058	RT-9	H-250	Two	50	3000	4925	9850	31 / 63			■	■	■	■			8T - 13T
610059	RT-12	H-250	Two	50	3000	5753	12330	25 / 54			■	■	■	■			11T - 17T
610060	RT-20	H-300	Two	50	3000	11331	22662	13 / 25						■	■		17T - 25T
610061	RT-30	S-400	Two	50	3000	15234	30470	9 / 19							■		20T - 30T
610480	RT-40	130mm	Two	50	3000	19757	39514	7 / 15							■		20T - 30T
610063	RV-70	150mm	Var	150	3500	34547	69126	17 / 33							■		30T - 40T
610064	RV-100	177mm	Var	150	3500	55209	110418	10 / 20							■		60T - 90T
610065	RV-140	177mm	Var	150	3500	70326	140652	8 / 16							■		90T
610547	RV-200	200mm	Var	150	3500	105896	211794	5 / 10							■		90T

CONNECTIONS: H-200 = 2" Hex, R-256 = 2 9/16" Round, H-250 = 2 1/2" Hex, H-300 = 3" Hex, and S-400 = 4" Square, MM Hubs are Square



# REVOLUTION SERIES™

## FEATURES

- o Large highly efficient gearboxes, designed specifically for long duty cycles.
- o Standard cross-over pressure relief systems to protect the motor from pressure spikes.
- o Two piece bail housing design allows top section to be removed for easy motor access.
- o Single and Two speed models do not require drain lines.
- o All models are designed to be outfitted with PENGO's TruLink torque monitoring system.
- o All two speed models are equipped with a pressure activated auto shift feature.
- o **Accurate torque and speed specifications.** PENGO ensures that all torque and speed specifications have maximum efficiencies applied to provide the most accurate specifications possible. None of the specifications are listed at 100% theoretical values.

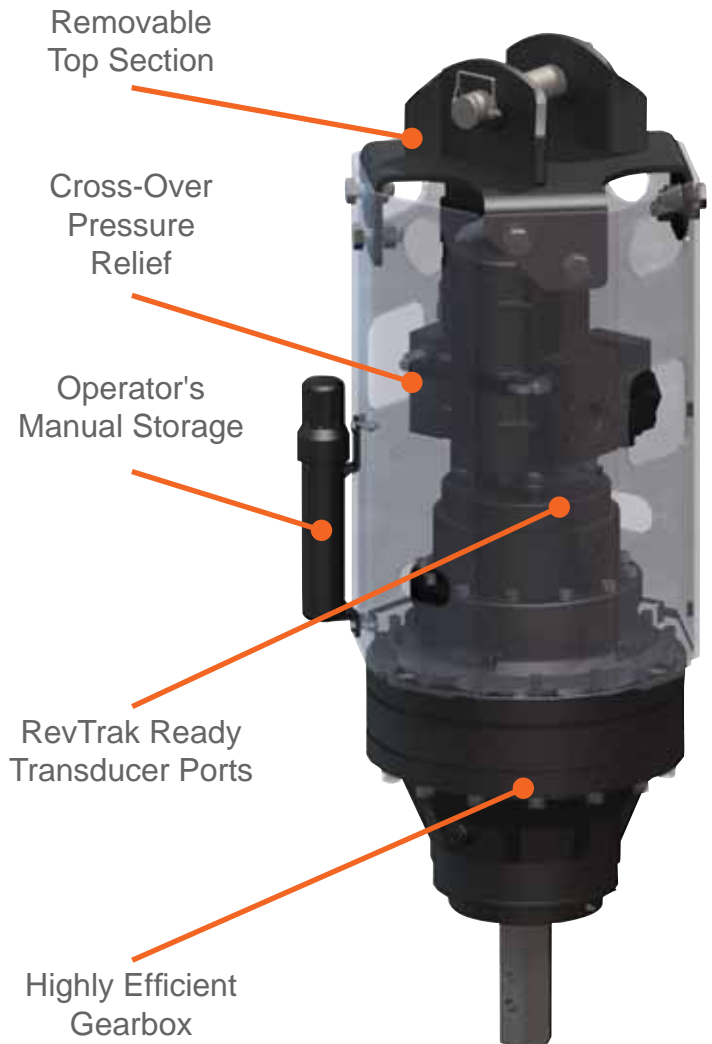
## COMPLETE SYSTEM

PENGO offers a complete Drive package which includes:

- o Mounting Brackets for:
  - Skid Loaders
  - Backhoe Loaders
  - Excavators (Compact & Large)
- o Anchor drive tool adapters.
- o RevTrak digital torque monitoring system.

## APPLICATIONS

- o **Anchoring:** The RS, RT and RV models are designed specifically for the anchor installation industry. The high torque and slow speed configuration is ideal for anchor applications.
- o **Drilling:** The DS, DT and DV series are ideal for various types of drilling applications. Torque ranges from 2,500 ft/lb to 40,000 ft/lb.





## MS-100 | SINGLE SPEED

### FEATURES

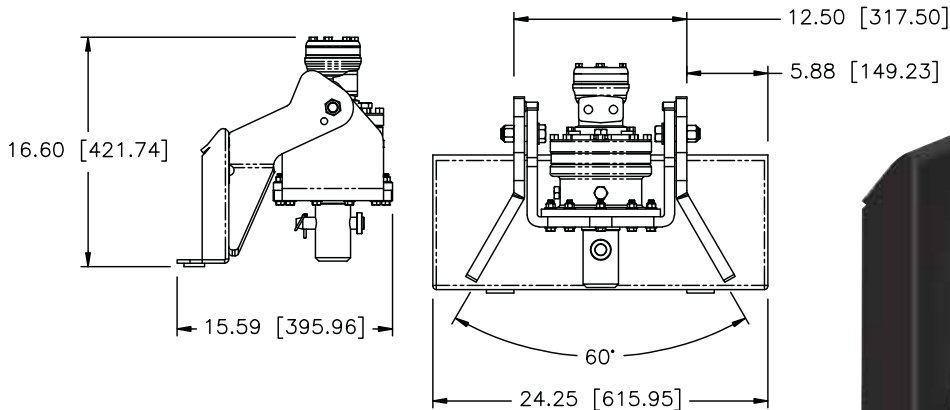
- Compact Size
- Universal Compact Skid Mount Included
- Hydraulic Hoses Included



PART NO.	MODEL	CONNECTION	SWIVEL TYPE
700107	MS-100	R-256	Single
700302	MS-100	R-256	Double
700152	MS-100	H-200	Single
700312	MS-100	H-200	Double

### ACCESSORIES

- 700215 Double Swivel Bracket Assy  
151605 Pin Assy 7/8"



TOTAL UNIT WEIGHT	146 LBS / 66 Kg
HYDRAULIC MOTOR INFORMATION	
Displacement	6.1 cu/in (100cc)
Motor Type	Single Speed Bi-Directional
Motor Output Shaft	7/8" Spline 14T
Motor Mount	SAE - A 2 Bolt
Motor Ports	1/2" BSP
Cross Over Pressure Relief	Not Equipped
PLANETARY GEARBOX INFORMATION	
Gearbox Type	Planetary Single Stage
Reduction Ratio	5.77:1
Output Shaft	2" Hex or 2-9/16" Round
Oil Capacity	.31 Gallons
Oil Type	SAE 80W90 GL-5

REFERENCE TORQUE CHART		
Pressure PSI (Bar)	Torque (ft/lbs)	
1600 (110)	613	
1800 (124)	689	
2000 (137)	766	
2200 (151)	842	
2400 (165)	919	
2600 (179)	995	
2800 (193)	1073	
3000 (206)	1149	

REFERENCE SPEED CHART		
Flow GPM (Liter)	Speed (rpm)	
10 (38)	54	
15 (56)	80	
20 (75)	108	
25 (94)	134	

Note: Revolution Drive units are not recommended for DTH and will not be covered under warranty for damage due to down the hole drilling.

Output speed and torque specifications are NOT listed at 100% efficiency. Maximum efficiencies have been applied to the torque and speed charts according to the manufacturer's recommendations. Speed and torque output are dependent on the overall system efficiencies associated with the prime movers hydraulic system. When the purchaser is determining criteria for specific applications please contact Pengo. Pengo has made every attempt to present accurate and suitable information published in this document. This document should be used for information and comparative purposes only. When application-specific information is required, please contact Pengo.



## MS-125 | SINGLE SPEED

### FEATURES

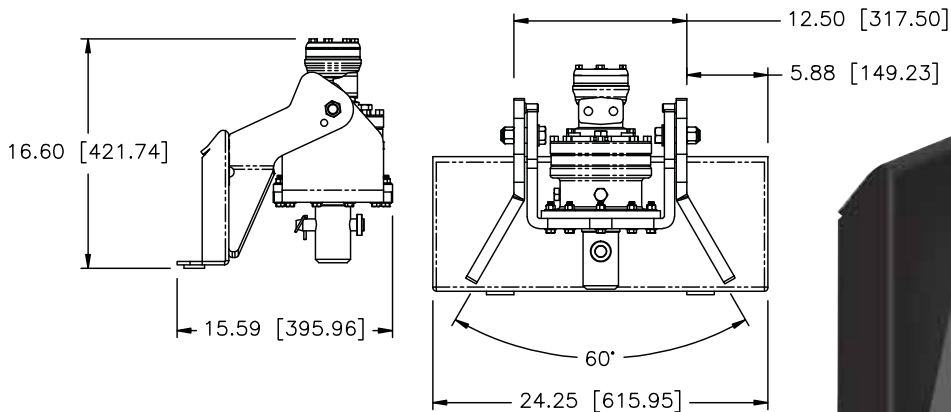
- Compact Size
- Universal Compact Skid Mount Included
- Hydraulic Hoses Included



PART NO.	MODEL	CONNECTION	SWIVEL TYPE
700106	MS-125	R-256	Single
700303	MS-125	R-256	Double
700153	MS-125	H-200	Single
700313	MS-125	H-200	Double

### ACCESSORIES

- 700215 Double Swivel Bracket Assy  
151605 Pin Assy 7/8"



TOTAL UNIT WEIGHT	146 LBS / 66 Kg
HYDRAULIC MOTOR INFORMATION	
Displacement	7.3 cu/in (120cc)
Motor Type	Single Speed Bi-Directional
Motor Output Shaft	7/8" Spline 14T
Motor Mount	SAE - A 2 Bolt
Motor Ports	7/8" - 14 O-Ring
Cross Over Pressure Relief	Not Equipped
PLANETARY GEARBOX INFORMATION	
Gearbox Type	Planetary Single Stage
Reduction Ratio	5.77:1
Output Shaft	2" Hex or 2-9/16" Round
Oil Capacity	.31 Gallons
Oil Type	SAE 80W90 GL-5

REFERENCE TORQUE CHART		
Pressure PSI (Bar)	Torque (ft/lbs)	
1600 (110)	736	
1800 (124)	827	
2000 (137)	919	
2200 (151)	1011	
2400 (165)	1103	
2600 (179)	1195	
2800 (193)	1287	
3000 (206)	1378	

REFERENCE SPEED CHART		
Flow GPM (Liter)	Speed (rpm)	
10 (38)	45	
15 (56)	67	
20 (75)	90	
25 (94)	112	

Note: Revolution Drive units are not recommended for DTH and will not be covered under warranty for damage due to down the hole drilling.

Output speed and torque specifications are NOT listed at 100% efficiency. Maximum efficiencies have been applied to the torque and speed charts according to the manufacturer's recommendations. Speed and torque output are dependent on the overall system efficiencies associated with the prime movers hydraulic system. When the purchaser is determining criteria for specific applications please contact Pengo. Pengo has made every attempt to present accurate and suitable information published in this document. This document should be used for information and comparative purposes only. When application-specific information is required, please contact Pengo.

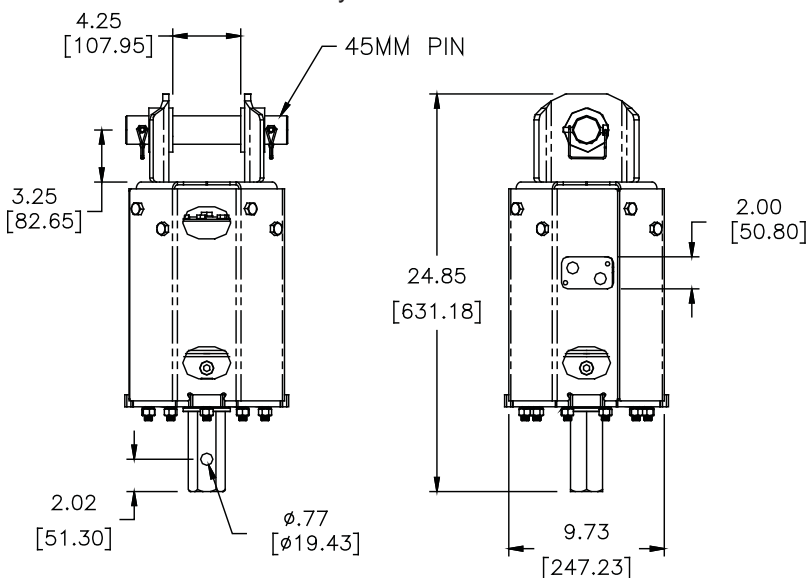


## DS-2 | SINGLE SPEED

PART NO.	APPLICATION	CONNECTION	EXCAVATOR
610171	DRILLING	H-200	2T-3T
610267	DRILLING	R-256	2T-3T

### ACCESSORIES

661111	Universal Mounting Plate for Skid-Steer
661318	Long Reach Universal Mount for Skid-Steer
615000	TruLink Class 1 4" Monitor
615002	TruLink Class 1 8" Monitor
660555	Link Arm 45mm
660558	Pin Assembly 45mm



TOTAL UNIT WEIGHT	115 LBS / 52 Kg
HYDRAULIC MOTOR INFORMATION	
Displacement	12.5 cu/in (205cc)
Motor Type	Single Speed Bi-Directional
Motor Output Shaft	7/8" Spline 14T
Motor Mount	SAE - A 2 Bolt
Motor Ports	1/2" BSP
Cross Over Pressure Relief	Not Equipped
PLANETARY GEARBOX INFORMATION	
Gearbox Type	Planetary Single Stage
Reduction Ratio	5.77:1
Output Shaft	2" Hex or 2-9/16" Round
Oil Capacity	.31 Gallons
Oil Type	SAE 80W90 GL-5
Shaft Pull Out (lbs.)	3,000 lbs.

REFERENCE TORQUE CHART		
Pressure PSI (Bar)	Torque (ft/lbs)	
1600 (110)	1256	
1800 (124)	1413	
2000 (137)	1570	
2200 (151)	1728	
2400 (165)	1884	
2600 (179)	2042	
2800 (193)	2198	
3000 (206)	2356	

REFERENCE SPEED CHART		
Flow GPM (Liter)	Speed (rpm)	
10 (38)	26	
15 (56)	39	
20 (75)	52	
25 (94)	66	

Note: Revolution Drive units are not recommended for DTH and will not be covered under warranty for damage due to down the hole drilling.

Output speed and torque specifications are NOT listed at 100% efficiency. Maximum efficiencies have been applied to the torque and speed charts according to the manufacturer's recommendations. Speed and torque output are dependent on the overall system efficiencies associated with the prime movers hydraulic system. When the purchaser is determining criteria for specific applications please contact Pengo. Pengo has made every attempt to present accurate and suitable information published in this document. This document should be used for information and comparative purposes only. When application-specific information is required, please contact Pengo.

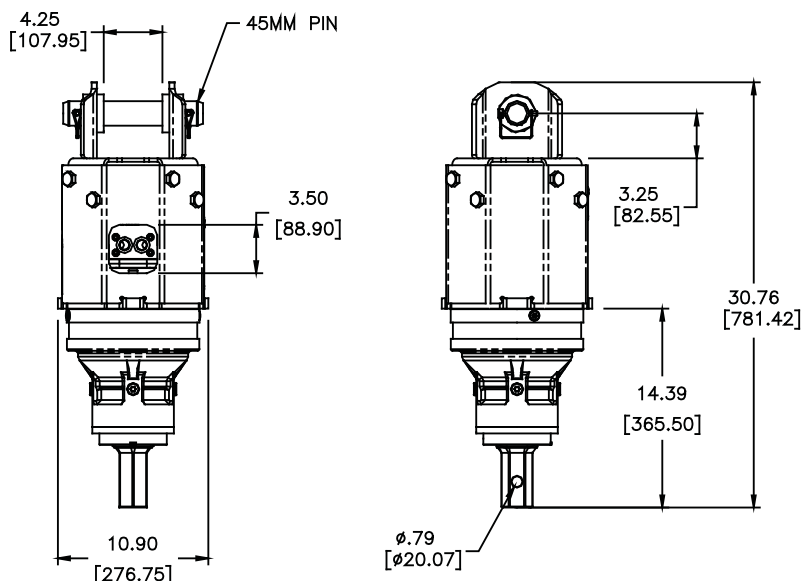


## DS-3 | SINGLE SPEED

PART NO.	APPLICATION	CONNECTION	EXCAVATOR
610172	DRILLING	H-200	2T-4T

### ACCESSORIES

661111	Universal Mounting Plate for Skid-Steer
661318	Long Reach Universal Mount for Skid-Steer
615000	TruLink Class 1 4" Monitor
615002	TruLink Class 1 8" Monitor
660555	Link Arm 45mm
660558	Pin Assembly 45mm



TOTAL UNIT WEIGHT	170 LBS / 77 Kg
HYDRAULIC MOTOR INFORMATION	
Displacement	8.0 cu/in (131cc)
Motor Type	Single Speed Bi-Directional
Motor Output Shaft	1" 6-B Spline
Motor Mount	SAE - A 2 Bolt
Motor Ports	7/8" - 14 O-Ring
Cross Over Pressure Relief	Not Equipped
PLANETARY GEARBOX INFORMATION	
Gearbox Type	Planetary Two Stage
Reduction Ratio	14.79:1
Output Shaft	2" Hex
Oil Capacity	.87 Gallons
Oil Type	SAE 80W90 GL-5
Shaft Pull Out (lbs.)	7,000 lbs.

REFERENCE TORQUE CHART		
Pressure PSI (Bar)	Torque (ft/lbs)	
1600 (110)	2058	
1800 (124)	2315	
2000 (137)	2572	
2200 (151)	2830	
2400 (165)	3087	
2600 (179)	3344	
2800 (193)	3601	
3000 (206)	3859	

REFERENCE SPEED CHART		
Flow GPM (Liter)	Speed (rpm)	
10 (38)	16	
15 (56)	24	
20 (75)	32	
25 (94)	40	

Note: Revolution Drive units are not recommended for DTH and will not be covered under warranty for damage due to down the hole drilling.

Output speed and torque specifications are NOT listed at 100% efficiency. Maximum efficiencies have been applied to the torque and speed charts according to the manufacturer's recommendations. Speed and torque output are dependent on the overall system efficiencies associated with the prime movers hydraulic system. When the purchaser is determining criteria for specific applications please contact Pengo. Pengo has made every attempt to present accurate and suitable information published in this document. This document should be used for information and comparative purposes only. When application-specific information is required, please contact Pengo.

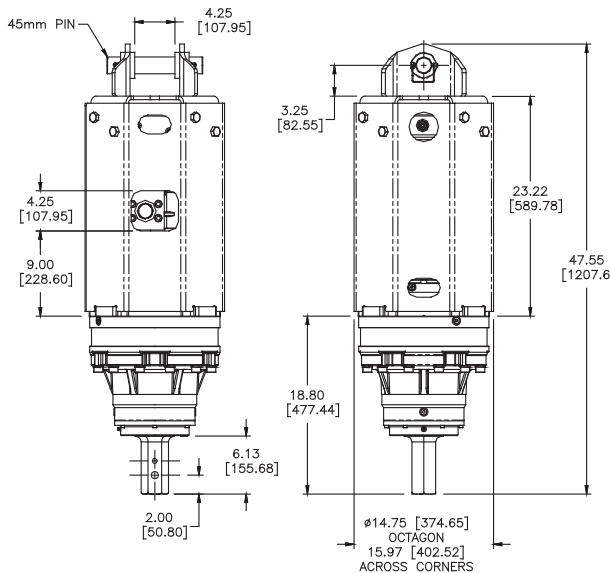


## DT-5 | TWO SPEED

PART NO.	APPLICATION	CONNECTION	EXCAVATOR
610173	DRILLING	H-250	5T-8T

### ACCESSORIES

661111	Universal Mounting Plate for Skid-Steer
661318	Long Reach Universal Mount for Skid-Steer
615000	TruLink Class 1 4" Monitor
615002	TruLink Class 1 8" Monitor
660555	Link Arm 45mm
660558	Pin Assembly 45mm



<b>TOTAL UNIT WEIGHT</b>	645 LBS / 292 Kg
<b>HYDRAULIC MOTOR INFORMATION</b>	
Displacement	2.98 cu/in (97.6cc)
Motor Type	Two Speed Bi-Directional
Motor Output Shaft	1-1/4" Spline 14T
Motor Mount	SAE - C 4 Bolt
Motor Ports	1-5/8" - 12 UN-2B
Cross Over Pressure Relief	Set @ 3100 psi
<b>PLANETARY GEARBOX INFORMATION</b>	
Gearbox Type	Planetary Two Stage
Reduction Ratio	25.36:1
Output Shaft	2-1/2" Hex
Oil Capacity	1.7 Gallons
Oil Type	SAE 80W90 GL-5
Shaft Pull Out (lbs.)	22,500 lbs.

### TWO SPEED MODELS MUST HAVE A MINIMUM OF 20GPM.

Note: Revolution Drive units are not recommended for DTH and will not be covered under warranty for damage due to down the hole drilling.

Output speed and torque specifications are NOT listed at 100% efficiency. Maximum efficiencies have been applied to the torque and speed charts according to the manufacturer's recommendations. Speed and torque output are dependent on the overall system efficiencies associated with the prime movers hydraulic system. When the purchaser is determining criteria for specific applications please contact Pengo. Pengo has made every attempt to present accurate and suitable information published in this document. This document should be used for information and comparative purposes only. When application-specific information is required, please contact Pengo.

REFERENCE TORQUE CHART		
Pressure PSI (Bar)	High Torque (ft/lbs)	Low Torque (ft/lbs)
1600 (110)	2629	1314
1800 (124)	2958	1478
2000 (137)	3287	1643
2200 (151)	3615	1807
2400 (165)	3943	1971
2600 (179)	4272	2136
2800 (193)	4601	2300
3000 (206)	4930	2465

REFERENCE SPEED CHART		
Flow GPM (Liter)	Low Speed (rpm)	High Speed (rpm)
20 (75)	25	50
25 (95)	31	63
30 (113)	38	75
35 (132)	44	88
40 (151)	50	100



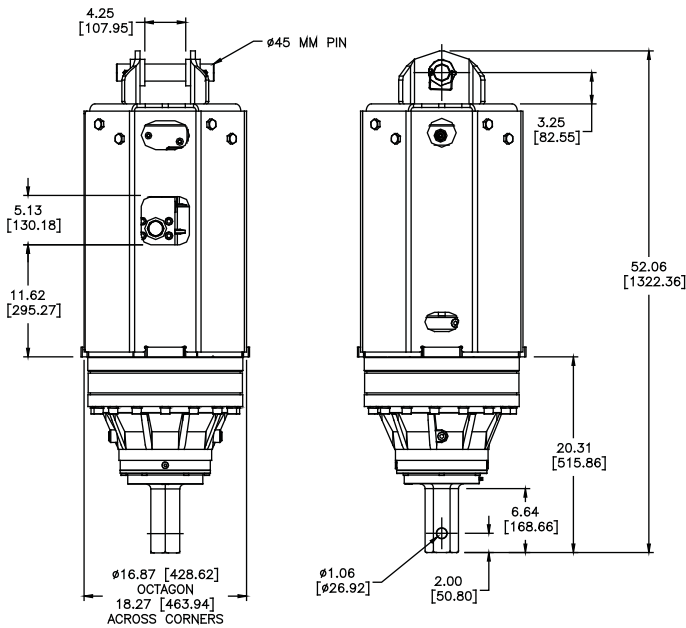


## DT-15 | TWO SPEED

PART NO.	APPLICATION	CONNECTION	EXCAVATOR
610174	DRILLING	H-300	17T-25T

### ACCESSORIES

615000	TruLink Class 1 4" Monitor
615002	TruLink Class 1 8" Monitor
660555	Link Arm 45mm
660558	Pin Assembly 45mm



<b>TOTAL UNIT WEIGHT</b>	825 LBS / 374 Kg
<b>HYDRAULIC MOTOR INFORMATION</b>	
Displacement	17.8 cu/in (293cc)
Motor Type	Two Speed Bi-Directional
Motor Output Shaft	1-1/4" Spline 14T
Motor Mount	SAE - C 4 Bolt
Motor Ports	1-5/8" - 12 UN-2B
Cross Over Pressure Relief	Set @ 3100 psi
<b>PLANETARY GEARBOX INFORMATION</b>	
Gearbox Type	Planetary Two Stage
Reduction Ratio	26.52:1
Output Shaft	3" Hex
Oil Capacity	2.4 Gallons
Oil Type	SAE 80W90 GL-5
Shaft Pull Out (lbs.)	22,500 lbs.

**TWO SPEED MODELS MUST HAVE A MINIMUM OF 20GPM.**

Note: Revolution Drive units are not recommended for DTH and will not be covered under warranty for damage due to down the hole drilling.

Output speed and torque specifications are NOT listed at 100% efficiency. Maximum efficiencies have been applied to the torque and speed charts according to the manufacturer's recommendations. Speed and torque output are dependent on the overall system efficiencies associated with the prime movers hydraulic system. When the purchaser is determining criteria for specific applications please contact Pengo. Pengo has made every attempt to present accurate and suitable information published in this document. This document should be used for information and comparative purposes only. When application-specific information is required, please contact Pengo.

REFERENCE TORQUE CHART		
Pressure PSI (Bar)	High Torque (ft/lbs)	Low Torque (ft/lbs)
1600 (110)	8254	4127
1800 (124)	9287	4643
2000 (137)	10318	5159
2200 (151)	11350	5674
2400 (165)	12382	6191
2600 (179)	13414	9707
2800 (193)	14445	7223
3000 (206)	15478	7738

REFERENCE SPEED CHART		
Flow GPM (Liter)	Low Speed (rpm)	High Speed (rpm)
20 (75)	8	16
30 (113)	12	24
40 (151)	16	32
50 (190)	20	40

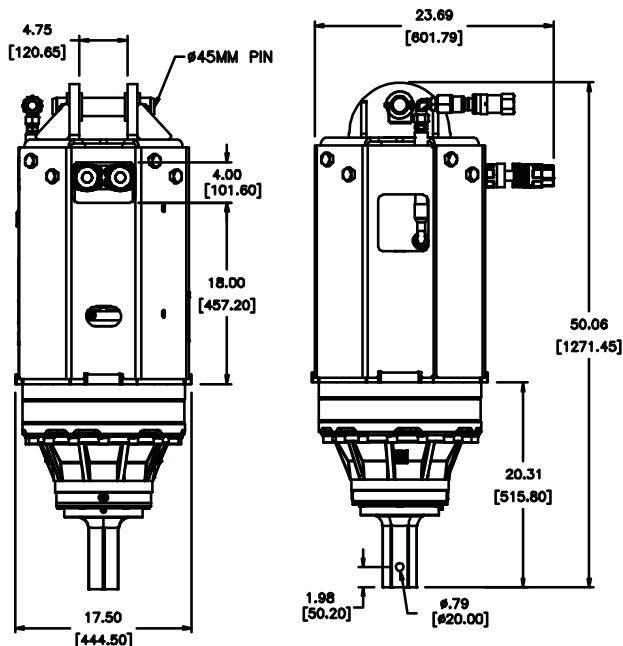


## DV-20 | VARIABLE SPEED

PART NO.	APPLICATION	CONNECTION	EXCAVATOR
610442	DRILLING	H-300	20T-30T

### ACCESSORIES

615000	TruLink Class 1 4" Monitor
615002	TruLink Class 1 8" Monitor
660555	Link Arm 45mm
660558	Pin Assembly 45mm



<b>TOTAL UNIT WEIGHT</b>	880 LBS / 400 Kg
<b>HYDRAULIC MOTOR INFORMATION</b>	
Displacement	8.25 cu/in (135cc)
Motor Type	Variable Speed Bi-Directional
Motor Output Shaft	8/16 Spline 13T
Motor Mount	SAE - D 2 Bolt
Motor Ports	Radial (Quick Coupler)
Cross Over Pressure Relief	None
<b>PLANETARY GEARBOX INFORMATION</b>	
Gearbox Type	Planetary Three Stage
Reduction Ratio	60.56:1
Output Shaft	3" Hex
Oil Capacity	2.6 Gallons
Oil Type	SAE 80W90 GL-5
Shaft Pull Out (lbs.)	45,000 lbs.

### VARIABLE SPEED MODELS MUST HAVE A Drain LINE.

Note: Revolution Drive units are not recommended for DTH and will not be covered under warranty for damage due to down the hole drilling.

Output speed and torque specifications are NOT listed at 100% efficiency. Maximum efficiencies have been applied to the torque and speed charts according to the manufacturer's recommendations. Speed and torque output are dependent on the overall system efficiencies associated with the prime movers hydraulic system. When the purchaser is determining criteria for specific applications please contact Pengo. Pengo has made every attempt to present accurate and suitable information published in this document. This document should be used for information and comparative purposes only. When application-specific information is required, please contact Pengo.

REFERENCE TORQUE CHART		
Pressure PSI (Bar)	High Torque (ft/lbs)	Low Torque (ft/lbs)
2600 (179)	14629	8669
2800 (193)	15755	9336
3000 (206)	16880	10003
3200 (220)	18006	10670
3400 (234)	19131	11336
3600 (248)	20256	12004
3800 (262)	21382	12671
4000 (275)	22507	13337

REFERENCE SPEED CHART		
Flow GPM (Liter)	Low Spd (rpm)	High Spd (rpm)
40 (150)	16	27
45 (169)	18	30
50 (188)	20	33
55 (206)	22	37
60 (225)	24	40

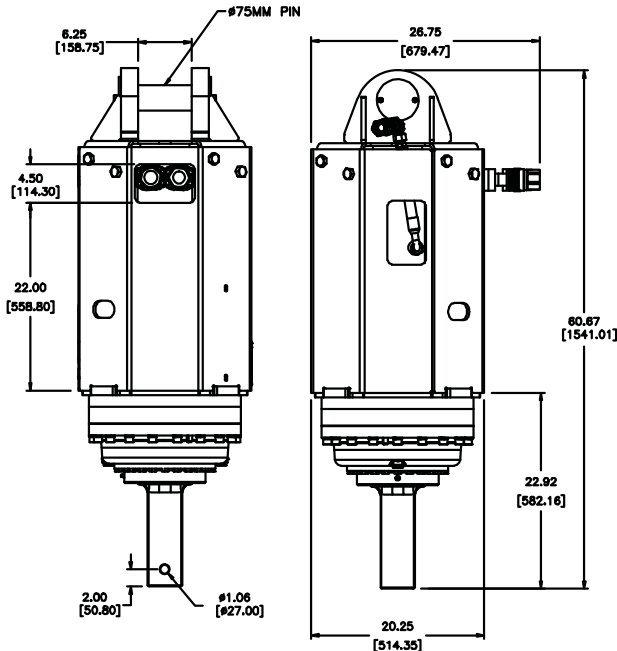


## DV-30 | VARIABLE SPEED

PART NO.	APPLICATION	CONNECTION	EXCAVATOR
610384	DRILLING	S-400	20T-30T

### ACCESSORIES

615001	TruLink Class 2 4" Monitor
615003	TruLink Class 2 8" Monitor
610202	Link Arm 75mm
660554	Pin Assembly 75mm



TOTAL UNIT WEIGHT	1250 LBS / 566 Kg
HYDRAULIC MOTOR INFORMATION	
Displacement	10.06 cu/in (165cc)
Motor Type	Variable Speed Bi-Directional
Motor Output Shaft	1-1/4" Spline 13T
Motor Mount	SAE - D 2 Bolt
Motor Ports	Radial (Quick Coupler)
Cross Over Pressure Relief	None
PLANETARY GEARBOX INFORMATION	
Gearbox Type	Planetary Three Stage
Reduction Ratio	69.7:1
Output Shaft	4" Square
Oil Capacity	3.1 Gallons
Oil Type	SAE 80W90 GL-5
Shaft Pull Out (lbs.)	60,000 lbs.

REFERENCE TORQUE CHART		
Pressure PSI (Bar)	High Torque (ft/lbs)	Low Torque (ft/lbs)
2600 (179)	20579	8481
2800 (193)	22162	9133
3000 (206)	23746	9786
3200 (220)	25328	10438
3400 (234)	26912	11091
3600 (248)	28495	11743
3800 (262)	30078	12396
4000 (275)	31661	13048

REFERENCE SPEED CHART		
Flow GPM (Liter)	Low Spd (rpm)	High Spd (rpm)
40 (150)	11	27
45 (169)	13	31
50 (188)	14	34
55 (206)	15	37
60 (225)	17	41

### VARIABLE SPEED MODELS MUST HAVE A Drain LINE.

Note: Revolution Drive units are not recommended for DTH and will not be covered under warranty for damage due to down the hole drilling.

Output speed and torque specifications are NOT listed at 100% efficiency. Maximum efficiencies have been applied to the torque and speed charts according to the manufacturer's recommendations. Speed and torque output are dependent on the overall system efficiencies associated with the prime movers hydraulic system. When the purchaser is determining criteria for specific applications please contact Pengo. Pengo has made every attempt to present accurate and suitable information published in this document. This document should be used for information and comparative purposes only. When application-specific information is required, please contact Pengo.

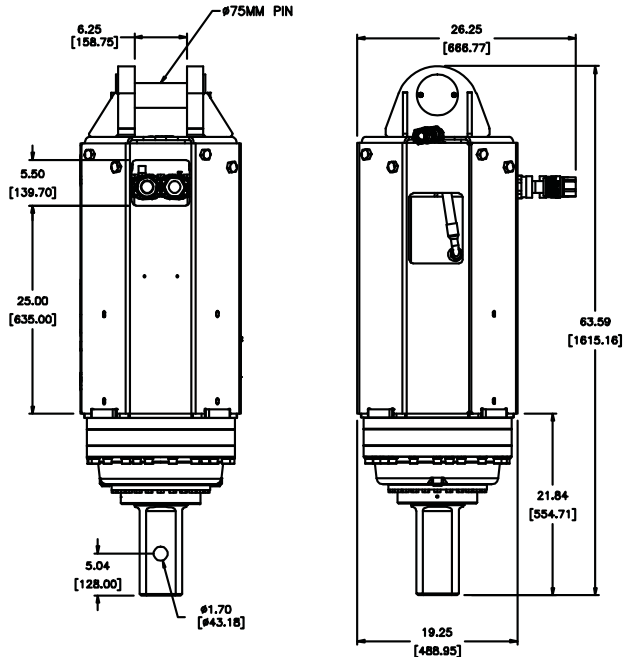


## DV-40 | VARIABLE SPEED

PART NO.	APPLICATION	CONNECTION	EXCAVATOR
610385	DRILLING	S-130mm	20T-30T

### ACCESSORIES

615001	TruLink Class 2 4" Monitor
615003	TruLink Class 2 8" Monitor
610202	Link Arm 75mm



<b>TOTAL UNIT WEIGHT</b>	1500 LBS / 680 Kg
<b>HYDRAULIC MOTOR INFORMATION</b>	
Displacement	10.06 cu/in (165cc)
Motor Type	Variable Speed Bi-Directional
Motor Output Shaft	1-1/4" Spline 13T
Motor Mount	SAE - D 2 Bolt
Motor Ports	Radial (Quick Coupler)
Cross Over Pressure Relief	None
<b>PLANETARY GEARBOX INFORMATION</b>	
Gearbox Type	Planetary Three Stage
Reduction Ratio	83.78:1
Output Shaft	130mm Square
Oil Capacity	3.7 Gallons
Oil Type	SAE 80W90 GL-5
Shaft Pull Out (lbs.)	60,000 lbs.

### VARIABLE SPEED MODELS MUST HAVE A Drain LINE.

Note: Revolution Drive units are not recommended for DTH and will not be covered under warranty for damage due to down the hole drilling.

Output speed and torque specifications are NOT listed at 100% efficiency. Maximum efficiencies have been applied to the torque and speed charts according to the manufacturer's recommendations. Speed and torque output are dependent on the overall system efficiencies associated with the prime movers hydraulic system. When the purchaser is determining criteria for specific applications please contact Pengo. Pengo has made every attempt to present accurate and suitable information published in this document. This document should be used for information and comparative purposes only. When application-specific information is required, please contact Pengo.

REFERENCE TORQUE CHART		
Pressure PSI (Bar)	High Torque (ft/lbs)	Low Torque (ft/lbs)
2600 (179)	24737	10194
2800 (193)	26640	10979
3000 (206)	28542	11762
3200 (220)	30445	12547
3400 (234)	32348	13331
3600 (248)	34251	14115
3800 (262)	36154	14900
4000 (275)	38056	15683

REFERENCE SPEED CHART		
Flow GPM (Liter)	Low Spd (rpm)	High Spd (rpm)
40 (150)	9	23
45 (169)	10	25
50 (188)	12	28
55 (206)	13	31
60 (225)	14	34

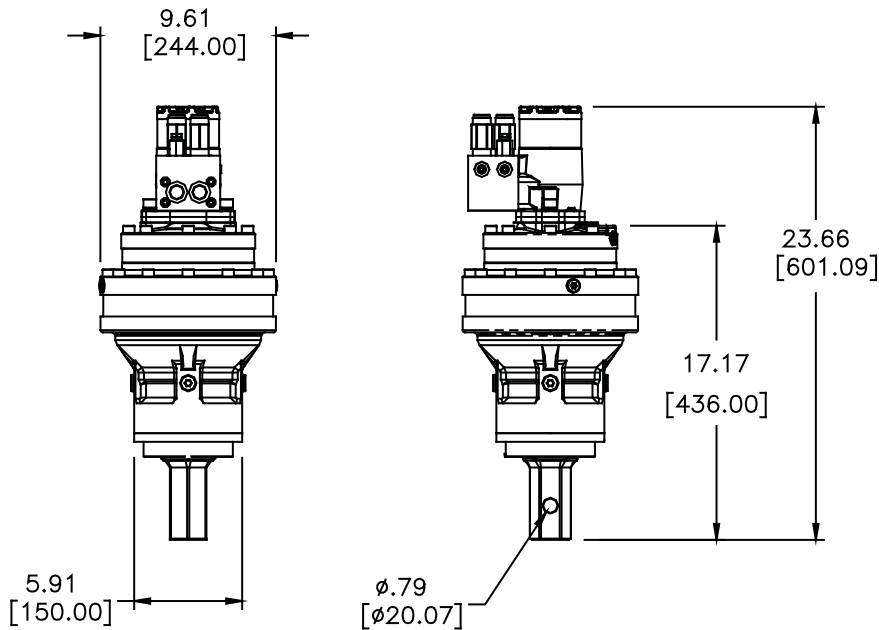


## RS-7X | SINGLE SPEED

PART NO.	APPLICATION	CONNECTION	EXCAVATOR
610206	ANCHOR	H-200	N/A

### ACCESSORIES

610288 Bail Assmby Kit (convert to RS-7)



TOTAL UNIT WEIGHT	120 LBS / 54 Kg
HYDRAULIC MOTOR INFORMATION	
Displacement	18.7 cu/in (306cc)
Motor Type	Single Speed
Motor Output Shaft	1" 6B Spline
Motor Mount	SAE - A 2 Bolt
Motor Ports	3/4" - 16 O-Ring
Cross Over Pressure Relief	Set @ 2700 psi
PLANETARY GEARBOX INFORMATION	
Gearbox Type	Planetary Two Stage
Reduction Ratio	14.79:1
Output Shaft	2" Hex
Oil Capacity	.87 Gallons
Oil Type	SAE 80W90 GL-5
Shaft Pull Out (lbs.)	7,000 lbs.

Note: Revolution Drive units are not recommended for DTH and will not be covered under warranty for damage due to down the hole drilling.

REFERENCE TORQUE CHART		
Pressure PSI (Bar)	Torque (ft/lbs)	
1000 (68)	3004	
1300 (89)	3906	
1500 (103)	4507	
1700 (117)	5108	
1900 (131)	5709	
2100 (144)	6310	
2300 (158)	6911	
2500 (172)	7512	

REFERENCE SPEED CHART		
Flow GPM (Liter)	Speed (rpm)	
10 (37)	7	
15 (56)	10	
20 (75)	14	
25 (94)	17	

Output speed and torque specifications are NOT listed at 100% efficiency. Maximum efficiencies have been applied to the torque and speed charts according to the manufacturer's recommendations. Speed and torque output are dependent on the overall system efficiencies associated with the prime movers hydraulic system. When the purchaser is determining criteria for specific applications please contact Pengo. Pengo has made every attempt to present accurate and suitable information published in this document. This document should be used for information and comparative purposes only. When application-specific information is required, please contact Pengo.

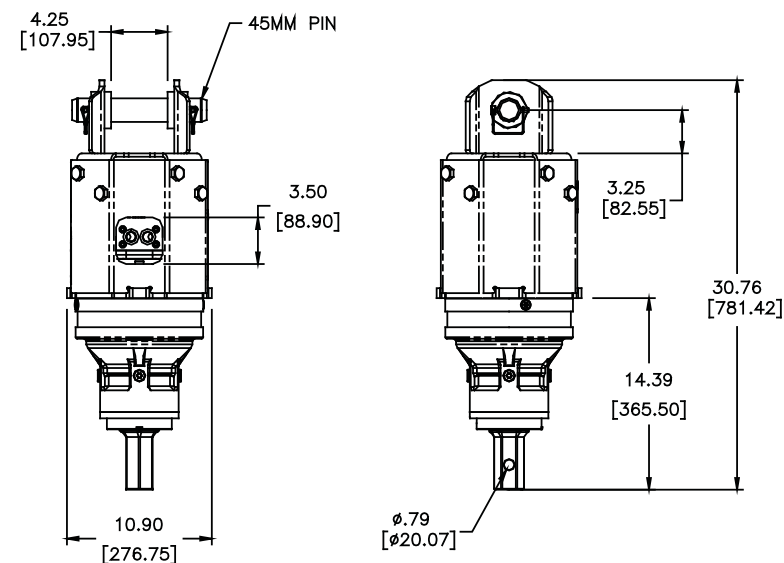


## RS-7 | SINGLE SPEED

PART NO.	APPLICATION	CONNECTION	EXCAVATOR
610207	ANCHOR	H-200	5T-8T

### ACCESSORIES

661111	Universal Mounting Plate for Skid-Steer
661318	Long Reach Universal Mount for Skid-Steer
615000	TruLink Class 1 4" Monitor
615002	TruLink Class 1 8" Monitor
660555	Link Arm 45mm
660558	Pin Assembly 45mm



TOTAL UNIT WEIGHT	170 LBS / 77 Kg
HYDRAULIC MOTOR INFORMATION	
Displacement	18.7 cu/in (306cc)
Motor Type	Single Speed
Motor Output Shaft	1" 6B Spline
Motor Mount	SAE - A 2 Bolt
Motor Ports	3/4" - 16 O-Ring
Cross Over Pressure Relief	Set @ 2700 psi
PLANETARY GEARBOX INFORMATION	
Gearbox Type	Planetary Two Stage
Reduction Ratio	14.79:1
Output Shaft	2" Hex
Oil Capacity	.87 Gallons
Oil Type	SAE 80W90 GL-5
Shaft Pull Out (lbs.)	7,000 lbs.

REFERENCE TORQUE CHART		
Pressure PSI (Bar)	Torque (ft/lbs)	
1000 (68)	3004	
1300 (89)	3906	
1500 (103)	4507	
1700 (117)	5108	
1900 (131)	5709	
2100 (144)	6310	
2300 (158)	6911	
2500 (172)	7512	

REFERENCE SPEED CHART		
Flow GPM (Liter)	Speed (rpm)	
10 (37)	7	
15 (56)	10	
20 (75)	14	
25 (94)	17	

Note: Revolution Drive units are not recommended for DTH and will not be covered under warranty for damage due to down the hole drilling.

Output speed and torque specifications are NOT listed at 100% efficiency. Maximum efficiencies have been applied to the torque and speed charts according to the manufacturer's recommendations. Speed and torque output are dependent on the overall system efficiencies associated with the prime movers hydraulic system. When the purchaser is determining criteria for specific applications please contact Pengo. Pengo has made every attempt to present accurate and suitable information published in this document. This document should be used for information and comparative purposes only. When application-specific information is required, please contact Pengo.

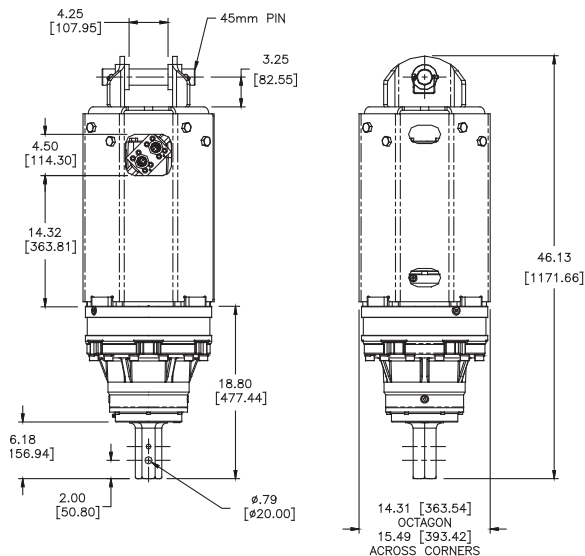


## RS-12 | SINGLE SPEED

PART NO.	APPLICATION	CONNECTION	EXCAVATOR
610057	ANCHOR	H-250	11T-17T

### ACCESSORIES

661111	Universal Mounting Plate for Skid-Steer
661318	Long Reach Universal Mount for Skid-Steer
615000	TruLink Class 1 4" Monitor
615002	TruLink Class 1 8" Monitor
660555	Link Arm 45mm
660558	Pin Assembly 45mm



TOTAL UNIT WEIGHT	546 LBS / 248 Kg
HYDRAULIC MOTOR INFORMATION	
Displacement	23.9 cu/in (390cc)
Motor Type	Single Speed Bi-Directional
Motor Output Shaft	1-1/2" Spline 17T
Motor Mount	SAE - C 4 Bolt
Motor Ports	1-1/16" - 12 O-Ring
Cross Over Pressure Relief	Set @ 3100 psi
PLANETARY GEARBOX INFORMATION	
Gearbox Type	Planetary Two Stage
Reduction Ratio	17.39:1
Output Shaft	2-1/2" Hex
Oil Capacity	1.7 Gallons
Oil Type	SAE 80W90 GL-5
Shaft Pull Out (lbs.)	22,500 lbs.

REFERENCE TORQUE CHART		
Pressure PSI (Bar)	Torque (ft/lbs)	
1600 (110)	6941	
1800 (124)	7808	
2000 (137)	8677	
2200 (151)	9544	
2400 (165)	10411	
2600 (179)	11280	
2800 (193)	12147	
3000 (206)	13014	

REFERENCE SPEED CHART		
Flow GPM (Liter)	Speed (rpm)	
15 (56)	7	
20 (75)	9	
25 (94)	11	
30 (113)	13	
35 (132)	15	
40 (151)	18	

Note: Revolution Drive units are not recommended for DTH and will not be covered under warranty for damage due to down the hole drilling.

Output speed and torque specifications are NOT listed at 100% efficiency. Maximum efficiencies have been applied to the torque and speed charts according to the manufacturer's recommendations. Speed and torque output are dependent on the overall system efficiencies associated with the prime movers hydraulic system. When the purchaser is determining criteria for specific applications please contact Pengo. Pengo has made every attempt to present accurate and suitable information published in this document. This document should be used for information and comparative purposes only. When application-specific information is required, please contact Pengo.

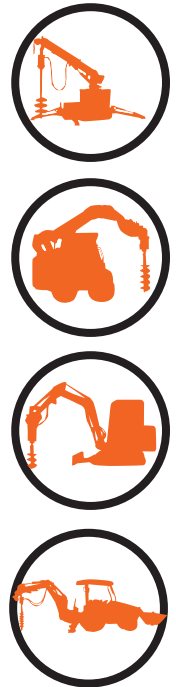
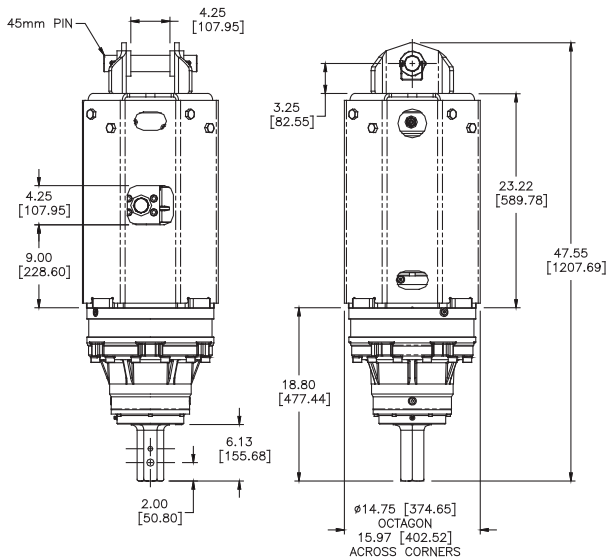


## RT-9 | TWO SPEED

PART NO.	APPLICATION	CONNECTION	EXCAVATOR
610058	ANCHOR	H-250	8T-13T

### ACCESSORIES

661111	Universal Mounting Plate for Skid-Steer
661318	Long Reach Universal Mount for Skid-Steer
615000	TruLink Class 1 4" Monitor
615002	TruLink Class 1 8" Monitor
660555	Link Arm 45mm
660558	Pin Assembly 45mm



TOTAL UNIT WEIGHT	540 LBS / 245 Kg
HYDRAULIC MOTOR INFORMATION	
Displacement	11.9 cu/in (195cc)
Motor Type	Two Speed Bi-Directional
Motor Output Shaft	1-1/4" Spline 14T
Motor Mount	SAE - C 4 Bolt
Motor Ports	1-5/8" - 12 UN-2B
Cross Over Pressure Relief	Set @ 3100 psi
PLANETARY GEARBOX INFORMATION	
Gearbox Type	Planetary Two Stage
Reduction Ratio	25.36:1
Output Shaft	2-1/2" Hex
Oil Capacity	1.7 Gallons
Oil Type	SAE 80W90 GL-5
Shaft Pull Out (lbs.)	22,500 lbs.

REFERENCE TORQUE CHART		
Pressure PSI (Bar)	High Torque (ft/lbs)	Low Torque (ft/lbs)
1600 (110)	5253	2626
1800 (124)	5910	2954
2000 (137)	6567	3283
2200 (151)	7223	3611
2400 (165)	7880	3940
2600 (179)	8536	4268
2800 (193)	9193	4596
3000 (206)	9850	4925

REFERENCE SPEED CHART		
Flow GPM (Liter)	Low Speed (rpm)	High Speed (rpm)
20 (75)	13	25
30 (113)	19	38
40 (151)	25	50
50 (190)	31	63

Note: Revolution Drive units are not recommended for DTH and will not be covered under warranty for damage due to down the hole drilling.

**TWO SPEED MODELS MUST HAVE A MINIMUM OF 20GPM.**

Output speed and torque specifications are NOT listed at 100% efficiency. Maximum efficiencies have been applied to the torque and speed charts according to the manufacturer's recommendations. Speed and torque output are dependent on the overall system efficiencies associated with the prime movers hydraulic system. When the purchaser is determining criteria for specific applications please contact Pengo. Pengo has made every attempt to present accurate and suitable information published in this document. This document should be used for information and comparative purposes only. When application-specific information is required, please contact Pengo.



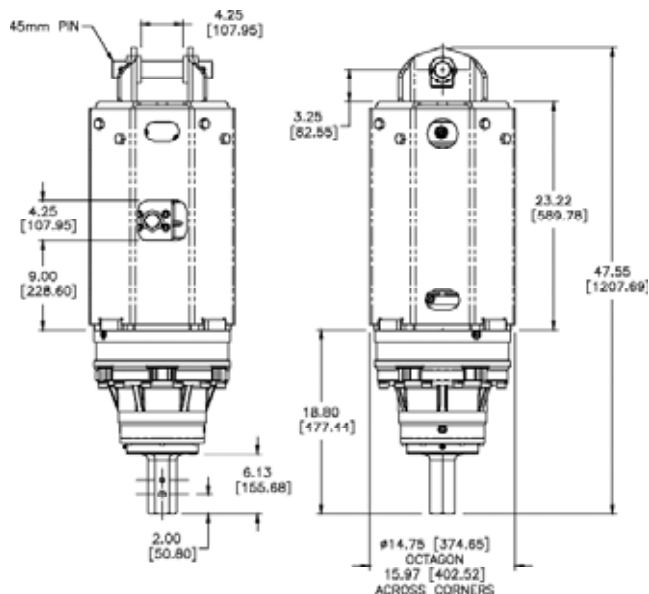


## RT-12 | TWO SPEED

PART NO.	APPLICATION	CONNECTION	EXCAVATOR
610059	ANCHOR	H-250	11T-17T

### ACCESSORIES

661111	Universal Mounting Plate for Skid-Steer
661318	Long Reach Universal Mount for Skid-Steer
615000	TruLink Class 1 4" Monitor
615002	TruLink Class 1 8" Monitor
660555	Link Arm 45mm
660558	Pin Assembly 45mm



TOTAL UNIT WEIGHT	655 LBS / 297 Kg
HYDRAULIC MOTOR INFORMATION	
Displacement	14.9 cu/in (244cc)
Motor Type	Two Speed Bi-Directional
Motor Output Shaft	1-1/4" Spline 14T
Motor Mount	SAE - C 4 Bolt
Motor Ports	1-5/8" - 12 UN-2B
Cross Over Pressure Relief	Set @ 3100 psi
PLANETARY GEARBOX INFORMATION	
Gearbox Type	Planetary Two Stage
Reduction Ratio	25.36:1
Output Shaft	2-1/2" Hex
Oil Capacity	1.8 Gallons
Oil Type	SAE 80W90 GL-5
Shaft Pull Out (lbs.)	22,500 lbs.

Note: Revolution Drive units are not recommended for DTH and will not be covered under warranty for damage due to down the hole drilling.

Output speed and torque specifications are NOT listed at 100% efficiency. Maximum efficiencies have been applied to the torque and speed charts according to the manufacturer's recommendations. Speed and torque output are dependent on the overall system efficiencies associated with the prime movers hydraulic system. When the purchaser is determining criteria for specific applications please contact Pengo. Pengo has made every attempt to present accurate and suitable information published in this document. This document should be used for information and comparative purposes only. When application-specific information is required, please contact Pengo.

REFERENCE TORQUE CHART		
Pressure PSI (Bar)	High Torque (ft/lbs)	Low Torque (ft/lbs)
1600 (110)	6576	3068
1800 (124)	7398	3451
2000 (137)	8220	3835
2200 (151)	9042	4219
2400 (165)	9864	4603
2600 (179)	10686	4986
2800 (193)	11508	5369
3000 (206)	12330	5753

REFERENCE SPEED CHART		
Flow GPM (Liter)	Low Speed (rpm)	High Speed (rpm)
20 (75)	10	21
30 (113)	15	32
40 (151)	20	43
50 (190)	25	54

**TWO SPEED MODELS MUST HAVE A MINIMUM OF 20GPM.**

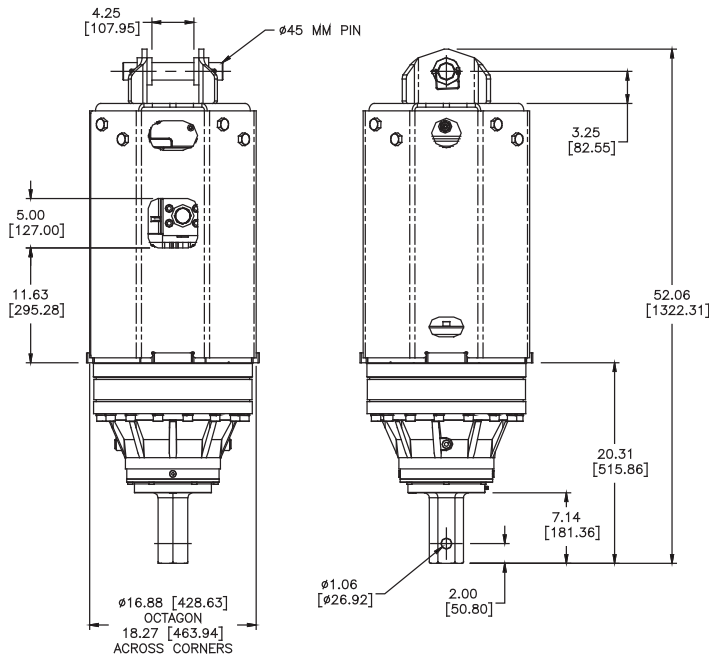


## RT-20 | TWO SPEED

PART NO.	APPLICATION	CONNECTION	EXCAVATOR
610060	ANCHOR	H-300	20T-30T

### ACCESSORIES

615000	TruLink Class 1 4" Monitor
615002	TruLink Class 1 8" Monitor
660555	Link Arm 45mm
660558	Pin Assembly 45mm



TOTAL UNIT WEIGHT	855 LBS / 387 Kg
HYDRAULIC MOTOR INFORMATION	
Displacement	11.9 cu/in (195cc)
Motor Type	Two Speed Bi-Directional
Motor Output Shaft	1-1/4" Spline 14T
Motor Mount	SAE - C 4 Bolt
Motor Ports	1-5/8" - 12 UN-2B
Cross Over Pressure Relief	Set @ 3100 psi
PLANETARY GEARBOX INFORMATION	
Gearbox Type	Planetary Three Stage
Reduction Ratio	60.56:1
Output Shaft	3" Hex
Oil Capacity	2.6 Gallons
Oil Type	SAE 80W90 GL-5
Shaft Pull Out (lbs.)	45,000 lbs.

REFERENCE TORQUE CHART		
Pressure PSI (Bar)	High Torque (ft/lbs)	Low Torque (ft/lbs)
1600 (110)	12086	6043
1800 (124)	13597	6798
2000 (137)	15108	7554
2200 (151)	16618	8309
2400 (165)	18129	9064
2600 (179)	19640	9820
2800 (193)	21151	10575
3000 (206)	22662	11331

REFERENCE SPEED CHART		
Flow GPM (Liter)	Low Speed (rpm)	High Speed (rpm)
20 (75)	5	10
30 (113)	8	15
40 (151)	10	20
50 (190)	13	25

Note: Revolution Drive units are not recommended for DTH and will not be covered under warranty for damage due to down the hole drilling.

Output speed and torque specifications are NOT listed at 100% efficiency. Maximum efficiencies have been applied to the torque and speed charts according to the manufacturer's recommendations. Speed and torque output are dependent on the overall system efficiencies associated with the prime movers hydraulic system. When the purchaser is determining criteria for specific applications please contact Pengo. Pengo has made every attempt to present accurate and suitable information published in this document. This document should be used for information and comparative purposes only. When application-specific information is required, please contact Pengo.

**TWO SPEED MODELS MUST HAVE A MINIMUM OF 20GPM.**

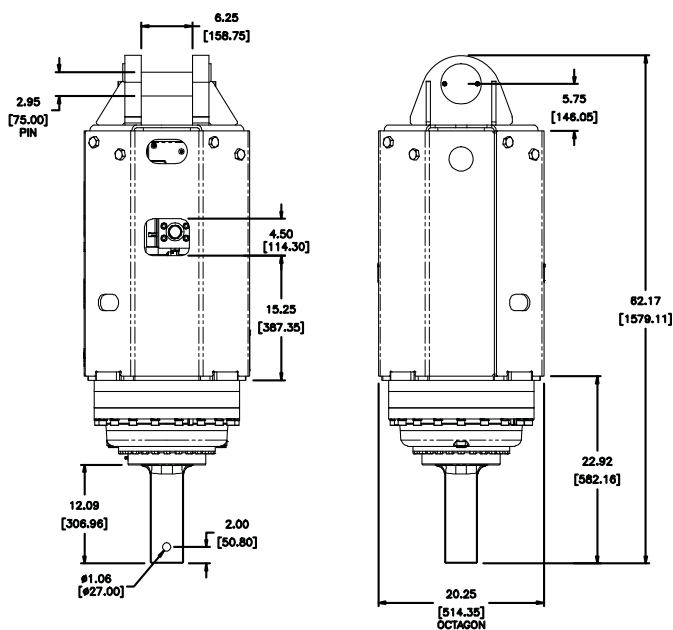


## RT-30 | TWO SPEED

PART NO.	APPLICATION	CONNECTION	EXCAVATOR
610061	ANCHOR	S-400	20T-30T

### ACCESSORIES

615001	TruLink Class 2 4" Monitor
615003	TruLink Class 2 8" Monitor
610202	Link Arm 75mm
660554	Pin Assembly 75mm



**AUTO  
SHIFT**

TOTAL UNIT WEIGHT	1220 LBS / 553 Kg
HYDRAULIC MOTOR INFORMATION	
Displacement	13.9 cu/in (227cc)
Motor Type	Two Speed Bi-Directional
Motor Output Shaft	1-1/4" Spline 14T
Motor Mount	SAE - C 4 Bolt
Motor Ports	1-5/8" - 12 UN-2B
Cross Over Pressure Relief	Set @ 3100 psi
PLANETARY GEARBOX INFORMATION	
Gearbox Type	Planetary Three Stage
Reduction Ratio	69.7:1
Output Shaft	4" Square
Oil Capacity	3.1 Gallons
Oil Type	SAE 80W90 GL-5
Shaft Pull Out (lbs.)	60,000 lbs.

REFERENCE TORQUE CHART		
Pressure PSI (Bar)	High Torque (ft/lbs)	Low Torque (ft/lbs)
1600 (110)	16250	8125
1800 (124)	18281	9140
2000 (137)	20312	10156
2200 (151)	22344	11171
2400 (165)	24375	12187
2600 (179)	26407	13203
2800 (193)	28438	14218
3000 (206)	30470	15234

REFERENCE SPEED CHART		
Flow GPM (Liter)	Low Speed (rpm)	High Speed (rpm)
20 (75)	4	8
30 (113)	6	11
40 (151)	8	15
50 (190)	9	19

Note: Revolution Drive units are not recommended for DTH and will not be covered under warranty for damage due to down the hole drilling.

Output speed and torque specifications are NOT listed at 100% efficiency. Maximum efficiencies have been applied to the torque and speed charts according to the manufacturer's recommendations. Speed and torque output are dependent on the overall system efficiencies associated with the prime movers hydraulic system. When the purchaser is determining criteria for specific applications please contact Pengo. Pengo has made every attempt to present accurate and suitable information published in this document. This document should be used for information and comparative purposes only. When application-specific information is required, please contact Pengo.

**TWO SPEED MODELS MUST HAVE A MINIMUM OF 20GPM.**

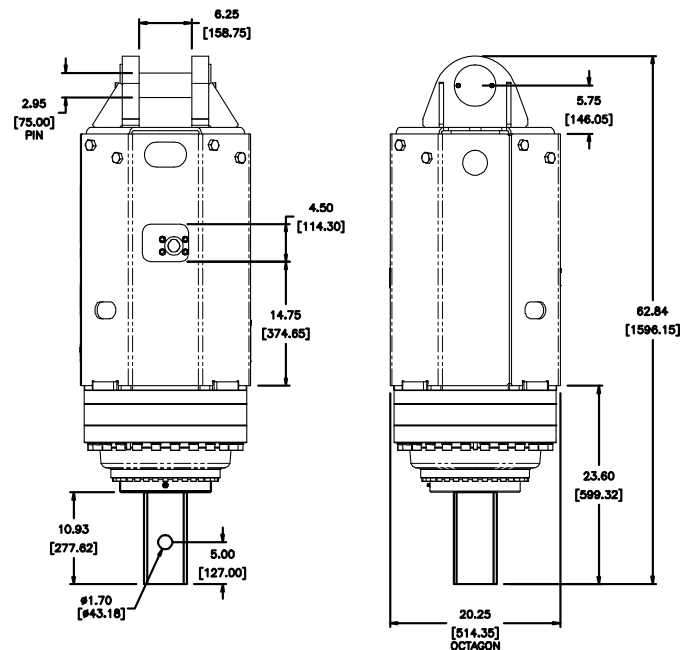


## RT-40 | TWO SPEED

PART NO.	APPLICATION	CONNECTION	EXCAVATOR
610480	ANCHOR	S-130mm	20T-30T

### ACCESSORIES

615001	TruLink Class 2 4" Monitor
615003	TruLink Class 2 8" Monitor
610202	Link Arm 75mm
660554	Pin Assembly 75mm



TOTAL UNIT WEIGHT	1440 LBS / 653 Kg
HYDRAULIC MOTOR INFORMATION	
Displacement	13.9 cu/in (227cc)
Motor Type	Two Speed Bi-Directional
Motor Output Shaft	1-1/4" Spline 14T
Motor Mount	SAE - C 4 Bolt
Motor Ports	1-5/8" - 12 UN-2B
Cross Over Pressure Relief	Set @ 3100 psi
PLANETARY GEARBOX INFORMATION	
Gearbox Type	Planetary Three Stage
Reduction Ratio	90.39:1
Output Shaft	130mm Square
Oil Capacity	3.7 Gallons
Oil Type	SAE 80W90 GL-5
Shaft Pull Out (lbs.)	60,000 lbs.

REFERENCE TORQUE CHART		
Pressure PSI (Bar)	High Torque (ft/lbs)	Low Torque (ft/lbs)
1600 (110)	21074	10537
1800 (124)	23708	11854
2000 (137)	26343	13171
2200 (151)	28976	14488
2400 (165)	31611	15806
2600 (179)	34245	17122
2800 (193)	36880	18439
3000 (206)	39514	19757

REFERENCE SPEED CHART		
Flow GPM (Liter)	Low Speed (rpm)	High Speed (rpm)
20 (75)	3	6
30 (113)	4	9
40 (151)	6	12
50 (190)	7	15

Note: Revolution Drive units are not recommended for DTH and will not be covered under warranty for damage due to down the hole drilling.

Output speed and torque specifications are NOT listed at 100% efficiency. Maximum efficiencies have been applied to the torque and speed charts according to the manufacturer's recommendations. Speed and torque output are dependent on the overall system efficiencies associated with the prime movers hydraulic system. When the purchaser is determining criteria for specific applications please contact Pengo. Pengo has made every attempt to present accurate and suitable information published in this document. This document should be used for information and comparative purposes only. When application-specific information is required, please contact Pengo.

**TWO SPEED MODELS MUST HAVE A MINIMUM OF 20GPM.**

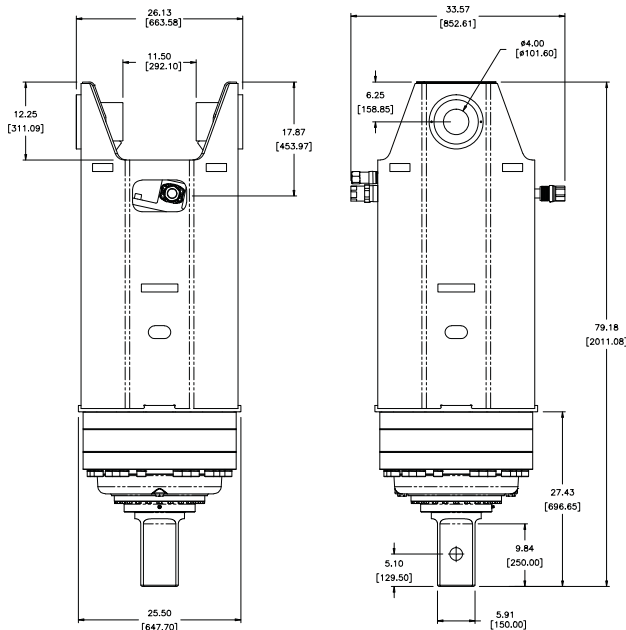


## RV-70 | VARIABLE SPEED

PART NO.	APPLICATION	CONNECTION	EXCAVATOR
610063	ANCHOR	S-150mm	30T-40T

### ACCESSORIES

615001	TruLink Class 2 4" Monitor
615003	TruLink Class 2 8" Monitor
615004	TruLink Class 3 8" Monitor (3.967" pin)
610202	Link Arm 75mm
660554	Pin Assembly 75mm



TOTAL UNIT WEIGHT	2850 LBS / 1292 Kg
HYDRAULIC MOTOR INFORMATION	
Displacement	13.73 cu/in (225cc)
Motor Type	Variable Speed Bi-Directional
Motor Output Shaft	13T 8/16 DP Spline
Motor Mount	SAE - D 4 Bolt
Motor Ports	Code 62 SAE Split Flange
Cross Over Pressure Relief	Not Equipped
PLANETARY GEARBOX INFORMATION	
Gearbox Type	Planetary Three Stage
Reduction Ratio	126:1
Output Shaft	150mm Square
Oil Capacity	9.2 Gallons
Oil Type	SAE 80W90 GL-5
Shaft Pull Out (lbs.)	100,000 lbs.

REFERENCE TORQUE CHART		
Pressure PSI (Bar)	High Torque (ft/lbs)	Low Torque (ft/lbs)
2800 (193)	55301	27638
2900 (200)	57276	28625
3000 (206)	59251	29612
3100 (213)	61226	30599
3200 (220)	63201	31586
3300 (227)	65176	32573
3400 (234)	67151	33560
3500 (241)	69126	34547

REFERENCE SPEED CHART		
Flow GPM (Liter)	Low Speed (rpm)	High Speed (rpm)
70 (262)	8	16
90 (337)	10	21
110 (412)	12	24
130 (487)	14	29
150 (562)	17	33

### VARIABLE SPEED MODELS MUST HAVE A Drain LINE.

Note: Revolution Drive units are not recommended for DTH and will not be covered under warranty for damage due to down the hole drilling.

Output speed and torque specifications are NOT listed at 100% efficiency. Maximum efficiencies have been applied to the torque and speed charts according to the manufacturer's recommendations. Speed and torque output are dependent on the overall system efficiencies associated with the prime movers hydraulic system. When the purchaser is determining criteria for specific applications please contact Pengo. Pengo has made every attempt to present accurate and suitable information published in this document. This document should be used for information and comparative purposes only. When application-specific information is required, please contact Pengo.

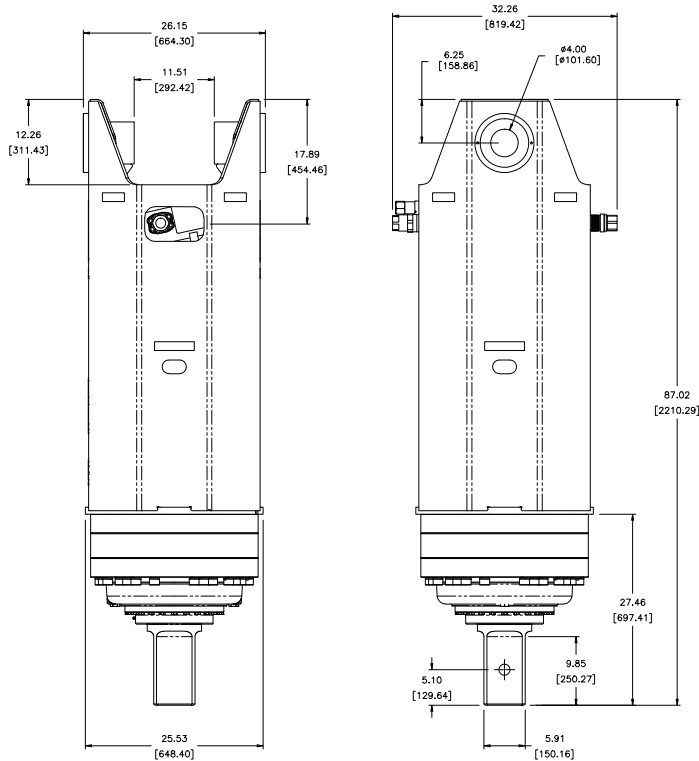


## RV-100 | VARIABLE SPEED

PART NO.	APPLICATION	CONNECTION	EXCAVATOR
610064	ANCHOR	S-177mm	60T-90T

### ACCESSORIES

615004 TruLink Class 3 8" Monitor



TOTAL UNIT WEIGHT	3800 LBS / 1724 Kg
HYDRAULIC MOTOR INFORMATION	
Displacement	13.73 cu/in (225cc)
Motor Type	Variable Speed Bi-Directional
Motor Output Shaft	13T 8/16 DP Spline
Motor Mount	SAE - D 4 Bolt
Motor Ports	Code 62 SAE Split Flange
Cross Over Pressure Relief	Not Equipped
PLANETARY GEARBOX INFORMATION	
Gearbox Type	Planetary Four Stage
Reduction Ratio	208.54:1
Output Shaft	177mm Square
Oil Capacity	11.0 Gallons
Oil Type	SAE 80W90 GL-5
Shaft Pull Out (lbs.)	180,000 lbs.

REFERENCE TORQUE CHART		
Pressure PSI (Bar)	High Torque (ft/lbs)	Low Torque (ft/lbs)
2800 (193)	88334	44167
2900 (200)	91489	45744
3000 (206)	94644	47322
3100 (213)	97799	48899
3200 (220)	100954	50477
3300 (227)	104108	52054
3400 (234)	107263	53631
3500 (241)	110418	55209

REFERENCE SPEED CHART		
Flow GPM (Liter)	Low Speed (rpm)	High Speed (rpm)
70 (262)	5	9
90 (337)	6	12
110 (412)	7	15
130 (487)	9	17
150 (562)	10	20

### VARIABLE SPEED MODELS MUST HAVE A Drain LINE.

Note: Revolution Drive units are not recommended for DTH and will not be covered under warranty for damage due to down the hole drilling.

Output speed and torque specifications are NOT listed at 100% efficiency. Maximum efficiencies have been applied to the torque and speed charts according to the manufacturer's recommendations. Speed and torque output are dependent on the overall system efficiencies associated with the prime movers hydraulic system. When the purchaser is determining criteria for specific applications please contact Penco. Penco has made every attempt to present accurate and suitable information published in this document. This document should be used for information and comparative purposes only. When application-specific information is required, please contact Penco.

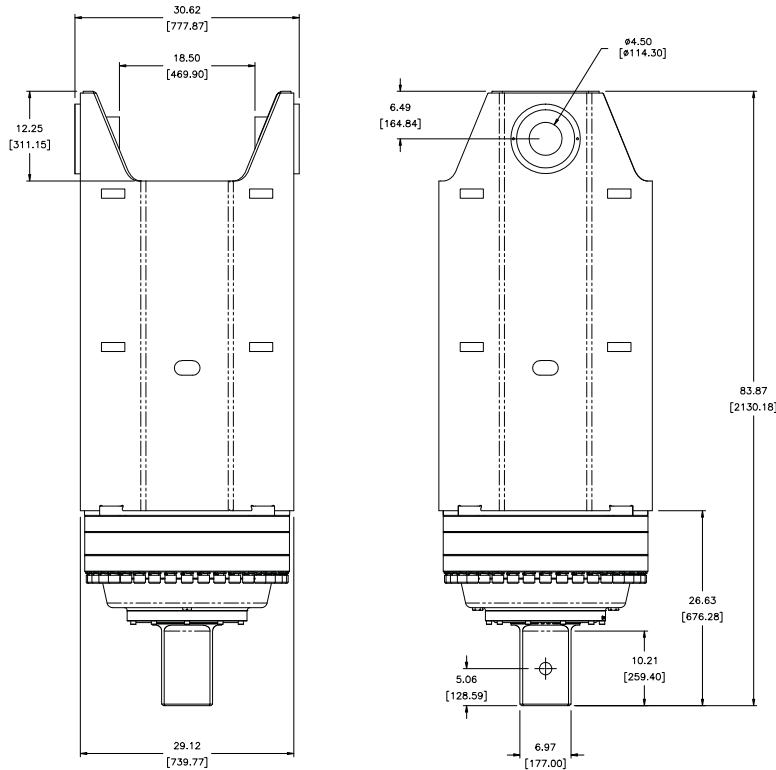


## RV-140 | VARIABLE SPEED

PART NO.	APPLICATION	CONNECTION	EXCAVATOR
610065	ANCHOR	S-177mm	90T-150T

### ACCESSORIES

615005 TruLink Class 4 8" Monitor



TOTAL UNIT WEIGHT	4000 LBS / 1814 Kg
HYDRAULIC MOTOR INFORMATION	
Displacement	13.73 cu/in (225cc)
Motor Type	Variable Speed Bi-Directional
Motor Output Shaft	13T 8/16 DP Spline
Motor Mount	SAE - D 4 Bolt
Motor Ports	Code 62 SAE Split Flange
Cross Over Pressure Relief	Not Equipped
PLANETARY GEARBOX INFORMATION	
Gearbox Type	Planetary Four Stage
Reduction Ratio	265.64:1
Output Shaft	177mm Square
Oil Capacity	11 Gallons
Oil Type	SAE 80W90 GL-5
Shaft Pull Out (lbs.)	250,000 lbs.

### VARIABLE SPEED MODELS MUST HAVE A Drain LINE.

Note: Revolution Drive units are not recommended for DTH and will not be covered under warranty for damage due to down the hole drilling.

Output speed and torque specifications are NOT listed at 100% efficiency. Maximum efficiencies have been applied to the torque and speed charts according to the manufacturer's recommendations. Speed and torque output are dependent on the overall system efficiencies associated with the prime movers hydraulic system. When the purchaser is determining criteria for specific applications please contact Penco. Penco has made every attempt to present accurate and suitable information published in this document. This document should be used for information and comparative purposes only. When application-specific information is required, please contact Penco.

REFERENCE TORQUE CHART		
Pressure PSI (Bar)	High Torque (ft/lbs)	Low Torque (ft/lbs)
2800 (193)	112521	56260
2900 (200)	116540	58270
3000 (206)	120559	60279
3100 (213)	124577	62288
3200 (220)	128596	64298
3300 (227)	132614	66307
3400 (234)	136633	68316
3500 (241)	140652	70326

REFERENCE SPEED CHART		
Flow GPM (Liter)	Low Speed (rpm)	High Speed (rpm)
70 (262)	4	7
90 (337)	5	9
110 (412)	6	12
130 (487)	7	14
150 (562)	8	16



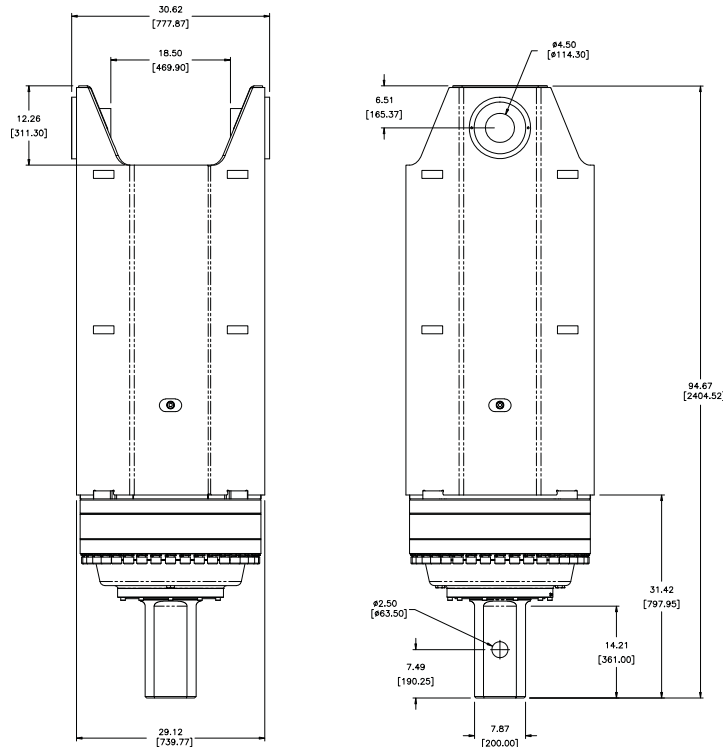
## RV-200 | VARIABLE SPEED



PART NO.	APPLICATION	CONNECTION	EXCAVATOR
610547	ANCHOR	S-200mm	90T-150T

### ACCESSORIES

615005 TruLink Class 4 8" Monitor



TOTAL UNIT WEIGHT	5000 LBS / 2267 Kg
HYDRAULIC MOTOR INFORMATION	
Displacement	13.73 cu/in (225cc)
Motor Type	Variable Speed Bi-Directional
Motor Output Shaft	13T 8/16 DP Spline
Motor Mount	SAE - D 4 Bolt
Motor Ports	Code 62 SAE Split Flange
Cross Over Pressure Relief	Not Equipped
PLANETARY GEARBOX INFORMATION	
Gearbox Type	Planetary Four Stage
Reduction Ratio	400:1
Output Shaft	200mm Square
Oil Capacity	16.25 Gallons
Oil Type	SAE 80W90 GL-5
Shaft Pull Out (lbs.)	300,000 lbs.

REFERENCE TORQUE CHART		
Pressure PSI (Bar)	High Torque (ft/lbs)	Low Torque (ft/lbs)
2800 (193)	169434	84717
2900 (200)	175486	87743
3000 (206)	181537	90768
3100 (213)	187588	93794
3200 (220)	193639	96819
3300 (227)	199691	99845
3400 (234)	205742	102871
3500 (241)	211793	105896

REFERENCE SPEED CHART		
Flow GPM (Liter)	Low Speed (rpm)	High Speed (rpm)
70 (262)	2	5
90 (337)	3	6
110 (412)	4	8
130 (487)	5	9
150 (562)	5	10

### VARIABLE SPEED MODELS MUST HAVE A DRAIN LINE.

Note: Revolution Drive units are not recommended for DTH and will not be covered under warranty for damage due to down the hole drilling.

Output speed and torque specifications are NOT listed at 100% efficiency. Maximum efficiencies have been applied to the torque and speed charts according to the manufacturer's recommendations. Speed and torque output are dependent on the overall system efficiencies associated with the prime movers hydraulic system. When the purchaser is determining criteria for specific applications please contact Pengo. Pengo has made every attempt to present accurate and suitable information published in this document. This document should be used for information and comparative purposes only. When application-specific information is required, please contact Pengo.





ACCESSORIES | LINK ARMS and PINS

ITEM DESCRIPTION	PART NO.
Link Arm 45mm (shown)	660555
Link Arm 75mm	610202
Pin Assembly 45mm (shown)	660558
Pin 75mm	660554



ACCESSORIES | FLANGE ADAPTERS

ITEM DESCRIPTION	PART NO.
H-250 Hex Flange Adapter	660947
H-300 Hex Flange Adapter	660949
S-400 Hex Flange Adapter	660951

ACCESSORIES | DRIVE TOOLS

DRIVE	SHAFT	PART NO.
DS-2	2" Hex	158136
DS-3	2" Hex	158136
DT-5	2 1/2" Hex	158132
DT-15	3" Hex	158137
RS-7X	2" Hex	158136
RS-7	2" Hex	158136
RS-12	2 1/2" Hex	158132
RT-9	2 1/2" Hex	158132

DRIVE	SHAFT	PART NO.
RT-12	2 1/2" Hex	158132
RT-20	3" Hex	158137
RT-30	4" Square	660951
RT-40	130mm Square	610301
RV-70	150mm Square	610302
RV-100	177mm Square	610303
RV-140	177mm Square	610303
RV-200	200mm Square	610304

FEATURES

- Converts RS-7X Planetary Drive to RS-7 Planetary Drive
- With bail kit and mount the RS-7X drive can be used with skid steer, also will work with mini excavator and mini digger derricks

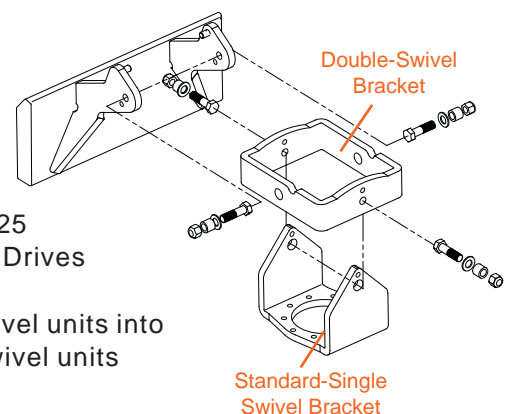


ACCESSORIES | RS-7X BAIL ASSEMBLY

ITEM DESCRIPTION	PART NO.
Bail Assembly Kit for RS-7	610288

FEATURES

- For Use with MS-100 and MS-125 Planetary Drives
- Convert single-swivel units into double-swivel units



ACCESSORIES | SWIVEL BRACKET

ITEM DESCRIPTION	PART NO.
Double Swivel Bracket	700215

*Information Disclaimer: Pengo has made every attempt to present accurate and suitable information published in this catalog. This catalog should be used for information and comparative purposes only. When application specific information is required, please contact Pengo at 1-800-599-0211. Pengo continually looks for new ways to improve its products. Therefore, Pengo reserves the right to make changes to our products and specifications without notice.*

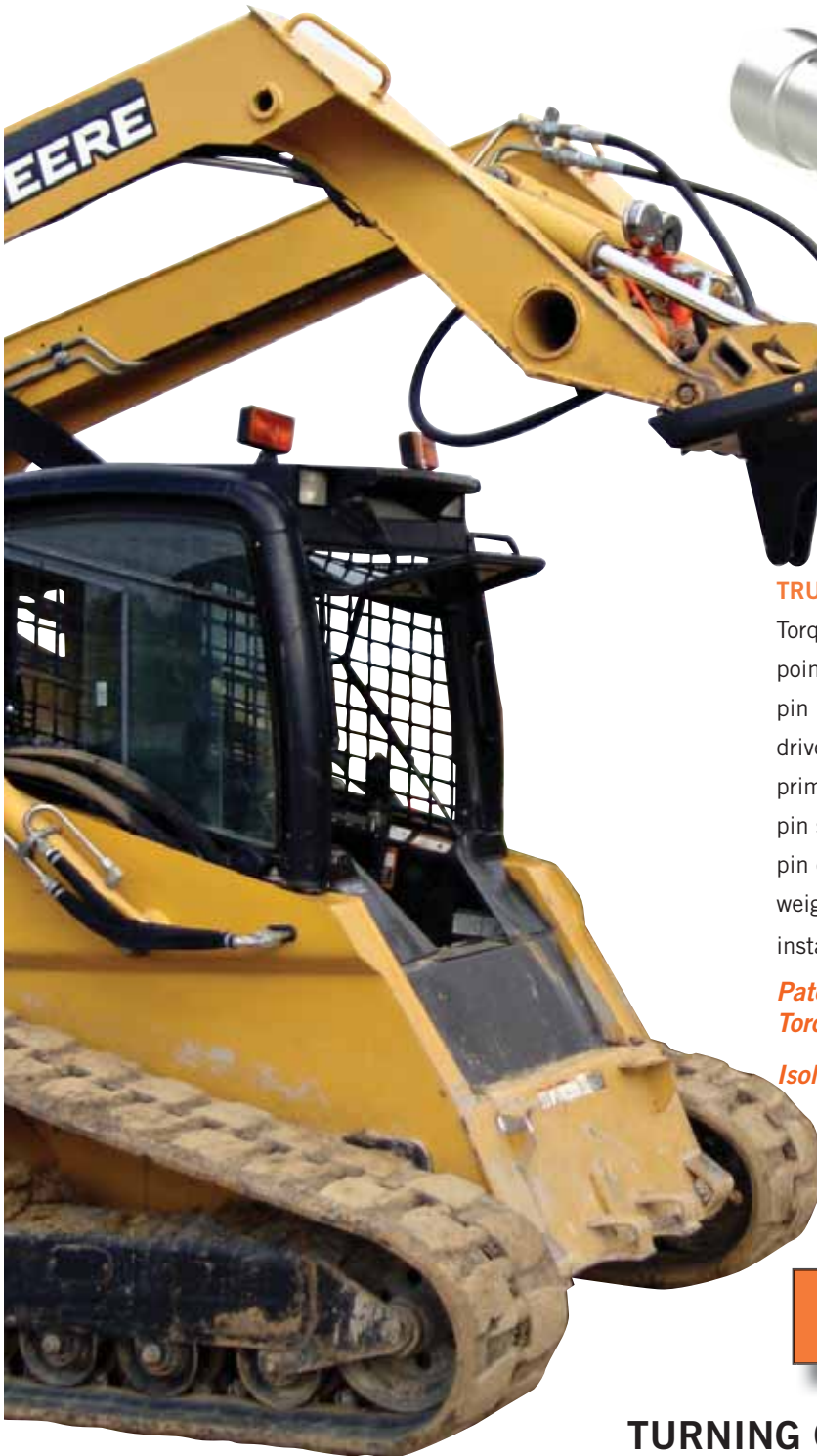


# TRULINK

TORQUE MONITOR™

We're Breaking New  
Ground with the All New  
TruLink Torque Monitor!

A revolutionary new approach  
to collecting installation data associated  
with helical pier projects.



**TRULINK™ PIN:**

Torque is measured at two points within the connection pin located between the anchor drive attachment and the prime mover. The TruLink™ pin simply replaces the OEM pin ensuring that no additional weight or height is added to the installation equipment.

*Patent Pending  
Torque Sensing Capability*

*Isolates Torque Values Only*

**Provides the Productivity and Accuracy  
You Deserve on the Jobsite!**

**TURNING CHALLENGES INTO SOLUTIONS!**



# TRULINK

TORQUE MONITOR™

The TruLink™ Torque Monitor system offers true torque readings that deliver a high degree of accuracy (+/- 2%) while providing the operator with real time data. TruLink™ records actual torque being applied to the helical pile, the installation angle and the depth. Unlike other torque monitoring systems available, TruLink isolates torque values only. Downward and side load forces are omitted ensuring the data is clean.



- Replaces Connection Pin
  - No Added Weight or Height or Loss of Stroke
- Built-in Inclinometer Allows Operator to Maintain a Consistent Angle of Insertion
- All Data is Recorded Within the Display
  - No Laptop Required to Extract Data
- Downward (perpendicular) Force is Omitted with Patent Pending Technology
  - Isolating Torque Values
- Strain Gage Technology
  - Not "Inferred" or Calculated as With Hydraulic Systems
- Hard Wired Connection
  - Eliminates Interference and Signal Issues Encountered with Wireless Systems
- Ability to Chart and Record Depth for Each Pile



- 4" or 8" Easy to Read, Touch Screen Display
- Displays Time/Date, Torque, Depth and Pile Number
- Easily Mounts Inside Operators Cab
- ip67 Display Housing
  - Rugged, Weatherproof and Shock-Resistant
- Simple Power Supply
  - Adapter uses Auxiliary Power Port, Cigarette Lighter

DESCRIPTION	Screen Size	Pin Dia.	Max Torq	PART NO.
TL4-C1	4"	45mm	22500 (ft/lb)	615000
TL4-C2	4"	75mm	69126 (ft/lb)	615001
TL8-C1	8"	45mm	22500 (ft/lb)	615002
TL8-C2	8"	75mm	69126 (ft/lb)	615003
TL8-C3	8"	3.967"	110418 (ft/lb)	615004
TL8-C4	8"	4.5"	211790 (ft/lb)	615005

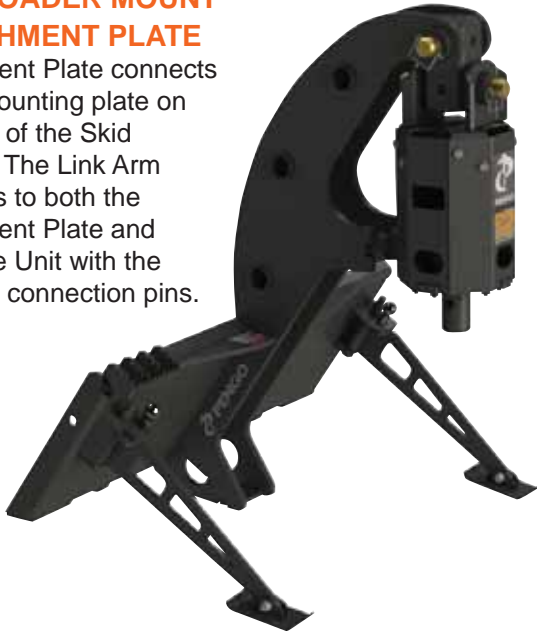


## DRIVE MOUNTS | Universal Skid Loader Mount

ITEM DESCRIPTION	PART NO.
Long Reach Universal Skid Mount	661318

### SKID LOADER MOUNT ATTACHMENT PLATE

Attachment Plate connects to the mounting plate on the front of the Skid Loader. The Link Arm connects to both the Attachment Plate and the Drive Unit with the supplied connection pins.



Mount shown with DS-2 Drive.

ITEM DESCRIPTION	PART NO.
Universal Skid Mount - Standard	661111

### SKID LOADER MOUNT ATTACHMENT PLATE

Attachment Plate connects to the mounting plate on the front of the Skid Loader. The Link Arm connects to both the Attachment Plate and the Drive Unit with the supplied connection pins.



Mount shown with DS-2 Drive.

## DRIVE MOUNTS | Backhoe Loader / Excavator Mount

ITEM DESCRIPTION	PART NO.
End of Boom Mount	Model Specific

### EXCAVATOR / BACKHOE END OF BOOM MOUNT

Mounting Bracket connects directly to the boom with the customer supplied connection pin. The Drive Unit connects to the Mounting Bracket with the supplied connection pin.



ITEM DESCRIPTION	PART NO.
Quick Coupler Mount	Model Specific

### EXCAVATOR / BACKHOE QUICK COUPLER MOUNT

Mounting Bracket connects to the quick coupler when the jaws of the quick coupler engage the pins on the Mounting Bracket. The Link Arm connects to both the Mounting Bracket and the Drive Unit with the supplied connection pins.





## DRIVE MOUNTS | Examples

### Skid Loader Mounting System

- o Provides maximum ground clearance of 7' to 11' depending model selected.
- o Increases height capability so drillers can use longer auger bits and anchor installers can use longer sections.
- o Unique design optimizes the operators visibility by positioning the Drive up to 48" from the front of the skid loader.
- o Standard retractable stabilizer arms allow the Drive attachment to stand upright when not in use. Improves ability to store, transport and attach to the skid loader.
- o Designed to be used with up to a 12,000 ft/lb Drive.



Long reach skid mount used to install helical anchors.



Excavator quick coupler mount used with DT-15 Drive and auger.

### Excavator Mounting System

- o Complete mounting system for all sizes of excavators.
- o Mounts can mount directly to the boom or be designed to work with an existing quick coupler.
- o Excavator mounts allow for maximum movement to ensure the Drive always hangs true to the ground.
- o Custom mounts can be designed for specific applications.
- o Mounts are available for the entire range of Drives offered by PENGO.

**REVOLUTION**  
SERIES™



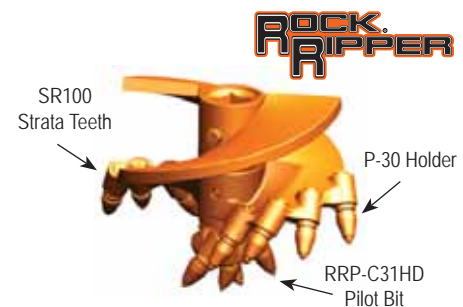
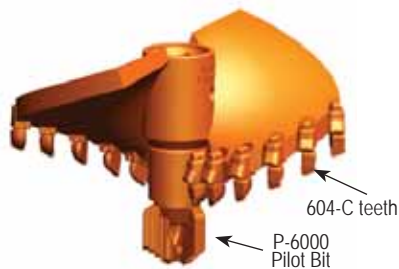
## EXCAVATOR AUGERS | Quick Change System

### FLIGHT BODIES | 5', 10' or 20'

DESC.	DIA.	5' P/N	10' P/N	20' P/N
FEX-16	16	165442	165450	165451
FEX-18	18	165443	165452	165453
FEX-20	20	165444	165454	165455
FEX-24	24	165445	165456	165457
FEX-30	30	165446	165458	165459
FEX-36	36	165447	165460	165461
FEX-42	42	165448	165462	165463
FEX-48	48	165449	165464	165465



**No need to carry two augers, use one Quick Change flight body with multiple interchangeable heads.**



### OPTION 1 | Carbide & Dirt Heads

DESC.	DIRT P/N	CARBIDE P/N
POEXDH-16	165470	165471
POEXDH-18	165472	165473
POEXDH-20	165474	165475
POEXDH-24	165476	165477
POEXDH-30	165478	165479
POEXDH-36	165480	165481
POEXDH-42	165482	165483
POEXDH-48	165484	165485

### OPTION 2 | Spiral Rock Heads

DESC.	PART NO.
POEXSRH-16	165490
POEXSRH-18	165492
POEXSRH-20	165494
POEXSRH-24	165496
POEXSRH-30	165498
POEXSRH-36	165500
POEXSRH-42	165502
POEXSRH-48	165504

### OPTION 3 | Rock Ripper® Heads

DESC.	PART NO.
POEXRRH-16	165510
POEXRRH-18	165512
POEXRRH-20	165514
POEXRRH-24	165516
POEXRRH-30	165518
POEXRRH-36	165520
POEXRRH-42	165522
POEXRRH-48	165524

### PARTS | Teeth & Holders

2070 Dirt Fas-N-Lok™	140000
1076 Carbide	140255
2077 Carbide Fas-N-Lok™	140003
2078 Carbide Gage	140004
2079 Carbide Fas-N-Lok™	140001
604-C Carbide Faced Tooth	140065
SR100 Strata Conical Tooth	850023
P30 Bullet Tooth Holder	990001
1604 Holder	157000

### PARTS | Pilot Bits and Holders

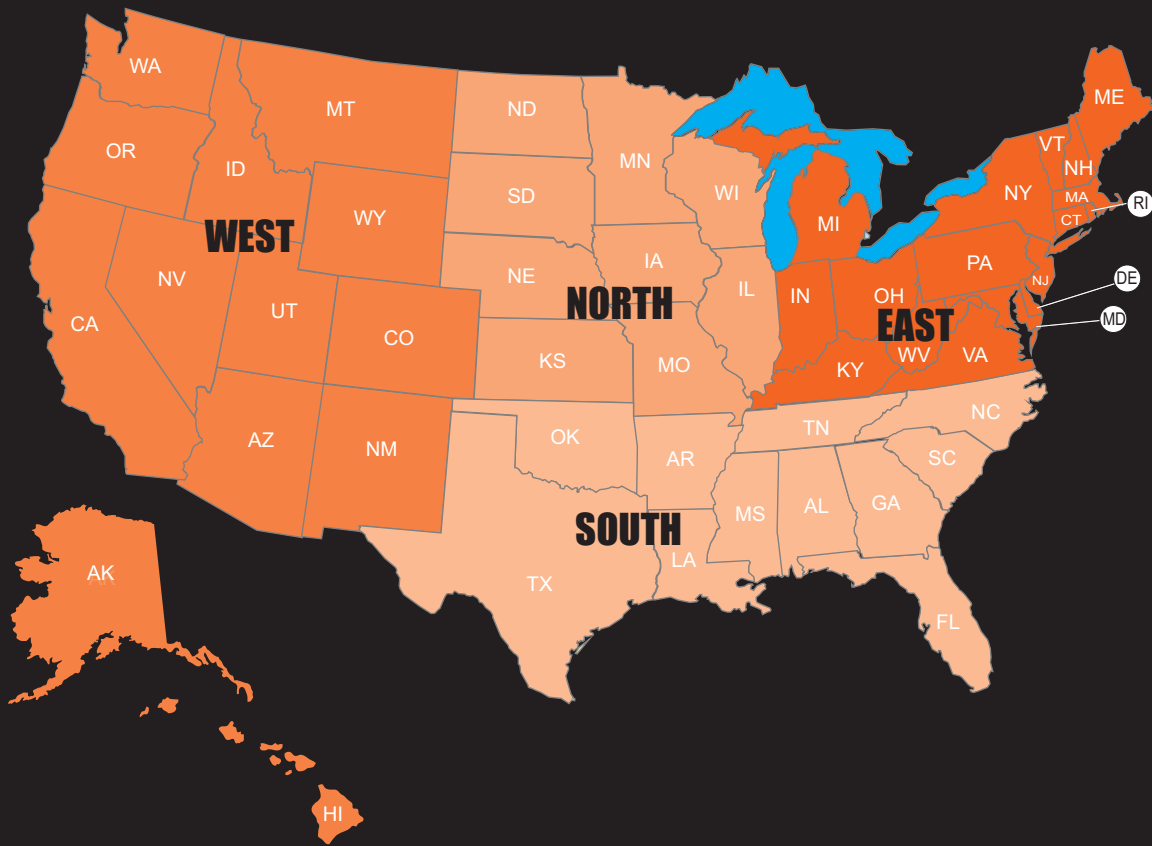
TF-1000 Triflow Pilot Bit	137345
P-6000 Carbide Pilot Bit	151275
C31HD Pilot Bit Assembly	135936

Pilot Bit Assemblies include, pilot, nuts, bolts and teeth if applicable.



Take Your Drilling to New Depths with STRATA Drilling Grade Carbide Teeth!

The improved grade of carbide in all STRATA teeth increases the life cycle of the tooth, meaning less down time and increased productivity!



### Pengo Drives Limited Warranty

NOTE: PENG0 Drives are not warranted for DTH applications. The DTH application will cause issues with the shaft and hydraulic motor.

All new PENG0 products are warranted to be free from defects in material and workmanship, which may cause failure under normal usage and service when used for the purpose intended.

PENG0 warrants its gearbox for a period of twenty-four (24) months and twelve (12) months on the Hydraulic Motor Dating from the delivery to the original user. The PENG0 warranty covers faulty workmanship and defective parts manufactured by PENG0. The warranty does not extend to transportation cost of parts nor does it cover consequential loss, damage to Hydraulic Hoses or ground engaging parts such as Sprockets, Digging Chain, Bearings and Teeth.

PENG0 Equipment must be operated in accordance with the recommended procedures and within the ranges as specified both on the Unit and contained in the Operating Manual.

Any claims under this warranty must be made within fourteen (14) days after the buyer learns of the facts upon which claim is based. ***All claims not made in writing and not received by PENG0 within the time specified above may be deemed waived. Serial Number must accompany all claims.***

Pengo will not be responsible for or accept any charges for work carried out by any repairs, or for any charges for any spare parts fitted to any PENG0 products without **written** approval from PENG0.

This warranty is void if field repairs have been made to the hydraulic motors, gearboxes, and controls without written approval. The complete unit must be available for inspection in its original but alleged failed condition.

PENG0'S liability for any and all losses and damages to buyer resulting from any cause whatsoever, including PENG0 negligence irrespective of whether such defects are discoverable or latent, shall in no event exceed the purchase price of the particular parts, with respect to which losses or damages are claimed, or, at the discretion of PENG0 the repair or replacement of defective or damaged parts.

Any goods returned to PENG0 by the customer under Warranty or repair must have all freight charges prepaid for on the customer's Account.

### Returns and Claims

1. Pengo reserves the right to determine whether products claimed to be defective shall be inspected by our personnel in the field or returned to the factory. If judged by Pengo to be defective in material or workmanship, the product will be replaced or a credit issued at the option of Pengo.
2. Upon notification of defect, Pengo's Inside Sales Department will issue a Return Goods Authorization number (RGA). All returns for replacement or credit **MUST** be accompanied by a RGA number. Products returned without a RGA number will be rejected and returned to the sender freight collect.
3. All returns must be shipped "prepaid". Products shipped "collect" will be refused. Proof of purchase such as invoice number must accompany returns.
4. Slow moving dealer inventory may be returned once per calendar year. The net value cannot exceed 5% of the previous year's purchases. A 20% re-stocking charge will apply to the net value of returned products. All returns must be of current manufacture and in un-used condition. Rusty or custom painted products will not be accepted for return.



Distributed By:



Website

Scan these QR codes with your smart phone and gain instant access to our web site or call us automatically.

Not familiar with QR codes? Simply go to [www.inigma.mobi](http://www.inigma.mobi) on your mobile device. I-nigma will automatically identify your smart phone and install the code reader.



Phone

PENGO  
500 EAST HIGHWAY 10  
LAURENS, IA 50554  
PH: 800.599.0211 OR 712.845.2540  
FX: 800.915.6904  
[WWW.PENGOATTACHMENTS.COM](http://WWW.PENGOATTACHMENTS.COM)  
[PENGOSALES@PENGOATTACHMENTS.COM](mailto:PENGOSALES@PENGOATTACHMENTS.COM)

© COPYRIGHT 2013 PENGO

Division of



INTERNATIONAL  
EQUIPMENT  
SOLUTIONS