



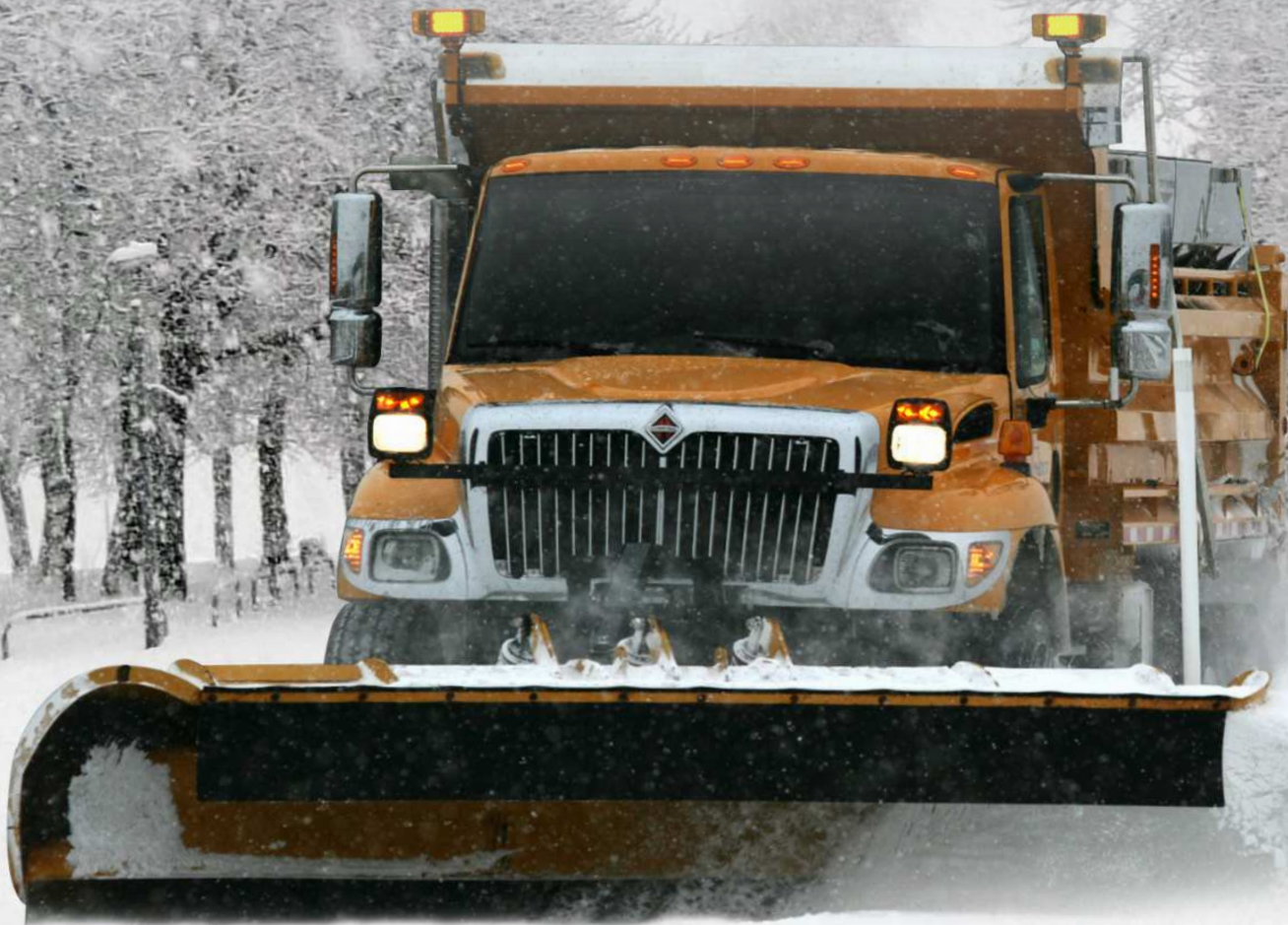
BLACK CAT
WEAR PARTS

SNOW PLOW PARTS

All Black Cat Snow Plow Parts are manufactured to offer the ultimate in wear resistance at the lowest possible cost. Parts are computer designed and field tested to offer the customer optimum protection in critical wear areas while assuring the easiest installation possible. Black Cat's standard offering of Snow plow accessories include Runner and Nose Shoes, Curb Guards and Edge Extenders.

Snow Plow blades are offered in a range of steel options to compliment any application. Tungsten Carbide is added in a variety of ways to increase the wear life of many parts by as much as 20 times over steel alone. Flexible manufacturing also allows Black Cat to offer customized solutions for any application.

If you have a plow with a Wear Problem, Black Cat has the solution!



735.0816

SNOW PLOW



www.BlackCatWearParts.com sales@blackcatwearparts.com Toll Free: 1.800.661.6666 Ph: 780.465.6666 Fax: 780.465.9595

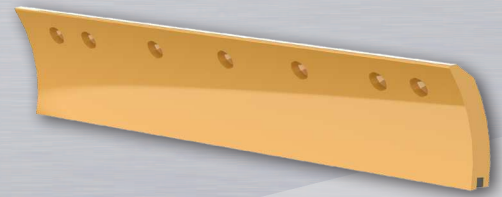
Caterpillar® and other identities and/or trademarks referred to in this publication are the registered marks of the entities noted herein. The use of any trademarks of others than Black Cat Blades Ltd. are solely and exclusively for identification, informational, comparative, and descriptive purposes. Black Cat Blades Ltd. is not affiliated with any owner of such registered marks and does not make, use, or sell any products manufactured by any such entity identified in this publication.

Tungsten Carbide Inserted Plow Blades

Black Cat Tungsten Carbide Inserted Plow Blades are manufactured using the best quality sintered virgin tungsten carbide inserts available. Carbide inserts are brazed into a milled slot in the wearing edge of the blade to extend the life of the blade.

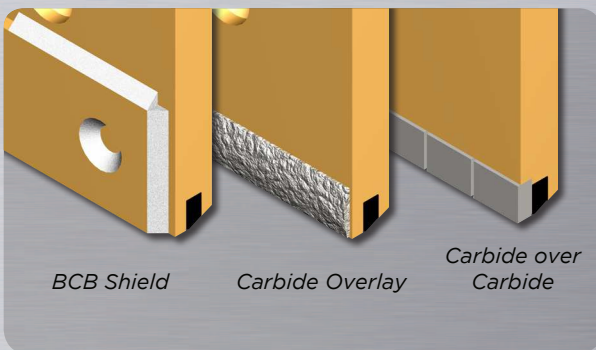
These carbide inserts are an extremely hard material that will resist wear by an estimated 20 times over steel blades. The steel blade is primarily the “holder” for the carbide inserts which alone are too fragile to be used for plowing roadways.

The different sizes and shapes of the inserted blade are designed to allow mounting in different configurations on the many different snow plows in use around the world.



Available Profiles	Weight per Foot
3/4" x 5"	12.75 lbs
3/4" x 6"	15.36 lbs
7/8" x 5"	14.86 lbs
7/8" x 6"	17.85 lbs
3/4" x 5" Curved	12.25 lbs
1" x 7" Curved	24.00 lbs

Tungsten Carbide Protection Options



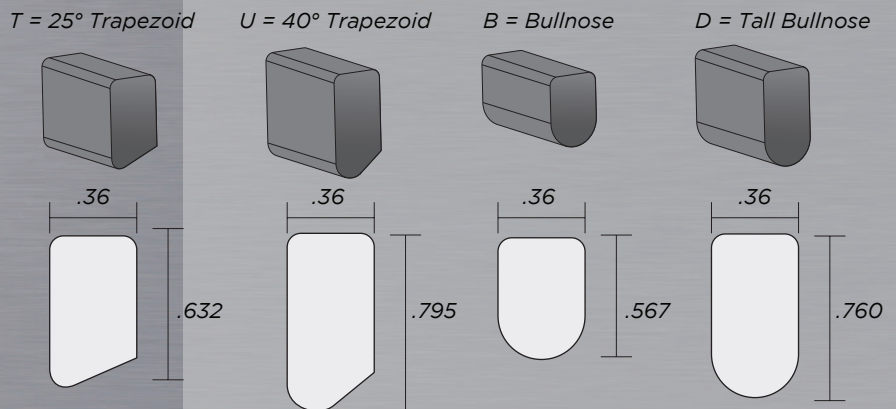
Tungsten Carbide is an extremely hard wear material that will resist abrasion very well. Because of this high hardness, the inserts are subject to fracturing in some applications. Several options are available to protect the carbide insert to prolong the life of the blade. The BCB Shield is applied to absorb shock and impact to help eliminate carbide fracturing. Carbide Overlay is applied to the face of the steel holder blade to harden the surface and keep the face from wearing too quickly in abrasive applications. Carbide Over Carbide is the ultimate in protection, an impact grade carbide tile is brazed in place over the high wear grade carbide insert to absorb shock and eliminate face wear.

Tungsten Carbide Inserts

Several carbide insert options are available to suit the many different applications and requirements.

The most popular insert in North America is the 25 degree trapezoid shape.

Some agencies specify larger inserts like the 40 degree trap. The size and shape of the insert is often specified by the requesting agency.



BCB500 High Alloy, High Abrasion Through Hardened Plow Blades

Available Profiles	Weight per Foot
1/2" x 6"	10.20 lbs
5/8" x 6"	12.72 lbs
3/4" x 6"	15.36 lbs
1" x 6"	20.38 lbs
5/8" x 8"	17.04 lbs
3/4" x 8"	20.40 lbs
1" x 8"	27.24 lbs

Black Cat BCB500 Plow Blades offer the user a high alloy steel blade which has been through hardened to increase the abrasion resistance and impact strength.

BCB500 Plow Blades are so tough they are warranted against breakage during their usable life! If these blades break before they are worn out, Black Cat will replace them (see Black Cat Blades Through Hardened Warranty for details).

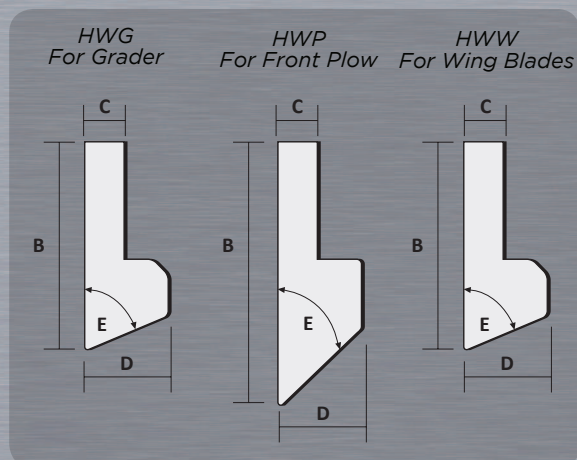
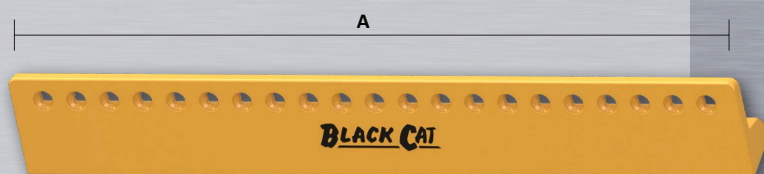
BCB300 High Carbon Plow Blades

Black Cat Snow Plow Blades are manufactured from the highest quality hot rolled steel bars available. The "Standard" in snow plow blades is the High Carbon alloy steel blade. The hardness and wear resistance in these products is obtained at the steel mill by adding elements to the molten steel, primarily Carbon. The "Carbon" plow blade is relatively simple, the differences being thickness, width, length, and mounting hole type, location and spacing. Mounting holes are traditionally square holes for carriage bolts but many users now use countersunk holes and plow bolts. Hole location on the blade requires determining the distance from the top of the blade to the center of the holes, referred to as the "Gauge", and the spacing of the holes (always measured center to center) across the length.

Available Profiles	Weight per Foot
3/8" x 6"	7.65 lbs
1/2" x 6"	10.20 lbs
5/8" x 6"	12.72 lbs
3/4" x 6"	15.36 lbs
1/2" x 8"	13.56 lbs
5/8" x 8"	17.04 lbs
3/4" x 8"	20.40 lbs
1" x 8"	27.24 lbs

BladeRunner Extended Wear Life Blades

BladeRunner Extended Wear Life Blades are Premium Alloy Steel blades designed to extend the wear life of the edge, reducing the need for blade changes. These high strength blades will bolt to virtually any snow plow or motor grader and are to be used where the customer requires longer blade life but tungsten carbide inserted blades are not practical. The BladeRunner will withstand impact and rough surfaces that would normally fracture carbide blades.



Part Number	Description	Weight	Holes	A	B	C	D	E	Hole Spacing			Bolt Hole Size
									End to 1	1 to 2	2 to 3	
HWW40	40" Wing Blade	88.6 lbs	19	39.88	6.00"	0.75"	2.69"	70.0°	1.94"	2.00"	2.00"	0.63"
HWW44	44" Wing Blade	98.1 lbs	21	43.88								
HWW48	48" Wing Blade	104.2 lbs	23	47.88								
HWG36	36" Grader Blade	83.9 lbs	7	35.88	6.00"	0.75"	2.69"	70.0°	2.94"	3.00"	6.00"	0.75"
HWG48	48" Grader Blade	108.7 lbs	9	47.88								
HWP36	36" Plow Blade	108.6 lbs	17	35.88	7.81"	0.75"	2.50"	50.0°	1.94"	2.00"	2.00"	0.63"
HWP40	40" Plow Blade	120.4 lbs	19	39.88								
HWP44	44" Plow Blade	132.1 lbs	21	43.88								
HWP48	48" Plow Blade	151.2 lbs	23	47.88								

Edge Extensors

Black Cat Edge Extensors are designed to bolt over the end section of steel or tungsten carbide inserted plow blades to guard the end of the plow and extend the life of the blades. The Extensor is designed with 2" hole spacing so it will bolt to virtually any plow and the holes are countersunk on both sides so it can be used on either end of the plow. Optional Tungsten Carbide overlays or inserts can be added to increase the wear life in critical areas.



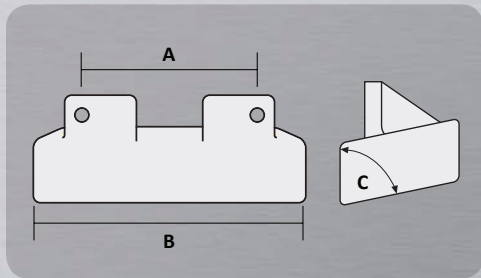
Part Number	Part Name	Weight
PGB8614	14" Edge Extensor	27.0 lbs
PGB8624	24" Edge Extensor	41.8 lbs

Curb Guards

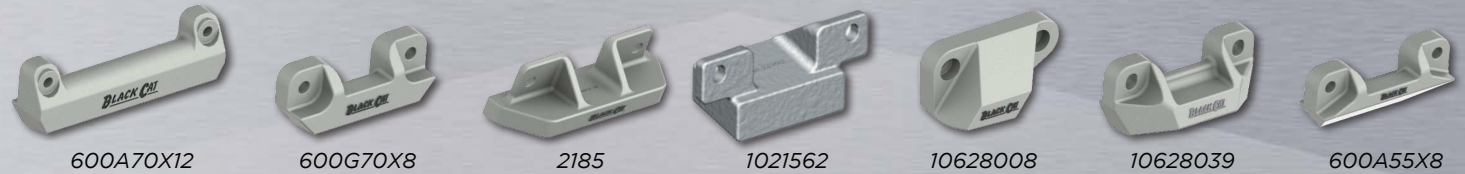


Part Number	Part Name	Weight
10620029	Universal Plow Curb Runner	14.2 lbs
6R1458	Grader Curb Runner (5/8 Bolts)	36.2 lbs
6R1434	Grader Curb Runner (3/4 Bolts)	37.3 lbs

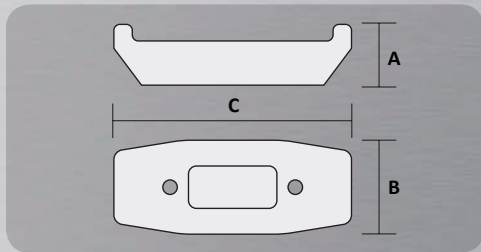
Moldboard Shoes



Part Number	Description	Material	Weight	A	B	C
1021562	Frink® Shoe	Grey Iron	14.8 lbs	8.00"	10.00"	75°
10628008	Tenco® Shoe	Grey Iron	32.2 lbs	8.00"	11.29"	45°
10628039	Tenco® Wing Shoe	Grey Iron	26.7 lbs	8.00"	10.50"	70/80°
600A55X8	Plow Shoe	Alloy Steel	16.9 lbs	8.00"	10.00"	50°
600G55X8	Plow Shoe	Grey Iron	16.6 lbs	8.00"	10.00"	50°
600G70X8	Wing Shoe	Grey Iron	20.4 lbs	8.00"	10.50"	70°
600A70X12	Wing Shoe	Alloy Steel	32.7 lbs	12.00"	14.00"	70°
2185	EDF® Plow Shoe	Grey Iron	21.3 lbs	8.00"	11.75"	70°
2185A	EDF® Plow Shoe	Alloy Steel	22.8 lbs	8.00"	9.75"	70°
301-13	Plow Shoe	Grey Iron	23.1 lbs	8.00"	12.75"	n/a
V4832	MTO Shoe	Grey Iron	28.8 lbs	8.00"	9.75"	72.9°



Plow Runners (Frame Shoes) & Holders



Part Number	Description	Material	Weight	A	B	C
605-42	Runner Shoe	Grey Iron	42.6 lbs	1.13"	7.00"	21.94"
605-A8	Runner Shoe	Alloy Steel	33.6 lbs	1.00"	8.00"	20.18"
605-7C16I	Runner Shoe	Carbide Inserted	30.5 lbs	0.88"	6.00"	20.18"
605-7C18I	Runner Shoe	Carbide Inserted	30.6 lbs	0.88"	6.00"	20.18"
605-7C24I	Runner Shoe	Carbide Inserted	30.8 lbs	0.88"	6.00"	20.18"
V8290	Adjuster Bar	Alloy Steel	8.2 lbs	n/a	n/a	n/a
V8291-75	Runner Holder	Alloy Steel	17.4 lbs	n/a	n/a	n/a
10MUSH	Mushroom Runner	Grey Iron	41.9 lbs	2.38"	12.00"	12.00"
10MUSH-13H	Runner Holder	Alloy Steel	9.7 lbs	n/a	n/a	n/a
10628003	Tenco® Runner	Grey Iron	21.3 lbs	2.38"	5.00"	11.00"



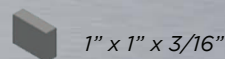
High Alloy Cast Plow Nose Shoes



Part Number	Description	Weight
10628028	Tenco® Nose Shoe	11.0 lbs
10	Viking® Nose Shoe	13.2 lbs
HWPNR-10	BladeRunner Viking® Nose Shoe	25.5 lbs
HWPNR-FRI	BladeRunner Frink® Nose Shoe	25.2 lbs
FRI 541R	Frink® Nose Shoe	13.5 lbs
FRI 541L	Frink® Nose Shoe	13.5 lbs

Carbide Runner Shoes and Noses

Tungsten Carbide Tiles or inserts can be added to any Alloy Steel Runner Shoes or Nose Pieces to increase the wear life in demanding applications.



www.BlackCatWearParts.com

www.BlackCatWearParts.com sales@blackcatwearparts.com Toll Free: 1.800.661.6666 Ph: 780.465.6666 Fax: 780.465.9595

Caterpillar® and other identities and/or trademarks referred to in this publication are the registered marks of the entities noted herein. The use of any trademarks of others than Black Cat Blades Ltd. are solely and exclusively for identification, informational, comparative, and descriptive purposes. Black Cat Blades Ltd. is not affiliated with any owner of such registered marks and does not make, use, or sell any products manufactured by any such entity identified in this publication.